

NOTICE!!

These documents have been scanned!

Do not place un-scanned documents beneath this notice!

Do not remove this notice from this file!

GPO Jacket No. 560-102
Print Order 61540
Rise Business Services, LLC
Job=AZ15 5/6/2019



Box Number= AZ15022



Claim Begin-End: AMC435083-AMC435088

1 Initial Receipt



AZ15022-19

AMC434518-AMC435476

AMCH	DATE CLOSED	REMARKS
435083		
435084		
435085		
435086		
435087		
435088		

United States Department of the Interior
Bureau of Land Management
LANDS/RECREATION & PLANNING
ONE N CENTRAL AVE
PHOENIX, AZ 85004 -2203
Phone: 602-417-9200

Receipt

No: 3434768

Transaction #: 3533926
Date of Transaction: 11/18/2015

CUSTOMER:

ROADRUNNER PROSPECTORS CLUB INC
PO BOX 56804
PHOENIX, AZ 85079-6804 US

LINE #	QTY	DESCRIPTION	REMARKS	UNIT PRICE	TOTAL
1	6.00	LOCATABLE MINERALS / MINING CLAIMS-NEW, UNADJUD, ONE OR MORE AUTH NOS / NEW MINING CLAIMS LOCATION FEE CASES: AMC435083/\$37.00, AMC435084/\$37.00, AMC435085/\$37.00, AMC435086/\$37.00, AMC435087/\$37.00, AMC435088/\$37.00		- n/a -	222.00
2	6.00	LOCATABLE MINERALS / MINING CLAIMS-NEW, UNADJUD, ONE OR MORE AUTH NOS / NEW MINING CLAIM PROCESSING FEE CASES: AMC435083/\$20.00, AMC435084/\$20.00, AMC435085/\$20.00, AMC435086/\$20.00, AMC435087/\$20.00, AMC435088/\$20.00		- n/a -	120.00
3	6.00	LOCATABLE MINERALS / MINING CLAIMS-NEW, UNADJUD, ONE OR MORE AUTH NOS / NEW MINING CLAIMS MAINTENANCE FEE CASES: AMC435083/\$155.00, AMC435084/\$155.00, AMC435085/\$155.00, AMC435086/\$155.00, AMC435087/\$155.00, AMC435088/\$155.00		- n/a -	930.00
TOTAL:					\$1,272.00

PAYMENT INFORMATION

1	AMOUNT:	1272.00	POSTMARKED:	N/A
	TYPE:	CHECK	RECEIVED:	11/18/2015
	CHECK NO:	8500		
	NAME:	ROADRUNNER PROSPECTORS CLUB INC PO BOX 56804 PHOENIX AZ 85079-6804 US		

REMARKS

This receipt was generated by the automated BLM Collections and Billing System and is a paper representation of a portion of the official electronic record contained therein.

NOTICE!!

These documents have been scanned!

Do not place un-scanned documents beneath this notice!

Do not remove this notice from this file!

GPO Jacket No. 560-102
Print Order 61540
Rise Business Services, LLC
Job=AZ15 5/6/2019



Box Number= AZ15022



Claim Begin-End: AMC435083-AMC435088

2 Correspondence



AZ15022-19

AMC434518-AMC435476

**NO
DOCUMENTS
FOUND**

NO DOCUMENTS FOUND
NO DOCUMENTS FOUND

NOTICE!!

These documents have been scanned!

Do not place un-scanned documents beneath this notice!

Do not remove this notice from this file!

GPO Jacket No. 560-102
Print Order 61540
Rise Business Services, LLC
Job=AZ15 5/6/2019



Box Number= AZ15022



Claim Begin-End: AMC435083-AMC435088

3 Transfers



AZ15022-19

AMC434518-AMC435476

**NO
DOCUMENTS
FOUND**

NO DOCUMENTS FOUND
NO DOCUMENTS FOUND

NOTICE!!

These documents have been scanned!

Do not place un-scanned documents beneath this notice!

Do not remove this notice from this file!

GPO Jacket No. 560-102
Print Order 61540
Rise Business Services, LLC
Job=AZ15 5/6/2019



Box Number= AZ15022



Claim Begin-End: AMC435083-AMC435088

4 Annual Filings



AZ15022-19

AMC434518-AMC435476

329013	247112	313473	29224	374511
339964	350275	130488	129334	365711
364688	331232	331455	157621	191670
64830	321061	329888	102389	348628
350903	314626	356380	126534	430611
251042	244561	95198	170911	328689
68526	196365	358378	11413	328593
433937	258455	358379	329388	371802
440315	446010	48976	364820	368415
326754	430534	254410	366267	366267
314304	411385	328742	427326	371350
364340	407030	74734	89414	96051
	327930	326311	300332	451088
	328302	291104	82212	362558
	374726	410363	142355	429664
	448723	406356	437448	435083
	450543	374274	329318	435561
	326311	326772	76950	126534

368415 374511
 366267 365711
 371350 191670
 348628
 430611
 328689

MAINTENANCE FEE PAYMENT

Claimant Name: Lead Runner Prospectors Club
 Address: PO Box 56804 / AGENT BOB
 City: PHX State: AZ Zip: 85079 HOVAD
 Telephone: 602-818-0825
 E-mail address: _____
 Signature: Bob Hoover

328593
 374802
 RECEIVED
 ARIZONA STATE OFFICE
 2018 AUG 22 P 2:27
 PHOENIX, ARIZONA
 BLM
 Date
 Stamp

Check here if this is a change of address.

LINE NO.	AMC NUMBER	CLAIM/SITE NAME	COUNTY RECORDER DATA (If available)	TWP	RNG	SEC
1	374511	CATREN LISA				
2		(SEE LIST)				
3						
4						
5						
6						
7						
8						
9						
10						

List additional claims on Form MCF114.

Bureau of Land Management
 Arizona State Office
www.blm.gov/az/

No. of Claims*: 283 x \$155 = 43865
 Check No: 9459 Init. PETZ
 Receipt No.: 424956
 For BLM Use Only

* \$155 per lode mining claim, mill site, or tunnel site; and \$155 for each 20 acres or portion thereof for each placer mining claim.

Form: MCF112
 Revised July 2014

This form is available from the Arizona Geological Survey and may be reproduced.

ENTERED
 AUG 28 2018
 RAM

RRPC Master Claims List as of September 1, 2018

\$ 43,865 <<Total Projected Maintenance Fee for 2018

272 << Total Claims

283 \$ 155.00 <Enter Current Rate

#	Map	AMC #	Claim Name	County	Cnty Recorder Data Record/Book Page	Township	Range	Section	Total Acres	20 Acre Segments	Maint. Fee	Lode /Placer	PNF Lands	Original 2012 Acres	Comments
1	1	374513	Caitlin Lisa	Yavapai	4452 917	12.5, 13N	1W	23,24,35,36	20.0	1	\$ 155	Placer	PNF	20	BLM corrected name to Caitlin Lisa
2	1	374512	Cole Ryan	Yavapai	2014-0056442	12.5N	1W	24	18.5	1	\$ 155	Placer	PNF	20	Amended south border to 1320 feet
3	1	365711	Diggems Paradise	Yavapai	3864391 4269 775	12.5N	1W	26	17.1	1	\$ 155	Placer	PNF	20	
4	1	191670	Roadrunner #1	Yavapai	1514 754	12.5N	1W	25	12.85	1	\$ 155	Placer	PNF	12.85	
5	1	191671	Roadrunner #2	Yavapai	1514 756	12.5N	1W	25	20	1	\$ 155	Placer	PNF	20	
6	1	348628	Vira Anne 1	Yavapai	2015-0008296	12.5N	1W	27	17.3	1	\$ 155	Placer	PNF	40	Amended north border to 1320 feet
7	1	430611	Vira Anne 2	Yavapai	2014-0008298	12.5N	1W	27	16.50	1	\$ 155	Placer	PNF	New	
8	2	328703	Ceedee #1	Yavapai	2746 703	8N	1W	5	20	1	\$ 155	Placer	PNF	20	
9	2	328593	Ceedee #2	Yavapai	2742 961	8N	1W	5	20	1	\$ 155	Placer	PNF	20	
10	2	328594	Ceedee #3	Yavapai	2742 963	8N	1W	5	20	1	\$ 155	Placer	PNF	20	
11	2	328595	Ceedee #4	Yavapai	2742 965	8N	1W	5	20	1	\$ 155	Placer	PNF	20	
12	2	328704	Ceedee #5	Yavapai	2746 705	8N	1W	5	20	1	\$ 155	Placer	PNF	20	
13	2	328597	Ceedee #7	Yavapai	2742 969	8N	1W	4	20	1	\$ 155	Placer	PNF	20	
14	2	328598	Ceedee #8	Yavapai	2742 971	8N	1W	4	20	1	\$ 155	Placer	PNF	20	
15	3	374511	Carolyn D	Yavapai	4444 69	13N	3W	29	20.0	1	\$ 155	Placer	PNF	20	
16	3	371802	Happy Times	Yavapai	4390 621	13N	3W	29, 32	20	1	\$ 155	Placer	PNF	20	
17	3	368415	Jacks Hideaway	Yavapai	4308 863	13N	3W	29	20	1	\$ 155	Placer	PNF	20	
18	3	366268	Renee's Best Chance	Yavapai	4281 507	13N	3W	32	20	1	\$ 155	Placer	PNF	20	
19	3	371803	Saddle Tramps	Yavapai	4390 622	13N	3W	29	20	1	\$ 155	Placer	PNF	20	
20	3	366270	Stuck Duck	Yavapai	4281 506	13N	3W	32	20	1	\$ 155	Placer	PNF	20	
21	3	371350	Wigers Wish	Yavapai	4372 442	13N	3W	32	20	1	\$ 155	Placer	PNF	20	
22	4	96051	JDR #1	Yavapai	1267 825	12.5N	2W	21	20	1	\$ 155	Placer	PNF	20	
23	4	96052	JDR #2	Yavapai	1267 827	12.5N	2W	21	20	1	\$ 155	Placer	PNF	20	
24	4	96053	JDR #3	Yavapai	1267 829	12.5N/13N	2W/2W	21/33	20	1	\$ 155	Placer	PNF	20	
25	5	451090	Chuck's Corner	Yavapai	2018-0022976	9.5 N	2E	28/29	20	1	\$ 155	Placer		New	May-18
26	5	328705	Genes Dream	Yavapai	2746 707	9.5N	2E	20, 21	20	1	\$ 155	Placer		20	
27	5	362558	Holly Marie	Yavapai	3769442 4190 312	9.5N	2E	20, 21	11.45	1	\$ 155	Placer		2.26	
28	5	429703	Janet Lynn 2-1	Yavapai	2014-0040485	10N	1E	12	20	1	\$ 155	Placer	PNF	New	
29	5	435087	Janet Lynn 2-2	Yavapai	2015-0052258	10N	1E	12, 13	15	1	\$ 155	Placer	PNF	New	
30	5	435088	Janet Lynn 2-3	Yavapai	2015-0052259	10N	1E	12, 13	15	1	\$ 155	Placer	PNF	New	
31	5	435569	Laura Kay 1-1	Yavapai	2015-0055540	10N	1E	12	20	1	\$ 155	Placer	PNF	New	
32	5	435570	Laura Kay 1-2	Yavapai	2015-0055541	10N	1E	12	20	1	\$ 155	Placer	PNF	New	
33	5	435571	Laura Kay 1-3	Yavapai	2015-0055542	10N	1E	12	20	1	\$ 155	Placer	PNF	New	
34	5	126538	Mandala 10	Yavapai	1371 343	10N	2E	31	20	1	\$ 155	Placer		20	
35	5	129334	Mandala 12	Yavapai	1376 706	10N	2E	30	20	1	\$ 155	Placer		27.95	Amended to 20 acres 08/14.
36	5	157621	Mandala 14	Yavapai	1437 981	10N	2E	30	20	1	\$ 155	Placer		20	
37	5	102389	Mandala 2 & 3	Yavapai	1293 289	10N	2E	30	20	1	\$ 155	Placer		40	
38	5	126535	Mandala 7	Yavapai	1371 337	10N	2E	30	20	1	\$ 155	Placer		20	
39	5	126536	Mandala 8	Yavapai	1371 339	10N	2E	30	20	1	\$ 155	Placer		20	
40	5	126537	Mandala 9	Yavapai	1371 341	10N	2E	30	20	1	\$ 155	Placer		20	
41	5	170911	Wednesday Hope #1	Yavapai	1467 691	10N	2E	31	20	1	\$ 155	Placer		20	
42	5	11413	Wednesday Hope #4	Yavapai	1015 726, 1799 33, 1569 374	9.5N/10N	2E/2E	20/32	20	1	\$ 155	Placer		20	
43	6	329388	Bad Luck	Yavapai	2780 912	12N	1W	14, 23	20	1	\$ 155	Placer	PNF	20	
44	6	235841	Betty #4	Yavapai	1713 778	12N	1W	14	20	1	\$ 155	Placer	PNF	20	
45	6	235842	Betty #5	Yavapai	1713 780	12N	1W	14	20	1	\$ 155	Placer	PNF	20	
46	6	174224	Big Rock #1	Yavapai	1469 76	12N	1W	10, 11	20	1	\$ 155	Placer	PNF	20	
47	6	174225	Big Rock #2	Yavapai	1469 78	12N	1W	10	20	1	\$ 155	Placer	PNF	20	
48	6	236096	Gary's Place #1A	Yavapai	1714 193	12N	1W	14	20	1	\$ 155	Placer	PNF	20	
49	6	329390	Good Luck	Yavapai	2780 916	12N	1W	23, 24	20	1	\$ 155	Placer	PNF	20	
50	6	329391	Great Luck	Yavapai	2780 918	12N	1W	24	20	1	\$ 155	Placer	PNF	20	
51	6	329389	No Luck	Yavapai	2780 914	12N	1W	23	20	1	\$ 155	Placer	PNF	20	
52	6	364821	Ray's Right Place	Yavapai	3837647 4247 553	12N	1W	24	17.0	1	\$ 155	Placer	PNF	40	BLM corrected their records to 17 acres
53	7	366267	Cobi's Gold	Yavapai	4281 505	11.5N	1E	19	20	1	\$ 155	Placer	PNF	20	
54	7	427326	Rexs' Place	Yavapai	4914 661	11.5N	1E	30	20	1	\$ 155	Placer	PNF	20	
55	7	366269	Rough Road	Yavapai	4281 503	11.5N	1E	30	20	1	\$ 155	Placer	PNF	20	
56	7	366271	Tegan's Bank	Yavapai	4281 504	11.5N	1E	30	20	1	\$ 155	Placer	PNF	20	
57	7	89420	Wolf #1	Yavapai	0961 673, 90 203541	11.5N	1E	31	20	1	\$ 155	Placer	PNF	20	Quit Claim Deed to RR is recorded in Maricopa County
58	7	89421	Wolf #2	Yavapai	0961 674, 2207 41	11.5N	1E	31	20	1	\$ 155	Placer	PNF	20	
59	7	89422	Wolf #3	Yavapai	0961 675, 2207 41	11.5N	1E	31	20	1	\$ 155	Placer	PNF	20	
60	7	89423	Wolf #4	Yavapai	0961 676, 2207 41	11 5N/11N	1E/1E	31/6	20	1	\$ 155	Placer	PNF	20	
61	7	300332	Wolf #5	Yavapai	2208 526	11.5N	1E	31	20	1	\$ 155	Placer	PNF	20	
62	7	300333	Wolf #6	Yavapai	2208 524	11N	1E	5, 6	20	1	\$ 155	Placer	PNF	20	
63	8	82213	Bean Bag #1	Yavapai	0965 338, 1252 276	12N	1W	28	20	1	\$ 155	Placer	PNF	20	1252 276 Added
64	8	435561	Bean Bag 2-1	Yavapai	2015-0055543	10N	2E	30	20	1	\$ 155	Placer	PNF	New	

RECEIVED
 MARICOPA STATE OFFICE
 2018 AUG 22 PM 2:21
 PHOENIX, ARIZONA

RRPC Master Claims List as of September 1, 2018

\$ 43,865 <<Total Projected Maintenance Fee for 2018

272 << Total Claims

283 \$ 155.00 <Enter Current Rate

#	Map	AMC #	Claim Name	County	Cnty Recorder Data Record/Book Page	Township	Range	Section	Total Acres	20 Acre Segments	Maint. Fee	Lode /Placer	PNF Lands	Original 2012 Acres	Comments
65	8	435562	Bean Bag 2-2	Yavapai	2015-0055544	10N	2E	30	20	1	\$ 155	Placer	PNF	New	
66	8	328605	Burro #1	Yavapai	2742 987	12N	1W	33	20	1	\$ 155	Placer	PNF	20	
67	8	328606	Burro #2	Yavapai	2742 985	11N	1W	4	20	1	\$ 155	Placer	PNF	20	
68	8	142356	Donkey Mine #4	Yavapai	1422 292	12N	1W	33	20	1	\$ 155	Lode	PNF	20	Filed as lode claim
69	8	437451	Goodwin 1-1	Yavapai	2016-0019094	12N	1W	28, 33	20	1	\$ 155	Placer	PNF	31.68	Amended to 20 acres March 2016
70	8	437452	Goodwin 1-2	Yavapai	2016-0019093	12N	1W	33	20	1	\$ 155	Placer	PNF		New filing, 10 acre - March 2016
71	8	329318	Mercer's Place	Yavapai	2777 216, 3288 700	11N	1W	4	20	1	\$ 155	Placer	PNF	20	
72	8	76951	Merciful Heavens #2	Yavapai	1329 344	12N/11N	1W/1W	33/4	20	1	\$ 155	Placer	PNF	20	BLM doesn't show 11N, 1W, 4
73	8	313473	Patriot 1	Yavapai	2347 704	11N	1W	4	20	1	\$ 155	Placer	PNF	20	
74	8	313474	Patriot 2	Yavapai	2347 706	11N	1W	3, 4	20	1	\$ 155	Placer	PNF	20	
75	8	313475	Patriot 3	Yavapai	2347 708	11N	1W	3	20	1	\$ 155	Placer	PNF	20	
76	8	313476	Patriot 4	Yavapai	2347 710	11N	1W	3	20	1	\$ 155	Placer	PNF	20	
77	8	313477	Patriot 5	Yavapai	2347 712	11N	1W	3	20	1	\$ 155	Placer	PNF	20	
78	8	130489	Protecto 2	Yavapai	1381 826	12N	1W	33	20	1	\$ 155	Lode	PNF	20	Filed as lode claim
79	9	329394	Bonny	Yavapai	2780 924	12N	1W	30	20	1	\$ 155	Placer	PNF	20	
80	9	331455	Chris #1	Yavapai	2919 631	12N	2W	36	20.0	1	\$ 155	Placer	PNF	20	
81	9	329392	Clinton	Yavapai	2780 920	12N/12N	1W/2W	30/25	20	1	\$ 155	Placer	PNF	20	
82	9	329393	Clyde	Yavapai	2780 922	12N/12N	1W/2W	30/25	20	1	\$ 155	Placer	PNF	20	
83	9	356382	Ducbill #1	Yavapai	27429 1402 63	12N	1W	17	20	1	\$ 155	Lode	PNF	20	Filed as lode claim
84	9	356383	Ducbill #2	Yavapai	27430 1402 65	12N	1W	17	20	1	\$ 155	Lode	PNF	20	Filed as lode claim
85	9	95198	Gold Palace I	Yavapai	1256 447	12N	1W	19	20	1	\$ 155	Placer	PNF	20	
86	9	95199	Gold Palace II	Yavapai	1256 450	12N	1W	19	20	1	\$ 155	Placer	PNF	20	
87	9	95200	Gold Palace III	Yavapai	1256 453	12N	1W	19	20	1	\$ 155	Placer	PNF	20	
88	9	95201	Gold Palace IV	Yavapai	1256 456	12N	1W	19	20	1	\$ 155	Placer	PNF	20	
89	9	95202	Gold Palace V	Yavapai	1256 459	12N	1W	19	20	1	\$ 155	Placer	PNF	20	
90	9	95203	Gold Palace VI	Yavapai	1256 462	12N	1W	19	20	1	\$ 155	Placer	PNF	20	BLM shows More Than Lots of Rock
91	9	95204	Gold Palace VII	Yavapai	1256 465	12N	1W	19	20	1	\$ 155	Placer	PNF	20	BLM shows Lots of Rock
92	9	95205	Gold Palace VIII	Yavapai	1256 468	12N	1W	30	20	1	\$ 155	Placer	PNF	20	
93	9	358378	Hidden Treasure	Yavapai	3633816 4076 796	12N/12N	1W/2W	30,31/25,36	20	1	\$ 155	Placer	PNF	20	
94	10	358379	Aquarius Ext. West #1	Yavapai	3633817 4076 797	10N	2E	18	20	1	\$ 155	Placer		20	
95	10	358380	Aquarius Ext. West #2	Yavapai	3633818 4076 798	10N	2E	18	20	1	\$ 155	Placer		20	
96	10	358381	Aquarius Ext. West #3	Yavapai	3633819 4076 799	10N	2E	18	20	1	\$ 155	Placer		20	
97	10	358382	Aquarius Ext. West #4	Yavapai	3633820 4076 800	10N	2E	18	20	1	\$ 155	Placer		20	
98	10	48976	Aquarius #1	Yavapai	0801 192 ***	10N	2E	7	20	1	\$ 155	Lode		20	Can not find Location Notice. Filed as lode claim
99	10	62606	Aquarius #2	Yavapai	1001 437	10N	2E	7	20	1	\$ 155	Placer		20	
100	10	48977	Aquarius #3	Yavapai	0801 194 ***	10N	2E	7, 18	20	1	\$ 155	Placer		20	Can not find Location Notice
101	10	435083	Aquarius Extension 1	Yavapai	2015-0052260	10N	2E	18	20	1	\$ 155	Placer		New	
102	10	435084	Aquarius Extension 2	Yavapai	2015-0052261	10N	2E	18	20	1	\$ 155	Placer		New	
103	10	435085	Aquarius Extension 3	Yavapai	2015-0052262	10N	2E	18	20	1	\$ 155	Placer		New	
104	10	435086	Aquarius Extension 4	Yavapai	2015-0052263	10N	2E	18	20	1	\$ 155	Placer		New	
105	11	254412	Hinny	Yavapai	4069 601, 1341 96, 1807 656	11N	1E	34	16.22	1	\$ 155	Placer	PNF	120	Amended to 16.22 acres 08/14. (Gulch Placer)
106	11	254410	Jackass	Yavapai	4069 605	11N	1E	34, 35	19.97	1	\$ 155	Placer	PNF	40	Amended to 19.97 acres 08/14.
107	11	254411	Jenny	Yavapai	4069 602	11N	1E	34	20	1	\$ 155	Placer	PNF	20	Revised with latest amended claim filing.
108	11	328742	Red Bird #11	Yavapai	2754 072	10N	1E	1	40	2	\$ 310	Placer	PNF	140	OK - 7 person association
109	11	74736	Sharon Lee #3	Yavapai	0912 399	10N	1E	2	20	1	\$ 155	Placer	PNF	160	
110	11	429736	Sharon Lee 1-1	Yavapai	2014-0040492	11N	1E	35, 36	20	1	\$ 155	Placer	PNF	New	
111	11	429737	Sharon Lee 1-2	Yavapai	2014-0040493	11N	1E	35, 36	20	1	\$ 155	Placer	PNF	New	
112	11	429738	Sharon Lee 1-3	Yavapai	2014-0040494	11N	1E	35, 36	20	1	\$ 155	Placer	PNF	New	
113	11	429739	Sharon Lee 1-4	Yavapai	2014-0040495	11N	1E	35, 36	20	1	\$ 155	Placer	PNF	New	
114	11	429740	Sharon Lee 2-1	Yavapai	2014-0040496	11N	1E	35	20	1	\$ 155	Placer	PNF	New	
115	11	429741	Sharon Lee 2-2	Yavapai	2014-0040497	11N	1E	35	20	1	\$ 155	Placer	PNF	New	
116	11	429742	Sharon Lee 2-3	Yavapai	2014-0040498	11N	1E	35	20	1	\$ 155	Placer	PNF	New	
117	11	429743	Sharon Lee 4-1	Yavapai	2014-0040499	10N	1E	1, 2	20	1	\$ 155	Placer	PNF	New	
118	11	429744	Sharon Lee 4-2	Yavapai	2014-0040500	10N	1E	1, 2	20	1	\$ 155	Placer	PNF	New	
119	11	429745	Sharon Lee 4-3	Yavapai	2014-0040501	10N	1E	1, 2	20	1	\$ 155	Placer	PNF	New	
120	11	429746	Sharon Lee 4-4	Yavapai	2014-0040502	10N	1E	1, 2	20	1	\$ 155	Placer	PNF	New	
121	11	429747	Sharon Lee 4-5	Yavapai	2014-0040503	10N	1E	1, 2	20	1	\$ 155	Placer	PNF	New	
122	11	429748	Sharon Lee 4-6	Yavapai	2014-0040504	10N	1E	1, 2	20	1	\$ 155	Placer	PNF	New	
123	12	326313	Carrie #3	Maricopa	93 0174160	7N	3W	30	20	1	\$ 155	Placer		20	
124	12	326314	Carrie #4	Maricopa	93 0174159	7N	3W	30	20	1	\$ 155	Placer		20	
125	12	437934	Carrie 1-1	Maricopa	2016-0242927	7N	3W	31	20	1	\$ 155	Placer		40	Amended to 20 acres March 2016
126	12	437449	Carrie 1-2	Maricopa	2016-0222160	7N	3W	31	20	1	\$ 155	Placer			New filing - March 2016
127	12	326312	Carrie 2-1	Maricopa	2016-0222161	7N	3W	31	20	1	\$ 155	Placer		40	Amended to 20 acres March 2016
128	12	437450	Carrie 2-2	Maricopa	2016-0222162	7N	3W	31	20	1	\$ 155	Placer			New filing - March 2016

RECEIVED
 PHOENIX, ARIZONA
 AUG 22 P 2:21
 STATE OFFICE

RRPC Master Claims List as of September 1, 2018

\$ 43,865 <<Total Projected Maintenance Fee for 2018

283 \$ 155.00 <Enter Current Rate

#	Map	AMC #	Claim Name	County	Cnty Recorder Data Record/Book Page	Township	Range	Section	Total Acres	20 Acre Segments	Maint. Fee	Lode /Placer	PNF Lands	Original 2012 Acres	Comments
129	12	291104	Cas #2	Maricopa	92 0366284, 88 598383	7N	3W	29	20	1	\$ 155	Placer		20	
130	12	410363	Cass # 10	Maricopa	11 0735632	7N	3W	29	20	1	\$ 155	Placer		20	
131	12	328698	Cass No. 4	Maricopa	93 0885578	7N	3W	29	20	1	\$ 155	Placer		20	
132	12	328699	Cass No. 5	Maricopa	93 0885577	7N	3W	29	20	1	\$ 155	Placer		20	
133	12	328700	Cass No. 6	Maricopa	93 0885576	7N	3W	29	20	1	\$ 155	Placer		20	
134	12	328701	Cass No. 7	Maricopa	93 0885575	7N	3W	29	20	1	\$ 155	Placer		20	
135	12	328702	Cass No. 8	Maricopa	93 0885574	7N	3W	29	20	1	\$ 155	Placer		20	
136	12	406356	Cass No. 9	Maricopa	11 0623988	7N	3W	29	20	1	\$ 155	Placer		20	
137	12	374275	Charles' Dream	Maricopa	06 1491112	7N	3W	20	20	1	\$ 155	Placer		20	
138	12	329800	Gypsy Moth 1	Maricopa	94 0218517	7N	3W	21	20	1	\$ 155	Placer		20	
139	12	329801	Gypsy Moth 2	Maricopa	94 0218518	7N	3W	21	20	1	\$ 155	Placer		20	
140	12	326325	Jake #3	Maricopa	93 0174145	7N	3W	29	20	1	\$ 155	Placer		40	Amended to 20 acres.
141	12	429695	Jake 1-1	Maricopa	2014-0584266	7N	3W	29	20	1	\$ 155	Placer		New	
142	12	429696	Jake 1-2	Maricopa	2014-0584267	7N	3W	29	20	1	\$ 155	Placer		New	
143	12	429697	Jake 1-3	Maricopa	2014-0584268	7N	3W	29	20	1	\$ 155	Placer		New	
144	12	429698	Jake 1-4	Maricopa	2014-0584269	7N	3W	29	20	1	\$ 155	Placer		New	
145	12	429699	Jake 2-1	Maricopa	2014-0584270	7N	3W	29	20	1	\$ 155	Placer		New	
146	12	429700	Jake 2-2	Maricopa	2014-0584271	7N	3W	29	20	1	\$ 155	Placer		New	
147	12	429701	Jake 2-3	Maricopa	2014-0584272	7N	3W	29	20	1	\$ 155	Placer		New	
148	12	429702	Jake 2-4	Maricopa	2014-0584273	7N	3W	29	20	1	\$ 155	Placer		New	
149	12	333426	La Siesta #1	Maricopa	95 0185054	7N	3W	30	20	1	\$ 155	Placer		20	
150	12	333427	La Siesta #3	Maricopa	95 0185055	7N	3W	30	20	1	\$ 155	Placer		20	
151	12	374274	Lori's Place	Maricopa	06 1491113	7N	3W	20	20	1	\$ 155	Placer		20	
152	12	326319	Pat	Maricopa	93 0174152	7N	3W	31	20	1	\$ 155	Placer		20	
153	12	326316	Pennyweight #2	Maricopa	93 0174156	7N	3W	29	20	1	\$ 155	Placer		40	Amended to 20 acres 08/14.
154	12	326315	Pennyweight 1-1	Maricopa	2016-0222163	7N	3W	29	20	1	\$ 155	Placer		40	Amended to 20 acres March 2016
155	12	437453	Pennyweight 1-2	Maricopa	2016-0222164	7N	3W	29	20	1	\$ 155	Placer			New filing - March 2016
156	12	326327	Pilgrim #1	Maricopa	93 0174153	7N	3W	31	20	1	\$ 155	Placer		20	
157	12	429724	Randy B 1	Maricopa	2014-0584262	7N	3W	30	20	1	\$ 155	Placer		New	
158	12	429725	Randy B 2	Maricopa	2014-0584263	7N	3W	30	20	1	\$ 155	Placer		New	
159	12	429726	Randy B 3	Maricopa	2014-0584264	7N	3W	30	20	1	\$ 155	Placer		New	
160	12	429727	Randy B 4	Maricopa	2014-0584265	7N	3W	30	20	1	\$ 155	Placer		New	
161	12	326772	Range Bull # 1	Maricopa	93 0362063	7N	3W	21	20	1	\$ 155	Placer		20	Actually 40 acres.
162	12	247112	Sando	Maricopa	85 0559653	7N	3W	28	20	1	\$ 155	Placer		20	
163	13	350275	Gold Bug	Maricopa	98 0535738	6N	6W	26	20	1	\$ 155	Placer		20	
164	13	350276	Gold Master	Maricopa	98 0535739	6N	6W	26	20	1	\$ 155	Placer		20	
165	13	350278	Mine Lab	Maricopa	98 0535741	6N	6W	26	20	1	\$ 155	Placer		20	
166	13	331233	Red Basin #1	Maricopa	14 0184527	6N	6W	26	145.45	8	\$ 1,240	Placer		160	OK - 8 person association
167	13	350279	Webster Mine	Maricopa	98 0535742	6N	6W	26	20	1	\$ 155	Placer		20	
168	13	350280	Whistler	Maricopa	98 0535743	6N	6W	26	20	1	\$ 155	Placer		20	
169	13	350281	Wickenburg	Maricopa	98 0535744	6N	6W	26	20	1	\$ 155	Placer		20	
170	14	321061	Lefty #2	Yavapai	2479 560	8N	1E	30	20	1	\$ 155	Placer		20	BLM shows efty #2
171	14	314631	RR-Humbug #3	Yavapai	2360 845	8N	1E	29, 30	20	1	\$ 155	Placer		60	Amended to 20 acres. 08/14.
172	14	429728	RR-Humbug 1-1	Yavapai	2014-0040505	8N	1E	31	20	1	\$ 155	Placer		New	
173	14	429729	RR-Humbug 1-2	Yavapai	2014-0040506	8N	1E	31	20	1	\$ 155	Placer		New	
174	14	429730	RR-Humbug 1-3	Yavapai	2014-0040507	8N	1E	31	20	1	\$ 155	Placer		New	
175	14	429731	RR-Humbug 1-4	Yavapai	2014-0040508	8N	1E	31	20	1	\$ 155	Placer		New	
176	14	429732	RR-Humbug 1-5	Yavapai	2014-0040509	8N	1E	31	20	1	\$ 155	Placer		New	
177	14	429733	RR-Humbug 1-6	Yavapai	2014-0040510	8N	1E	31	20	1	\$ 155	Placer		New	
178	14	429734	RR-Humbug 2-1	Yavapai	2014-0040511	8N	1E	31	20	1	\$ 155	Placer		New	
179	14	429735	RR-Humbug 2-2	Yavapai	2014-0040512	8N	1E	31	20	1	\$ 155	Placer		New	
180	15	244561	Gold Dust #2	Yavapai	1781 510	11N	3E	30	6.88	1	\$ 155	Placer		6.88	
181	15	196365	Turkey Buzzard #1	Yavapai	1529 712	11N	3E	30	13.77	1	\$ 155	Placer		13.77	
182	15	258456	Turkey Buzzard #2	Yavapai	1838 872	11N	3E	30	20	1	\$ 155	Placer		20	
183	15	258457	Turkey Buzzard #3	Yavapai	1838 874	11N	3E	30	20	1	\$ 155	Placer		20	
184	15	258458	Turkey Buzzard #4	Yavapai	1838 876	11N	3E	30	20	1	\$ 155	Placer		20	
185	15	258455	Turkey Buzzard Ext.	Yavapai	1838 870	11N	3E	30	10	1	\$ 155	Placer		10	
186	16	446011	Luck Eleven	Maricopa	2017-0736189	7N	5W	9	20	1	\$ 155	Placer		20	
187	16	430534	Lucky Eight	Maricopa	2015-0077601	7N	5W	3	20	1	\$ 155	Placer		20	
188	16	430535	Lucky Nine	Maricopa	2015-0077602	7N	5W	3	20	1	\$ 155	Placer		20	
189	16	411385	Lucky Seven	Maricopa	2015-0047844	7N	5W	3	20	1	\$ 155	Placer		20	
190	16	446010	Lucky Ten	Maricopa	2017-0736188	7N	5W	4	20	1	\$ 155	Placer		20	
191	17	407030	Carols Corner	Maricopa	11 0623989	7N	3W	18	20	1	\$ 155	Placer		20	
192	17	410364	Golden Sands	Maricopa	11 073563	7N	3W	18	20	1	\$ 155	Placer		20	

RECEIVED
 MAR 27 STATE OFFICE
 PHOENIX, ARIZONA
 2018 AUG 22 PM 2:21

RRPC Master Claims List as of September 1, 2018

\$ 43,865 <<Total Projected Maintenance Fee for 2018

283 \$ 155.00 <Enter Current Rate

#	Map	AMC #	Claim Name	County	Cnty Recorder Data Record/Book Page	Township	Range	Section	Total Acres	20 Acre Segments	Maint. Fee	Lode /Placer	PNF Lands	Original 2012 Acres	Comments
193	17	429716	Ocotillo 1-1	Maricopa	2014-0584274	7N	3W	17, 20	20	1	\$ 155	Placer		New	
194	17	429717	Ocotillo 1-2	Maricopa	2014-0584275	7N	3W	17, 20	20	1	\$ 155	Placer		New	
195	17	429718	Ocotillo 1-3	Maricopa	2014-0584276	7N	3W	17, 20	20	1	\$ 155	Placer		New	
196	17	429719	Ocotillo 1-4	Maricopa	2014-0584277	7N	3W	17, 20	20	1	\$ 155	Placer		New	
197	17	429720	Ocotillo 2-1	Maricopa	2014-0584278	7N	3W	17, 18	20	1	\$ 155	Placer		New	
198	17	429721	Ocotillo 2-2	Maricopa	2014-0584279	7N	3W	17, 18	20	1	\$ 155	Placer		New	
199	17	429722	Ocotillo 2-3	Maricopa	2014-0584280	7N	3W	17, 18	20	1	\$ 155	Placer		New	
200	17	429723	Ocotillo 2-4	Maricopa	2014-0584281	7N	3W	17, 18	20	1	\$ 155	Placer		New	
201	17	327930	Red Bird # 7	Maricopa	93 0897433	7N	3W	17	20	1	\$ 155	Placer		20	Actually 40 acres.
202	17	327931	Red Bird # 8	Maricopa	93 0897432	7N	3W	20	20	1	\$ 155	Placer		20	
203	17	328302	Red Bird # 9	Maricopa	93 0897431	7N	3W	17	20	1	\$ 155	Placer		140	Amended to 20 acres 08/14.
204	17	374726	Roslyn's Roost	Maricopa	06 1445012	7N	3W	17	20	1	\$ 155	Lode		20	Filed as lode claim
205	18	448723	Crook City Gold	Yavapai	2017-0066715	12N	2W	12	20	1	\$ 155	Placer			
206	18	450543	Crooks Canyon Gold #4	Yavapai	2018-0022975	12N	2W	12	20	1	\$ 155	Placer			
207	18	450544	Crooks Canyon Gold #5	Yavapai	2018-0022974	12N	2W	1	20	1	\$ 155	Placer			
208	18	448724	Venezia Gold	Yavapai	2017-0066714	12N	2W	12, 13	20	1	\$ 155	Placer			
209	19	326322	Double R	Maricopa	12 0735517	6N	4W	12	80	4	\$ 620	Placer		160	OK - 5 person association
210	19	329020	RR #1	Maricopa	94 0021782	6N	4W	1	20	1	\$ 155	Placer		20	
211	19	329021	RR #2	Maricopa	94 0021783	6N	4W	1	20	1	\$ 155	Placer		20	
212	19	329022	RR #3	Maricopa	94 0021784	6N	4W	1	20	1	\$ 155	Placer		20	
213	19	329023	RR #4	Maricopa	94 0021785	6N	4W	1	20	1	\$ 155	Placer		20	
214	19	339964	RR #5	Maricopa	96 0488373	6N	4W	1	20	1	\$ 155	Placer		20	
215	19	339965	RR #6	Maricopa	96 0488374	6N	4W	1	20	1	\$ 155	Placer		20	
216	19	364688	RR #7	Maricopa	05 0477984	6N	4W	1	20	1	\$ 155	Placer		20	
217	19	364689	RR #8	Maricopa	05 0477985	6N	4W	1	20	1	\$ 155	Placer		20	
218	21	64830	Catclaw	Yavapai	0912 239	9N	4W	6	20	1	\$ 155	Lode		20	Filed as lode claim
219	21	350910	Devils Nest AU 12	Yavapai	3620 62	9N	4W	6	20	1	\$ 155	Lode		20	Filed as lode claim
220	21	350907	Devils Nest AU 9	Yavapai	3620 60	9N	4W	6	20	1	\$ 155	Lode		20	Filed as lode claim
221	21	251044	Faith #3	Yavapai	1812 836	9N	5W	13	20	1	\$ 155	Placer		20	
222	21	350905	King Duck II	Yavapai	4247 552	10N/9N	4W/4W	31/6	20	1	\$ 155	Lode		20	Filed as lode claim, and BLM shows 4E, sec 6
223	21	429708	Leave No Holes 1	Yavapai	2014-0040513	9N	5W	12	20	1	\$ 155	Placer		New	
224	21	429709	Leave No Holes 2	Yavapai	2014-0040514	9N	5W	12	20	1	\$ 155	Placer		New	
225	21	429710	Leave No Holes 3	Yavapai	2014-0040515	9N	5W	12	20	1	\$ 155	Placer		New	
226	21	429711	Leave No Holes 4	Yavapai	2014-0040516	9N	5W	12	20	1	\$ 155	Placer		New	
227	21	429712	Leave No Holes 5	Yavapai	2014-0040517	9N	5W	12	20	1	\$ 155	Placer		New	
228	21	429713	Leave No Holes 6	Yavapai	2014-0040518	9N	5W	12	20	1	\$ 155	Placer		New	
229	21	429714	Leave No Holes 7	Yavapai	2014-0040519	9N	5W	12	20	1	\$ 155	Placer		New	
230	21	429715	Leave No Holes 8	Yavapai	2014-0040520	9N	5W	12	20	1	\$ 155	Placer		New	
231	21	350906	Little Terry	Yavapai	4247 551	9N	4W	6	20	1	\$ 155	Lode		20	Filed as lode claim
232	21	251047	Lords Blessing	Yavapai	1803 415	9N	5W	13	20	1	\$ 155	Placer		20	
233	21	68531	Thomason	Yavapai	0121 511	9N	4W	7	20	1	\$ 155	Placer		20	
234	22	429675	C-6 Placer 1	La Paz	2014-02950	4N	20W	23	20	1	\$ 155	Placer		New	
235	22	429676	C-6 Placer 2	La Paz	2014-02951	4N	20W	23	20	1	\$ 155	Placer		New	
236	22	429677	C-6 Placer 3	La Paz	2014-02952	4N	20W	23	20	1	\$ 155	Placer		New	
237	22	429678	CD7 Placer 1	La Paz	2014-02953	4N	20W	15	20	1	\$ 155	Placer		New	
238	22	429679	CD7 Placer 2	La Paz	2014-02954	4N	20W	15	20	1	\$ 155	Placer		New	
239	22	429680	CD7 Placer 3	La Paz	2014-02955	4N	20W	15	20	1	\$ 155	Placer		New	
240	22	429681	CD7 Placer 4	La Paz	2014-02956	4N	20W	14	20	1	\$ 155	Placer		New	
241	22	429682	CD7 Placer 5	La Paz	2014-02957	4N	20W	23	20	1	\$ 155	Placer		New	
242	22	429683	CD7 Placer 6	La Paz	2014-02958	4N	20W	23	20	1	\$ 155	Placer		New	
243	22	433937	Diablo Placer 1	La Paz	2015-03207	4N	20W	24	20	1	\$ 155	Placer		New	
244	22	433938	Diablo Placer 2	La Paz	2015-03208	4N	20W	24	20	1	\$ 155	Placer		New	
245	22	433939	Diablo Placer 3	La Paz	2015-03209	4N	20W	23	20	1	\$ 155	Placer		New	
246	22	433940	Diablo Placer 4	La Paz	2015-03210	4N	20W	23	20	1	\$ 155	Placer		New	
247	22	440315	Diablo Placer 5	La Paz	2016-03907	4N	20W	23	20	1	\$ 155	Placer		New	
248	22	440316	Diablo Placer 6	La Paz	2016-03908	4N	20W	23	20	1	\$ 155	Placer		New	
249	22	440317	Diablo Placer 7	La Paz	2016-03909	4N	20W	23	20	1	\$ 155	Placer		New	
250	22	440318	Diablo Placer 8	La Paz	2016-03910	4N	20W	23	10	1	\$ 155	Placer		New	
251	22	435566	Eastside Placer 1	La Paz	2015-04234	4N	20W	23	20	1	\$ 155	Placer		New	
252	22	435567	Eastside Placer 2	La Paz	2015-04235	4N	20W	23	20	1	\$ 155	Placer		New	
253	22	435568	Eastside Placer 3	La Paz	2015-04235	4N	20W	23	10	1	\$ 155	Placer		New	
254	23	326754	Keystone #1	Pinal	1922 836	5S	15E	4	20	1	\$ 155	Placer		20	
255	23	326764	Keystone #11	Pinal	1922 856	5S	15E	4	20	1	\$ 155	Placer		20	
256	23	326765	Keystone #12	Pinal	1922 858	5S	15E	4	20	1	\$ 155	Placer		20	

RECEIVED
 ARIZONA STATE OFFICE
 PHOENIX, ARIZONA
 2018 AUG 22 P 2:21

RRPC Master Claims List as of September 1, 2018

\$ 43,865 <<Total Projected Maintenance Fee for 2018

283 \$ 155.00 <Enter Current Rate

#	Map	AMC #	Claim Name	County	Cnty Recorder Data Record/Book Page	Township	Range	Section	Total Acres	20 Acre Segments	Maint. Fee	Lode /Placer	PNF Lands	Original 2012 Acres	Comments
257	23	326757	Keystone #4	Pinal	1922 842	5S	15E	4	20	1	\$ 155	Placer		20	
258	23	326758	Keystone #5	Pinal	1922 844	5S	15E	4	20	1	\$ 155	Placer		20	
259	23	326760	Keystone #7	Pinal	1922 848	5S	15E	4	20	1	\$ 155	Placer		20	
260	23	326761	Keystone #8	Pinal	1922 850	5S	15E	4	20	1	\$ 155	Placer		20	
261	23	326762	Keystone #9	Pinal	1922 852	5S	15E	4	20	1	\$ 155	Placer		20	
262	24	451088	C and S Honey Hole	Yavapai	2018-0022978	11N	1E	25	20	1	\$ 155	Placer	PNF	New	May-18
263	24	451089	Ron's Roost	Yavapai	2018-0022979	11N	1E	25	20	1	\$ 155	Placer	PNF	New	May-18
264	24	451091	Wayne's World	Yavapai	2018-0022977	11N	1E	36	20	1	\$ 155	Placer	PNF	New	May-18
265	26	429669	Bumble Bee King 1	Yavapai	2014-0040521	9N	2E	5	20	1	\$ 155	Placer		New	
266	26	429670	Bumble Bee King 2	Yavapai	2014-0040522	9N	2E	5	20	1	\$ 155	Placer		New	
267	26	429671	Bumble Bee King 3	Yavapai	2014-0040523	9N	2E	5	20	1	\$ 155	Placer		New	
268	26	429672	Bumble Bee King 4	Yavapai	2014-0040524	9N	2E	5	20	1	\$ 155	Placer		New	
269	26	429673	Bumble Bee King 5	Yavapai	2014-0040525	9N	2E	5	20	1	\$ 155	Placer		New	
270	26	429674	Bumble Bee King 6	Yavapai	2014-0040526	9N	2E	5	20	1	\$ 155	Placer		New	
271	27	314304	Oro De Valenzuela	Yavapai	3436 378	11N	1E	14	20	1	\$ 155	Placer	PNF	23.42	Amended to 20 acres 08/14.
272	28	364340	Mary Francis	Yavapai	3824744 4236 718	13N	1E	29	16	1	\$ 155	Placer		16	

5,548.9 283 \$ 43,865
 283 segments x \$155 = \$ 43,865

15/09/18 OK
 15/08/19
 C. J. S. B.

Notes:

Au Sum 1 and Wolf 4 are duplicated in BLM records.
 All 11 lode claims are listed as 20.66 acres, not 20 acres,
 Col. J = Acreage recorded by BLM

RECEIVED
 PHOENIX, ARIZONA
 2018 AUG 22 P 2:22
 AZ STATE OFFICE

United States Department of the Interior
Bureau of Land Management
 DIV OF LANDS, MINRLS & ENERGY
 ONE N CENTRAL AVE
 PHOENIX, AZ 85004 -4427
 Phone: 602-417-9200

Receipt

No: 4241956

Transaction #: 4357380	
Date of Transaction: 08/22/2018	
CUSTOMER:	
ROADRUNNER PROSPECTORS CLUB INC PO BOX 56804 PHOENIX, AZ 85079-6804 US	

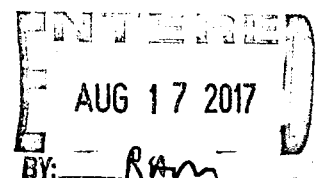
LINE #	QTY	DESCRIPTION	REMARKS	UNIT PRICE	TOTAL
1	1.00	LOCATABLE MINERALS / MINING CLAIMS-NOT NEW-UNADJUD, ONE AUTH NO. ONLY / MINING CLAIM MONEY RECEIVED CASES: AMC374513/\$43865.00	2019 MAINT/283	- n/a -	43865.00
TOTAL:					\$43,865.00

PAYMENT INFORMATION			
1	AMOUNT:	43865.00	POSTMARKED: N/A
	TYPE:	CHECK	RECEIVED: 08/22/2018
	CHECK NO:	9459	
	NAME:	ROADRUNNER PROSPECTORS CLUB INC PO BOX 56804 PHOENIX AZ 85079-6804 US	

REMARKS

This receipt was generated by the automated BLM Collections and Billing System and is a paper representation of a portion of the official electronic record contained therein.

95198	406356	339964	313473	102389
96051	407030	348628	314304	11413
	410363	350275	314626	126534
	411385	350903	321061	130488
	427326	356380	326311	142355
	429664	356553	326754	157621
	430534	358378	326772	170911
	430611	358379	327930	174224
	433937	358379	327930	191670
	435083	362558	328302	196365
	435561	364340	328593	235841
	437448	364688	328689	236096
	437934	364820	328742	244561
	440315	365711	329013	247112
	48976	366267	329318	251042
	62606	368415	329388	254410
	64830	371350	329800	258455
	68526	371802	331232	291104
	74734	374274	331455	300332
	76950	374511	333426	
	82212	374726	338207	
	89414			



#	Map	AMC #	Claim Name	County	Cnty Recorder Data Record/Book Page	Township	Range	Section	Total Acres	20 Acre Segments	Maint. Fe
1	1	374513	Caitlin Lisa	Yavapai	4452 917	12.5, 13N	1W	23,24,35,36	20.0	1	\$ 155
2	1	374512	Cole Ryan	Yavapai	2014-0056442	12.5N	1W	24	18.5	1	\$ 155
3	1	365711	Diggems Paradise	Yavapai	3864391 4269 775	12.5N	1W	26	17.1	1	\$ 155
4	1	191670	Roadrunner #1	Yavapai	1514 754	12.5N	1W	25	12.85	1	\$ 155
5	1	191671	Roadrunner #2	Yavapai	1514 756	12.5N	1W	25	20	1	\$ 155
6	1	348628	Vira Anne 1	Yavapai	2015-0008296	12.5N	1W	27	17.3	1	\$ 155
7	1	430611	Vira Anne 2	Yavapai	2014-0008298	12.5N	1W	27	16.50	1	\$ 155
8	2	328703	Ceedee #1	Yavapai	2746 703	8N	1W	5	20	1	\$ 155
9	2	328593	Ceedee #2	Yavapai	2742 961	8N	1W	5	20	1	\$ 155
10	2	328594	Ceedee #3	Yavapai	2742 963	8N	1W	5	20	1	\$ 155
11	2	328595	Ceedee #4	Yavapai	2742 965	8N	1W	5	20	1	\$ 155
12	2	328704	Ceedee #5	Yavapai	2746 705	8N	1W	5	20	1	\$ 155
13	2	328597	Ceedee #7	Yavapai	2742 969	8N	1W	4	20	1	\$ 155
14	2	328598	Ceedee #8	Yavapai	2742 971	8N	1W	4	20	1	\$ 155
15	3	374511	Carolyn D	Yavapai	4444 69	13N	3W	29	20.0	1	\$ 155
16	3	371802	Happy Times	Yavapai	4390 621	13N	3W	29, 32	20	1	\$ 155
17	3	368415	Jacks Hideaway	Yavapai	4308 863	13N	3W	29	20	1	\$ 155
18	3	366268	Renee's Best Chance	Yavapai	4281 507	13N	3W	32	20	1	\$ 155
19	3	371803	Saddle Tramps	Yavapai	4390 622	13N	3W	29	20	1	\$ 155
20	3	366270	Stuck Duck	Yavapai	4281 506	13N	3W	32	20	1	\$ 155
21	3	371350	Wilgers Wish	Yavapai	4372 442	13N	3W	32	20	1	\$ 155
22	4	96051	JDR #1	Yavapai	1267 825	12.5N	2W	21	20	1	\$ 155
23	4	96052	JDR #2	Yavapai	1267 827	12.5N	2W	21	20	1	\$ 155
24	4	96053	JDR #3	Yavapai	1267 829	12.5N/13N	2W/2W	21/33	20	1	\$ 155
25	5	328705	Genes Dream	Yavapai	2746 707	9.5N	2E	20, 21	20	1	\$ 155
26	5	362558	Holly Marie	Yavapai	3769442 4190 312	9.5N	2E	20, 21	11.45	1	\$ 155
27	5	429703	Janet Lynn 2-1	Yavapai	2014-0040485	10N	1E	12	20	1	\$ 155
28	5	435087	Janet Lynn 2-2	Yavapai	2015-0052258	10N	1E	12, 13	15	1	\$ 155
29	5	435088	Janet Lynn 2-3	Yavapai	2015-0052259	10N	1E	12, 13	15	1	\$ 155
30	5	435569	Laura Kay 1-1	Yavapai	2015-0055540	10N	1E	12	20	1	\$ 155
31	5	435570	Laura Kay 1-2	Yavapai	2015-0055541	10N	1E	12	20	1	\$ 155
32	5	435571	Laura Kay 1-3	Yavapai	2015-0055542	10N	1E	12	20	1	\$ 155
33	5	126538	Mandala 10	Yavapai	1371 343	10N	2E	31	20	1	\$ 155
34	5	129334	Mandala 12	Yavapai	1376 706	10N	2E	30	20	1	\$ 155
35	5	157621	Mandala 14	Yavapai	1437 981	10N	2E	30	20	1	\$ 155
36	5	102389	Mandala 2 & 3	Yavapai	1293 289	10N	2E	30	20	1	\$ 155
37	5	126535	Mandala 7	Yavapai	1371 337	10N	2E	30	20	1	\$ 155
38	5	126536	Mandala 8	Yavapai	1371 339	10N	2E	30	20	1	\$ 155
39	5	126537	Mandala 9	Yavapai	1371 341	10N	2E	30	20	1	\$ 155
40	5	170911	Wednesday Hope #1	Yavapai	1467 691	10N	2E	31	20	1	\$ 155
41	5	11413	Wednesday Hope #4	Yavapai	1015 726, 1799 33, 1569 374	9.5N/10N	2E/2E	20/32	20	1	\$ 155
42	6	329388	Bad Luck	Yavapai	2780 912	12N	1W	14, 23	20	1	\$ 155
43	6	235841	Betty #4	Yavapai	1713 778	12N	1W	14	20	1	\$ 155
44	6	235842	Betty #5	Yavapai	1713 780	12N	1W	14	20	1	\$ 155
45	6	174224	Big Rock #1	Yavapai	1469 76	12N	1W	10, 11	20	1	\$ 155
46	6	174225	Big Rock #2	Yavapai	1469 78	12N	1W	10	20	1	\$ 155
47	6	236096	Gary's Place #1A	Yavapai	1714 193	12N	1W	14	20	1	\$ 155
48	6	329390	Good Luck	Yavapai	2780 916	12N	1W	23, 24	20	1	\$ 155
49	6	329391	Great Luck	Yavapai	2780 918	12N	1W	24	20	1	\$ 155
50	6	329389	No Luck	Yavapai	2780 914	12N	1W	23	20	1	\$ 155
51	6	364821	Ray's Right Place	Yavapai	3837647 4247 553	12N	1W	24	17.0	1	\$ 155
52	7	366267	Cobi's Gold	Yavapai	4281 505	11.5N	1E	19	20	1	\$ 155
53	7	427326	Rexs' Place	Yavapai	4914 661	11.5N	1E	30	20	1	\$ 155
54	7	366269	Rough Road	Yavapai	4281 503	11.5N	1E	30	20	1	\$ 155
55	7	366271	Tegan's Bank	Yavapai	4281 504	11.5N	1E	30	20	1	\$ 155
56	7	89420	Wolf #1	Yavapai	0961 673, 90 203541	11.5N	1E	31	20	1	\$ 155
57	7	89421	Wolf #2	Yavapai	0961 674, 2207 41	11.5N	1E	31	20	1	\$ 155
58	7	89422	Wolf #3	Yavapai	0961 675, 2207 41	11.5N	1E	31	20	1	\$ 155
59	7	89423	Wolf #4	Yavapai	0961 676, 2207 41	11.5N/11N	1E/1E	31/6	20	1	\$ 155
60	7	300332	Wolf #5	Yavapai	2208 526	11.5N	1E	31	20	1	\$ 155
61	7	300333	Wolf #6	Yavapai	2208 524	11N	1E	5, 6	20	1	\$ 155
62	8	82213	Bean Bag #1	Yavapai	0965 338, 1252 276	12N	1W	28	20	1	\$ 155
63	8	435561	Bean Bag 2-1	Yavapai	2015-0055543	10N	2E	30	20	1	\$ 155
64	8	435562	Bean Bag 2-2	Yavapai	2015-0055544	10N	2E	30	20	1	\$ 155
65	8	328605	Burro #1	Yavapai	2742 987	12N	1W	33	20	1	\$ 155
66	8	328606	Burro #2	Yavapai	2742 985	11N	1W	4	20	1	\$ 155
67	8	142356	Donkey Mine #4	Yavapai	1422 292	12N	1W	33	20	1	\$ 155
68	8	437451	Goodwin 1-1	Yavapai	2016-0019094	12N	1W	28, 33	20	1	\$ 155
69	8	437452	Goodwin 1-2	Yavapai	2016-0019093	12N	1W	33	20	1	\$ 155
70	8	329318	Mercer's Place	Yavapai	2777 216, 3288 700	11N	1W	4	20	1	\$ 155
71	8	76951	Merciful Heavens #2	Yavapai	1329 344	12N/11N	1W/1W	33/4	20	1	\$ 155
72	8	313473	Patriot 1	Yavapai	2347 704	11N	1W	4	20	1	\$ 155

#	Map	AMC #	Claim Name	County	Cnty Recorder Data Record/Book Page	Township	Range	Section	Total Acres	20 Acre Segments	Maint. Fee
73	8	313474	Patriot 2	Yavapai	2347 706	11N	1W	3, 4	20	1	\$ 155
74	8	313475	Patriot 3	Yavapai	2347 708	11N	1W	3	20	1	\$ 155
75	8	313476	Patriot 4	Yavapai	2347 710	11N	1W	3	20	1	\$ 155
76	8	313477	Patriot 5	Yavapai	2347 712	11N	1W	3	20	1	\$ 155
77	8	130489	Protecto 2	Yavapai	1381 826	12N	1W	33	20	1	\$ 155
78	9	329394	Bonny	Yavapai	2780 924	12N	1W	30	20	1	\$ 155
79	9	331455	Chris #1	Yavapai	2919 631	12N	2W	36	20.0	1	\$ 155
80	9	329392	Clinton	Yavapai	2780 920	12N/12N	1W/2W	30/25	20	1	\$ 155
81	9	329393	Clyde	Yavapai	2780 922	12N/12N	1W/2W	30/25	20	1	\$ 155
82	9	356382	Ducbill #1	Yavapai	27429 1402 63	12N	1W	17	20	1	\$ 155
83	9	356383	Ducbill #2	Yavapai	27430 1402 65	12N	1W	17	20	1	\$ 155
84	9	95198	Gold Palace I	Yavapai	1256 447	12N	1W	19	20	1	\$ 155
85	9	95199	Gold Palace II	Yavapai	1256 450	12N	1W	19	20	1	\$ 155
86	9	95200	Gold Palace III	Yavapai	1256 453	12N	1W	19	20	1	\$ 155
87	9	95201	Gold Palace IV	Yavapai	1256 456	12N	1W	19	20	1	\$ 155
88	9	95202	Gold Palace V	Yavapai	1256 459	12N	1W	19	20	1	\$ 155
89	9	95203	Gold Palace VI	Yavapai	1256 462	12N	1W	19	20	1	\$ 155
90	9	95204	Gold Palace VII	Yavapai	1256 465	12N	1W	19	20	1	\$ 155
91	9	95205	Gold Palace VIII	Yavapai	1256 468	12N	1W	30	20	1	\$ 155
92	9	358378	Hidden Treasure	Yavapai	3633816 4076 796	12N/12N	1W/2W	30,31/25,36	20	1	\$ 155
93	10	358379	Aquarius Ext. West #1	Yavapai	3633817 4076 797	10N	2E	18	20	1	\$ 155
94	10	358380	Aquarius Ext. West #2	Yavapai	3633818 4076 798	10N	2E	18	20	1	\$ 155
95	10	358381	Aquarius Ext. West #3	Yavapai	3633819 4076 799	10N	2E	18	20	1	\$ 155
96	10	358382	Aquarius Ext. West #4	Yavapai	3633820 4076 800	10N	2E	18	20	1	\$ 155
97	10	48976	Aquarius #1	Yavapai	0801 192 ***	10N	2E	7	20	1	\$ 155
98	10	62606	Aquarius #2	Yavapai	1001 437	10N	2E	7	20	1	\$ 155
99	10	48977	Aquarius #3	Yavapai	0801 194 ***	10N	2E	7, 18	20	1	\$ 155
100	10	435083	Aquarius Extension 1	Yavapai	2015-0052260	10N	2E	18	20	1	\$ 155
101	10	435084	Aquarius Extension 2	Yavapai	2015-0052261	10N	2E	18	20	1	\$ 155
102	10	435085	Aquarius Extension 3	Yavapai	2015-0052262	10N	2E	18	20	1	\$ 155
103	10	435086	Aquarius Extension 4	Yavapai	2015-0052263	10N	2E	18	20	1	\$ 155
104	11	254412	Hinny	Yavapai	4069 601, 1341 96, 1807 656	11N	1E	34	16.22	1	\$ 155
105	11	254410	Jackass	Yavapai	4069 605	11N	1E	34, 35	19.97	1	\$ 155
106	11	254411	Jenney	Yavapai	4069 602	11N	1E	34	20	1	\$ 155
107	11	328742	Red Bird #11	Yavapai	2754 072	10N	1E	1	40	2	\$ 310
108	11	74736	Sharon Lee #3	Yavapai	0912 399	10N	1E	2	20	1	\$ 155
109	11	429736	Sharon Lee 1-1	Yavapai	2014-0040492	11N	1E	35, 36	20	1	\$ 155
110	11	429737	Sharon Lee 1-2	Yavapai	2014-0040493	11N	1E	35, 36	20	1	\$ 155
111	11	429738	Sharon Lee 1-3	Yavapai	2014-0040494	11N	1E	35, 36	20	1	\$ 155
112	11	429739	Sharon Lee 1-4	Yavapai	2014-0040495	11N	1E	35, 36	20	1	\$ 155
113	11	429740	Sharon Lee 2-1	Yavapai	2014-0040496	11N	1E	35	20	1	\$ 155
114	11	429741	Sharon Lee 2-2	Yavapai	2014-0040497	11N	1E	35	20	1	\$ 155
115	11	429742	Sharon Lee 2-3	Yavapai	2014-0040498	11N	1E	35	20	1	\$ 155
116	11	429743	Sharon Lee 4-1	Yavapai	2014-0040499	10N	1E	1, 2	20	1	\$ 155
117	11	429744	Sharon Lee 4-2	Yavapai	2014-0040500	10N	1E	1, 2	20	1	\$ 155
118	11	429745	Sharon Lee 4-3	Yavapai	2014-0040501	10N	1E	1, 2	20	1	\$ 155
119	11	429746	Sharon Lee 4-4	Yavapai	2014-0040502	10N	1E	1, 2	20	1	\$ 155
120	11	429747	Sharon Lee 4-5	Yavapai	2014-0040503	10N	1E	1, 2	20	1	\$ 155
121	11	429748	Sharon Lee 4-6	Yavapai	2014-0040504	10N	1E	1, 2	20	1	\$ 155
122	12	326313	Carrie #3	Maricopa	93 0174160	7N	3W	30	20	1	\$ 155
123	12	326314	Carrie #4	Maricopa	93 0174159	7N	3W	30	20	1	\$ 155
124	12	437934	Carrie 1-1	Maricopa	2016-0242927	7N	3W	31	20	1	\$ 155
125	12	437449	Carrie 1-2	Maricopa	2016-0222160	7N	3W	31	20	1	\$ 155
126	12	326312	Carrie 2-1	Maricopa	2016-0222161	7N	3W	31	20	1	\$ 155
127	12	437450	Carrie 2-2	Maricopa	2016-0222162	7N	3W	31	20	1	\$ 155
128	12	291104	Cas #2	Maricopa	92 0366284, 88 598383	7N	3W	29	20	1	\$ 155
129	12	410363	Cass # 10	Maricopa	11 0735632	7N	3W	29	20	1	\$ 155
130	12	328698	Cass No. 4	Maricopa	93 0885578	7N	3W	29	20	1	\$ 155
131	12	328699	Cass No. 5	Maricopa	93 0885577	7N	3W	29	20	1	\$ 155
132	12	328700	Cass No. 6	Maricopa	93 0885576	7N	3W	29	20	1	\$ 155
133	12	328701	Cass No. 7	Maricopa	93 0885575	7N	3W	29	20	1	\$ 155
134	12	328702	Cass No. 8	Maricopa	93 0885574	7N	3W	29	20	1	\$ 155
135	12	406356	Cass No. 9	Maricopa	11 0623988	7N	3W	29	20	1	\$ 155
136	12	374275	Charles' Dream	Maricopa	06 1491112	7N	3W	20	20	1	\$ 155
137	12	329800	Gypsy Moth 1	Maricopa	94 0218517	7N	3W	21	20	1	\$ 155
138	12	329801	Gypsy Moth 2	Maricopa	94 0218518	7N	3W	21	20	1	\$ 155
139	12	326325	Jake #3	Maricopa	93 0174145	7N	3W	29	20	1	\$ 155
140	12	429695	Jake 1-1	Maricopa	2014-0584266	7N	3W	29	20	1	\$ 155
141	12	429696	Jake 1-2	Maricopa	2014-0584267	7N	3W	29	20	1	\$ 155
142	12	429697	Jake 1-3	Maricopa	2014-0584268	7N	3W	29	20	1	\$ 155
143	12	429698	Jake 1-4	Maricopa	2014-0584269	7N	3W	29	20	1	\$ 155
144	12	429699	Jake 2-1	Maricopa	2014-0584270	7N	3W	29	20	1	\$ 155

PHOENIX ARIZONA
 2017 AUG 16 PM 12:46
 OFFICE

RRPC Water Claims List as of January 1, 2017

\$ 43,24

279 \$ 155.0

#	Map	AMC #	Claim Name	County	Cnty Recorder Data Record/Book Page	Township	Range	Section	Total Acres	20 Acre Segments	Maint. Fe
145	12	429700	Jake 2-2	Maricopa	2014-0584271	7N	3W	29	20	1	\$ 15
146	12	429701	Jake 2-3	Maricopa	2014-0584272	7N	3W	29	20	1	\$ 15
147	12	429702	Jake 2-4	Maricopa	2014-0584273	7N	3W	29	20	1	\$ 15
148	12	333426	La Siesta #1	Maricopa	95 0185054	7N	3W	30	20	1	\$ 15
149	12	333427	La Siesta #3	Maricopa	95 0185055	7N	3W	30	20	1	\$ 15
150	12	374274	Lori's Place	Maricopa	06 1491113	7N	3W	20	20	1	\$ 15
151	12	326319	Pat	Maricopa	93 0174152	7N	3W	31	20	1	\$ 15
152	12	326316	Pennyweight #2	Maricopa	93 0174156	7N	3W	29	20	1	\$ 15
153	12	326315	Pennyweight 1-1	Maricopa	2016-0222163	7N	3W	29	20	1	\$ 15
154	12	437453	Pennyweight 1-2	Maricopa	2016-0222164	7N	3W	29	20	1	\$ 15
155	12	326327	Pilgrim #1	Maricopa	93 0174153	7N	3W	31	20	1	\$ 15
156	12	429724	Randy B 1	Maricopa	2014-0584262	7N	3W	30	20	1	\$ 15
157	12	429725	Randy B 2	Maricopa	2014-0584263	7N	3W	30	20	1	\$ 15
158	12	429726	Randy B 3	Maricopa	2014-0584264	7N	3W	30	20	1	\$ 15
159	12	429727	Randy B 4	Maricopa	2014-0584265	7N	3W	30	20	1	\$ 15
160	12	326772	Range Bull # 1	Maricopa	93 0362063	7N	3W	21	20	1	\$ 15
161	12	247112	Sando	Maricopa	85 0559653	7N	3W	28	20	1	\$ 15
162	13	350275	Gold Bug	Maricopa	98 0535738	6N	6W	26	20	1	\$ 15
163	13	350276	Gold Master	Maricopa	98 0535739	6N	6W	26	20	1	\$ 15
164	13	350277	Lobo	Maricopa	98 0535740	6N	6W	26	20	1	\$ 15
165	13	350278	Mine Lab	Maricopa	98 0535741	6N	6W	26	20	1	\$ 15
166	13	331233	Red Basin #1	Maricopa	14 0184527	6N	6W	26	145.45	8	\$ 1,24
167	13	350279	Webster Mine	Maricopa	98 0535742	6N	6W	26	20	1	\$ 15
168	13	350280	Whistler	Maricopa	98 0535743	6N	6W	26	20	1	\$ 15
169	13	350281	Wickenburg	Maricopa	98 0535744	6N	6W	26	20	1	\$ 15
170	14	321061	Lefty #2	Yavapai	2479 560	8N	1E	30	20	1	\$ 15
171	14	314631	RR-Humbug #3	Yavapai	2360 845	8N	1E	29, 30	20	1	\$ 15
172	14	429728	RR-Humbug 1-1	Yavapai	2014-0040505	8N	1E	31	20	1	\$ 15
173	14	429729	RR-Humbug 1-2	Yavapai	2014-0040506	8N	1E	31	20	1	\$ 15
174	14	429730	RR-Humbug 1-3	Yavapai	2014-0040507	8N	1E	31	20	1	\$ 15
175	14	429731	RR-Humbug 1-4	Yavapai	2014-0040508	8N	1E	31	20	1	\$ 15
176	14	429732	RR-Humbug 1-5	Yavapai	2014-0040509	8N	1E	31	20	1	\$ 15
177	14	429733	RR-Humbug 1-6	Yavapai	2014-0040510	8N	1E	31	20	1	\$ 15
178	14	429734	RR-Humbug 2-1	Yavapai	2014-0040511	8N	1E	31	20	1	\$ 15
179	14	429735	RR-Humbug 2-2	Yavapai	2014-0040512	8N	1E	31	20	1	\$ 15
180	15	244561	Gold Dust #2	Yavapai	1781 510	11N	3E	30	6.88	1	\$ 15
181	15	196365	Turkey Buzzard #1	Yavapai	1529 712	11N	3E	30	13.77	1	\$ 15
182	15	258456	Turkey Buzzard #2	Yavapai	1838 872	11N	3E	30	20	1	\$ 15
183	15	258457	Turkey Buzzard #3	Yavapai	1838 874	11N	3E	30	20	1	\$ 15
184	15	258458	Turkey Buzzard #4	Yavapai	1838 876	11N	3E	30	20	1	\$ 15
185	15	258455	Turkey Buzzard Ext.	Yavapai	1838 870	11N	3E	30	10	1	\$ 15
186	16	430534	Lucky Eight	Maricopa	2015-0077601	7N	5W	3	20	1	\$ 15
187	16	430535	Lucky Nine	Maricopa	2015-0077602	7N	5W	3	20	1	\$ 15
188	16	411385	Lucky Seven	Maricopa	2015-0047844	7N	5W	3	20	1	\$ 15
189	17	407030	Carols Corner	Maricopa	11 0623989	7N	3W	18	20	1	\$ 15
190	17	410364	Golden Sands	Maricopa	11 073563	7N	3W	18	20	1	\$ 15
191	17	429716	Ocotillo 1-1	Maricopa	2014-0584274	7N	3W	17, 20	20	1	\$ 15
192	17	429717	Ocotillo 1-2	Maricopa	2014-0584275	7N	3W	17, 20	20	1	\$ 15
193	17	429718	Ocotillo 1-3	Maricopa	2014-0584276	7N	3W	17, 20	20	1	\$ 15
194	17	429719	Ocotillo 1-4	Maricopa	2014-0584277	7N	3W	17, 20	20	1	\$ 15
195	17	429720	Ocotillo 2-1	Maricopa	2014-0584278	7N	3W	17, 18	20	1	\$ 15
196	17	429721	Ocotillo 2-2	Maricopa	2014-0584279	7N	3W	17, 18	20	1	\$ 15
197	17	429722	Ocotillo 2-3	Maricopa	2014-0584280	7N	3W	17, 18	20	1	\$ 15
198	17	429723	Ocotillo 2-4	Maricopa	2014-0584281	7N	3W	17, 18	20	1	\$ 15
199	17	327930	Red Bird # 7	Maricopa	93 0897433	7N	3W	17	20	1	\$ 15
200	17	327931	Red Bird # 8	Maricopa	93 0897432	7N	3W	20	20	1	\$ 15
201	17	328302	Red Bird # 9	Maricopa	93 0897431	7N	3W	17	20	1	\$ 15
202	17	374726	Roslyn's Roost	Maricopa	06 1445012	7N	3W	17	20	1	\$ 15
203	19	326322	Double R	Maricopa	12 0735517	6N	4W	12	80	4	\$ 620
204	19	329020	RR #1	Maricopa	94 0021782	6N	4W	1	20	1	\$ 15
205	19	329021	RR #2	Maricopa	94 0021783	6N	4W	1	20	1	\$ 15
206	19	329022	RR #3	Maricopa	94 0021784	6N	4W	1	20	1	\$ 15
207	19	329023	RR #4	Maricopa	94 0021785	6N	4W	1	20	1	\$ 15
208	19	339964	RR #5	Maricopa	96 0488373	6N	4W	1	20	1	\$ 15
209	19	339965	RR #6	Maricopa	96 0488374	6N	4W	1	20	1	\$ 15
210	19	364688	RR #7	Maricopa	05 0477984	6N	4W	1	20	1	\$ 15
211	19	364689	RR #8	Maricopa	05 0477985	6N	4W	1	20	1	\$ 15
212	19	338207	Seven Grand	Maricopa	98 0139764	7N	4W	25	20	1	\$ 15
213	20	356553	Au Sum 1	Yavapai	2016-0019091	10N	2E	29,32	20	1	\$ 15
214	20	437448	Au Sum 2	Yavapai	2016-0019092	10N	2E	28,33	20	1	\$ 15
215	21	64830	Catclaw	Yavapai	0912 239	9N	4W	6	20	1	\$ 15
216	21	350910	Devils Nest AU 12	Yavapai	3620 62	9N	4W	6	20	1	\$ 15

#	Map	AMC #	Claim Name	County	Cnty Recorder Data Record/Book Page	Township	Range	Section	Total Acres	20 Acre Segments	Maint. Fe
217	21	350907	Devils Nest AU 9	Yavapai	3620 60	9N	4W	6	20	1	\$ 155
218	21	251044	Faith #3	Yavapai	1812 836	9N	5W	13	20	1	\$ 155
219	21	350905	King Duck II	Yavapai	4247 552	10N/9N	4W/4W	31/6	20	1	\$ 155
220	21	429708	Leave No Holes 1	Yavapai	2014-0040513	9N	5W	12	20	1	\$ 155
221	21	429709	Leave No Holes 2	Yavapai	2014-0040514	9N	5W	12	20	1	\$ 155
222	21	429710	Leave No Holes 3	Yavapai	2014-0040515	9N	5W	12	20	1	\$ 155
223	21	429711	Leave No Holes 4	Yavapai	2014-0040516	9N	5W	12	20	1	\$ 155
224	21	429712	Leave No Holes 5	Yavapai	2014-0040517	9N	5W	12	20	1	\$ 155
225	21	429713	Leave No Holes 6	Yavapai	2014-0040518	9N	5W	12	20	1	\$ 155
226	21	429714	Leave No Holes 7	Yavapai	2014-0040519	9N	5W	12	20	1	\$ 155
227	21	429715	Leave No Holes 8	Yavapai	2014-0040520	9N	5W	12	20	1	\$ 155
228	21	350906	Little Terry	Yavapai	4247 551	9N	4W	6	20	1	\$ 155
229	21	251047	Lords Blessing	Yavapai	1803 415	9N	5W	13	20	1	\$ 155
230	21	68531	Thomason	Yavapai	0121 511	9N	4W	7	20	1	\$ 155
231	22	429675	C-6 Placer 1	La Paz	2014-02950	4N	20W	23	20	1	\$ 155
232	22	429676	C-6 Placer 2	La Paz	2014-02951	4N	20W	23	20	1	\$ 155
233	22	429677	C-6 Placer 3	La Paz	2014-02952	4N	20W	23	20	1	\$ 155
234	22	429678	CD7 Placer 1	La Paz	2014-02953	4N	20W	15	20	1	\$ 155
235	22	429679	CD7 Placer 2	La Paz	2014-02954	4N	20W	15	20	1	\$ 155
236	22	429680	CD7 Placer 3	La Paz	2014-02955	4N	20W	15	20	1	\$ 155
237	22	429681	CD7 Placer 4	La Paz	2014-02956	4N	20W	14	20	1	\$ 155
238	22	429682	CD7 Placer 5	La Paz	2014-02957	4N	20W	23	20	1	\$ 155
239	22	429683	CD7 Placer 6	La Paz	2014-02958	4N	20W	23	20	1	\$ 155
240	22	429691	D6 Placer 1	La Paz	2014-02946	4N	20W	26	20	1	\$ 155
241	22	429692	D6 Placer 2	La Paz	2014-02947	4N	20W	26	20	1	\$ 155
242	22	433937	Diablo Placer 1	La Paz	2015-03207	4N	20W	24	20	1	\$ 155
243	22	433938	Diablo Placer 2	La Paz	2015-03208	4N	20W	24	20	1	\$ 155
244	22	433939	Diablo Placer 3	La Paz	2015-03209	4N	20W	23	20	1	\$ 155
245	22	433940	Diablo Placer 4	La Paz	2015-03210	4N	20W	23	20	1	\$ 155
246	22	440315	Diablo Placer 5	La Paz	2016-03907	4N	20W	23	20	1	\$ 155
247	22	440316	Diablo Placer 6	La Paz	2016-03908	4N	20W	23	20	1	\$ 155
248	22	440317	Diablo Placer 7	La Paz	2016-03909	4N	20W	23	20	1	\$ 155
249	22	440318	Diablo Placer 8	La Paz	2016-03910	4N	20W	23	10	1	\$ 155
250	22	435566	Eastside Placer 1	La Paz	2015-04234	4N	20W	23	20	1	\$ 155
251	22	435567	Eastside Placer 2	La Paz	2015-04236	4N	20W	23	20	1	\$ 155
252	22	435568	Eastside Placer 3	La Paz	2015-04235	4N	20W	23	10	1	\$ 155
253	23	326754	Keystone #1	Pinal	1922 836	5S	15E	4	20	1	\$ 155
254	23	326764	Keystone #11	Pinal	1922 856	5S	15E	4	20	1	\$ 155
255	23	326765	Keystone #12	Pinal	1922 858	5S	15E	4	20	1	\$ 155
256	23	326757	Keystone #4	Pinal	1922 842	5S	15E	4	20	1	\$ 155
257	23	326758	Keystone #5	Pinal	1922 844	5S	15E	4	20	1	\$ 155
258	23	326760	Keystone #7	Pinal	1922 848	5S	15E	4	20	1	\$ 155
259	23	326761	Keystone #8	Pinal	1922 850	5S	15E	4	20	1	\$ 155
260	23	326762	Keystone #9	Pinal	1922 852	5S	15E	4	20	1	\$ 155
261	26	429669	Bumble Bee King 1	Yavapai	2014-0040521	9N	2E	5	20	1	\$ 155
262	26	429670	Bumble Bee King 2	Yavapai	2014-0040522	9N	2E	5	20	1	\$ 155
263	26	429671	Bumble Bee King 3	Yavapai	2014-0040523	9N	2E	5	20	1	\$ 155
264	26	429672	Bumble Bee King 4	Yavapai	2014-0040524	9N	2E	5	20	1	\$ 155
265	26	429673	Bumble Bee King 5	Yavapai	2014-0040525	9N	2E	5	20	1	\$ 155
266	26	429674	Bumble Bee King 6	Yavapai	2014-0040526	9N	2E	5	20	1	\$ 155
267	27	314304	Oro De Valenzuela	Yavapai	3436 378	11N	1E	14	20	1	\$ 155
268	28	364340	Mary Francis	Yavapai	3824744 4236 718	13N	1E	29	16	1	\$ 155

5,468.9 279 \$ 43,245
 279 segments x \$155 = \$ 43,245

Bureau of Land Management

PHOENIX, ARIZONA
 2017 AUG 19 P 12:46
 RECEIVED
 STATE OFFICE

268/158 R-3040163

Maint. fee

United States Department of the Interior
Bureau of Land Management
 DIV OF LANDS, MINRLS & ENERGY
 ONE N CENTRAL AVE
 PHOENIX, AZ 85004 -4427
 Phone: 602-417-9200

Receipt

No: 3940163

Transaction #: 4049817	
Date of Transaction: 08/16/2017	
CUSTOMER:	
ROADRUNNER PROSPECTORS CLUB INC PO BOX 56804 PHOENIX, AZ 85079-6804 US	

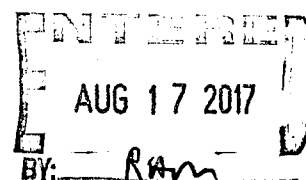
LINE #	QTY	DESCRIPTION	REMARKS	UNIT PRICE	TOTAL
1	1.00	LOCATABLE MINERALS / MINING CLAIMS- NOT NEW-UNADJUD, ONE AUTH NO. ONLY / MINING CLAIM MONEY RECEIVED CASES: AMC374513/\$43245.00	2018 MAINT (268)	- n/a -	43245.00
TOTAL:					\$43,245.00

PAYMENT INFORMATION			
1	AMOUNT:	43245.00	POSTMARKED: N/A
	TYPE:	CHECK	RECEIVED: 08/16/2017
	CHECK NO:	9257	
	NAME:	ROADRUNNER PROSPECTORS CLUB INC PO BOX 56804 PHOENIX AZ 85079-6804 US	

REMARKS

This receipt was generated by the automated BLM Collections and Billing System and is a paper representation of a portion of the official electronic record contained therein.

95198	406356	339964	313473	102389
96051	407030	348628	314304	11413
	410363	350275	314626	126534
	411385	350903	321061	130488
	427326	356380	326311	142355
	429664	356553	326754	157621
	430534	358378	326772	170911
	430611	358379	327930	174224
	433937	358379	327930	191670
	435083	362558	328302	196365
	435561	364340	328593	235841
	437448	364688	328689	236096
	437934	364820	328742	244561
	440315	365711	329013	247112
	48976	366267	329318	251042
	62606	368415	329388	254410
	64830	371350	329800	258455
	68526	371802	331232	291104
	74734	374274	331455	300332
	76950	374511	333426	
	82212	374726	338207	
	89414			



#	Map	AMC #	Claim Name	County	Cnty Recorder Data Record/Book Page	Township	Range	Section	Total Acres	20 Acre Segments	Maint. Fe
1	1	374513	Caitlin Lisa	Yavapai	4452 917	12.5, 13N	1W	23,24,35,36	20.0	1	\$ 155
2	1	374512	Cole Ryan	Yavapai	2014-0056442	12.5N	1W	24	18.5	1	\$ 155
3	1	365711	Diggens Paradise	Yavapai	3864391 4269 775	12.5N	1W	26	17.1	1	\$ 155
4	1	191670	Roadrunner #1	Yavapai	1514 754	12.5N	1W	25	12.85	1	\$ 155
5	1	191671	Roadrunner #2	Yavapai	1514 756	12.5N	1W	25	20	1	\$ 155
6	1	348628	Vira Anne 1	Yavapai	2015-0008296	12.5N	1W	27	17.3	1	\$ 155
7	1	430611	Vira Anne 2	Yavapai	2014-0008298	12.5N	1W	27	16.50	1	\$ 155
8	2	328703	Ceedee #1	Yavapai	2746 703	8N	1W	5	20	1	\$ 155
9	2	328593	Ceedee #2	Yavapai	2742 961	8N	1W	5	20	1	\$ 155
10	2	328594	Ceedee #3	Yavapai	2742 963	8N	1W	5	20	1	\$ 155
11	2	328595	Ceedee #4	Yavapai	2742 965	8N	1W	5	20	1	\$ 155
12	2	328704	Ceedee #5	Yavapai	2746 705	8N	1W	5	20	1	\$ 155
13	2	328597	Ceedee #7	Yavapai	2742 969	8N	1W	4	20	1	\$ 155
14	2	328598	Ceedee #8	Yavapai	2742 971	8N	1W	4	20	1	\$ 155
15	3	374511	Carolyn D	Yavapai	4444 69	13N	3W	29	20.0	1	\$ 155
16	3	371802	Happy Times	Yavapai	4390 621	13N	3W	29, 32	20	1	\$ 155
17	3	368415	Jacks Hideaway	Yavapai	4308 863	13N	3W	29	20	1	\$ 155
18	3	366268	Renee's Best Chance	Yavapai	4281 507	13N	3W	32	20	1	\$ 155
19	3	371803	Saddle Tramps	Yavapai	4390 622	13N	3W	29	20	1	\$ 155
20	3	366270	Stuck Duck	Yavapai	4281 506	13N	3W	32	20	1	\$ 155
21	3	371350	Wilgers Wish	Yavapai	4372 442	13N	3W	32	20	1	\$ 155
22	4	96051	JDR #1	Yavapai	1267 825	12.5N	2W	21	20	1	\$ 155
23	4	96052	JDR #2	Yavapai	1267 827	12.5N	2W	21	20	1	\$ 155
24	4	96053	JDR #3	Yavapai	1267 829	12.5N/13N	2W/2W	21/33	20	1	\$ 155
25	5	328705	Genes Dream	Yavapai	2746 707	9.5N	2E	20, 21	20	1	\$ 155
26	5	362558	Holly Marie	Yavapai	3769442 4190 312	9.5N	2E	20, 21	11.45	1	\$ 155
27	5	429703	Janet Lynn 2-1	Yavapai	2014-0040485	10N	1E	12	20	1	\$ 155
28	5	435087	Janet Lynn 2-2	Yavapai	2015-0052258	10N	1E	12, 13	15	1	\$ 155
29	5	435088	Janet Lynn 2-3	Yavapai	2015-0052259	10N	1E	12, 13	15	1	\$ 155
30	5	435569	Laura Kay 1-1	Yavapai	2015-0055540	10N	1E	12	20	1	\$ 155
31	5	435570	Laura Kay 1-2	Yavapai	2015-0055541	10N	1E	12	20	1	\$ 155
32	5	435571	Laura Kay 1-3	Yavapai	2015-0055542	10N	1E	12	20	1	\$ 155
33	5	126538	Mandala 10	Yavapai	1371 343	10N	2E	31	20	1	\$ 155
34	5	129334	Mandala 12	Yavapai	1376 706	10N	2E	30	20	1	\$ 155
35	5	157621	Mandala 14	Yavapai	1437 981	10N	2E	30	20	1	\$ 155
36	5	102389	Mandala 2 & 3	Yavapai	1293 289	10N	2E	30	20	1	\$ 155
37	5	126535	Mandala 7	Yavapai	1371 337	10N	2E	30	20	1	\$ 155
38	5	126536	Mandala 8	Yavapai	1371 339	10N	2E	30	20	1	\$ 155
39	5	126537	Mandala 9	Yavapai	1371 341	10N	2E	30	20	1	\$ 155
40	5	170911	Wednesday Hope #1	Yavapai	1467 691	10N	2E	31	20	1	\$ 155
41	5	11413	Wednesday Hope #4	Yavapai	1015 726, 1799 33, 1569 374	9.5N/10N	2E/2E	20/32	20	1	\$ 155
42	6	329388	Bad Luck	Yavapai	2780 912	12N	1W	14, 23	20	1	\$ 155
43	6	235841	Betty #4	Yavapai	1713 778	12N	1W	14	20	1	\$ 155
44	6	235842	Betty #5	Yavapai	1713 780	12N	1W	14	20	1	\$ 155
45	6	174224	Big Rock #1	Yavapai	1469 76	12N	1W	10, 11	20	1	\$ 155
46	6	174225	Big Rock #2	Yavapai	1469 78	12N	1W	10	20	1	\$ 155
47	6	236096	Gary's Place #1A	Yavapai	1714 193	12N	1W	14	20	1	\$ 155
48	6	329390	Good Luck	Yavapai	2780 916	12N	1W	23, 24	20	1	\$ 155
49	6	329391	Great Luck	Yavapai	2780 918	12N	1W	24	20	1	\$ 155
50	6	329389	No Luck	Yavapai	2780 914	12N	1W	23	20	1	\$ 155
51	6	364821	Ray's Right Place	Yavapai	3837647 4247 553	12N	1W	24	17.0	1	\$ 155
52	7	366267	Cobi's Gold	Yavapai	4281 505	11.5N	1E	19	20	1	\$ 155
53	7	427326	Rexs' Place	Yavapai	4914 661	11.5N	1E	30	20	1	\$ 155
54	7	366269	Rough Road	Yavapai	4281 503	11.5N	1E	30	20	1	\$ 155
55	7	366271	Tegan's Bank	Yavapai	4281 504	11.5N	1E	30	20	1	\$ 155
56	7	89420	Wolf #1	Yavapai	0961 673, 90 203541	11.5N	1E	31	20	1	\$ 155
57	7	89421	Wolf #2	Yavapai	0961 674, 2207 41	11.5N	1E	31	20	1	\$ 155
58	7	89422	Wolf #3	Yavapai	0961 675, 2207 41	11.5N	1E	31	20	1	\$ 155
59	7	89423	Wolf #4	Yavapai	0961 676, 2207 41	11.5N/11N	1E/1E	31/6	20	1	\$ 155
60	7	300332	Wolf #5	Yavapai	2208 526	11.5N	1E	31	20	1	\$ 155
61	7	300333	Wolf #6	Yavapai	2208 524	11N	1E	5, 6	20	1	\$ 155
62	8	82213	Bean Bag #1	Yavapai	0965 338, 1252 276	12N	1W	28	20	1	\$ 155
63	8	435561	Bean Bag 2-1	Yavapai	2015-0055543	10N	2E	30	20	1	\$ 155
64	8	435562	Bean Bag 2-2	Yavapai	2015-0055544	10N	2E	30	20	1	\$ 155
65	8	328605	Burro #1	Yavapai	2742 987	12N	1W	33	20	1	\$ 155
66	8	328606	Burro #2	Yavapai	2742 985	11N	1W	4	20	1	\$ 155
67	8	142356	Donkey Mine #4	Yavapai	1422 292	12N	1W	33	20	1	\$ 155
68	8	437451	Goodwin 1-1	Yavapai	2016-0019094	12N	1W	28, 33	20	1	\$ 155
69	8	437452	Goodwin 1-2	Yavapai	2016-0019093	12N	1W	33	20	1	\$ 155
70	8	329318	Mercer's Place	Yavapai	2777 216, 3288 700	11N	1W	4	20	1	\$ 155
71	8	76951	Merciful Heavens #2	Yavapai	1329 344	12N/11N	1W/1W	33/4	20	1	\$ 155
72	8	313473	Patriot 1	Yavapai	2347 704	11N	1W	4	20	1	\$ 155

RRPC Claims List as of January 1, 2017

\$ 43,245

279 \$ 155.00

#	Map	AMC #	Claim Name	County	Cnty Recorder Data Record/Book Page	Township	Range	Section	Total Acres	20 Acre Segments	Maint. Fee
73	8	313474	Patriot 2	Yavapai	2347 706	11N	1W	3, 4	20	1	\$ 155
74	8	313475	Patriot 3	Yavapai	2347 708	11N	1W	3	20	1	\$ 155
75	8	313476	Patriot 4	Yavapai	2347 710	11N	1W	3	20	1	\$ 155
76	8	313477	Patriot 5	Yavapai	2347 712	11N	1W	3	20	1	\$ 155
77	8	130489	Protecto 2	Yavapai	1381 826	12N	1W	33	20	1	\$ 155
78	9	329394	Bonny	Yavapai	2780 924	12N	1W	30	20	1	\$ 155
79	9	331455	Chris #1	Yavapai	2919 631	12N	2W	36	20.0	1	\$ 155
80	9	329392	Clinton	Yavapai	2780 920	12N/12N	1W/2W	30/25	20	1	\$ 155
81	9	329393	Clyde	Yavapai	2780 922	12N/12N	1W/2W	30/25	20	1	\$ 155
82	9	356382	Ducbill #1	Yavapai	27429 1402 63	12N	1W	17	20	1	\$ 155
83	9	356383	Ducbill #2	Yavapai	27430 1402 65	12N	1W	17	20	1	\$ 155
84	9	95198	Gold Palace I	Yavapai	1256 447	12N	1W	19	20	1	\$ 155
85	9	95199	Gold Palace II	Yavapai	1256 450	12N	1W	19	20	1	\$ 155
86	9	95200	Gold Palace III	Yavapai	1256 453	12N	1W	19	20	1	\$ 155
87	9	95201	Gold Palace IV	Yavapai	1256 456	12N	1W	19	20	1	\$ 155
88	9	95202	Gold Palace V	Yavapai	1256 459	12N	1W	19	20	1	\$ 155
89	9	95203	Gold Palace VI	Yavapai	1256 462	12N	1W	19	20	1	\$ 155
90	9	95204	Gold Palace VII	Yavapai	1256 465	12N	1W	19	20	1	\$ 155
91	9	95205	Gold Palace VIII	Yavapai	1256 468	12N	1W	30	20	1	\$ 155
92	9	358378	Hidden Treasure	Yavapai	3633816 4076 796	12N/12N	1W/2W	30,31/25,36	20	1	\$ 155
93	10	358379	Aquarius Ext. West #1	Yavapai	3633817 4076 797	10N	2E	18	20	1	\$ 155
94	10	358380	Aquarius Ext. West #2	Yavapai	3633818 4076 798	10N	2E	18	20	1	\$ 155
95	10	358381	Aquarius Ext. West #3	Yavapai	3633819 4076 799	10N	2E	18	20	1	\$ 155
96	10	358382	Aquarius Ext. West #4	Yavapai	3633820 4076 800	10N	2E	18	20	1	\$ 155
97	10	48976	Aquarius #1	Yavapai	0801 192 ***	10N	2E	7	20	1	\$ 155
98	10	62606	Aquarius #2	Yavapai	1001 437	10N	2E	7	20	1	\$ 155
99	10	48977	Aquarius #3	Yavapai	0801 194 ***	10N	2E	7, 18	20	1	\$ 155
100	10	435083	Aquarius Extension 1	Yavapai	2015-0052260	10N	2E	18	20	1	\$ 155
101	10	435084	Aquarius Extension 2	Yavapai	2015-0052261	10N	2E	18	20	1	\$ 155
102	10	435085	Aquarius Extension 3	Yavapai	2015-0052262	10N	2E	18	20	1	\$ 155
103	10	435086	Aquarius Extension 4	Yavapai	2015-0052263	10N	2E	18	20	1	\$ 155
104	11	254412	Hinny	Yavapai	4069 601, 1341 96, 1807 656	11N	1E	34	16.22	1	\$ 155
105	11	254410	Jackass	Yavapai	4069 605	11N	1E	34, 35	19.97	1	\$ 155
106	11	254411	Jenney	Yavapai	4069 602	11N	1E	34	20	1	\$ 155
107	11	328742	Red Bird #11	Yavapai	2754 072	10N	1E	1	40	2	\$ 310
108	11	74736	Sharon Lee #3	Yavapai	0912 399	10N	1E	2	20	1	\$ 155
109	11	429736	Sharon Lee 1-1	Yavapai	2014-0040492	11N	1E	35, 36	20	1	\$ 155
110	11	429737	Sharon Lee 1-2	Yavapai	2014-0040493	11N	1E	35, 36	20	1	\$ 155
111	11	429738	Sharon Lee 1-3	Yavapai	2014-0040494	11N	1E	35, 36	20	1	\$ 155
112	11	429739	Sharon Lee 1-4	Yavapai	2014-0040495	11N	1E	35, 36	20	1	\$ 155
113	11	429740	Sharon Lee 2-1	Yavapai	2014-0040496	11N	1E	35	20	1	\$ 155
114	11	429741	Sharon Lee 2-2	Yavapai	2014-0040497	11N	1E	35	20	1	\$ 155
115	11	429742	Sharon Lee 2-3	Yavapai	2014-0040498	11N	1E	35	20	1	\$ 155
116	11	429743	Sharon Lee 4-1	Yavapai	2014-0040499	10N	1E	1, 2	20	1	\$ 155
117	11	429744	Sharon Lee 4-2	Yavapai	2014-0040500	10N	1E	1, 2	20	1	\$ 155
118	11	429745	Sharon Lee 4-3	Yavapai	2014-0040501	10N	1E	1, 2	20	1	\$ 155
119	11	429746	Sharon Lee 4-4	Yavapai	2014-0040502	10N	1E	1, 2	20	1	\$ 155
120	11	429747	Sharon Lee 4-5	Yavapai	2014-0040503	10N	1E	1, 2	20	1	\$ 155
121	11	429748	Sharon Lee 4-6	Yavapai	2014-0040504	10N	1E	1, 2	20	1	\$ 155
122	12	326313	Carrie #3	Maricopa	93 0174160	7N	3W	30	20	1	\$ 155
123	12	326314	Carrie #4	Maricopa	93 0174159	7N	3W	30	20	1	\$ 155
124	12	437934	Carrie 1-1	Maricopa	2016-0242927	7N	3W	31	20	1	\$ 155
125	12	437449	Carrie 1-2	Maricopa	2016-0222160	7N	3W	31	20	1	\$ 155
126	12	326312	Carrie 2-1	Maricopa	2016-0222161	7N	3W	31	20	1	\$ 155
127	12	437450	Carrie 2-2	Maricopa	2016-0222162	7N	3W	31	20	1	\$ 155
128	12	291104	Cas #2	Maricopa	92 0366284, 88 598383	7N	3W	29	20	1	\$ 155
129	12	410363	Cass # 10	Maricopa	11 0735632	7N	3W	29	20	1	\$ 155
130	12	328698	Cass No. 4	Maricopa	93 0885578	7N	3W	29	20	1	\$ 155
131	12	328699	Cass No. 5	Maricopa	93 0885577	7N	3W	29	20	1	\$ 155
132	12	328700	Cass No. 6	Maricopa	93 0885576	7N	3W	29	20	1	\$ 155
133	12	328701	Cass No. 7	Maricopa	93 0885575	7N	3W	29	20	1	\$ 155
134	12	328702	Cass No. 8	Maricopa	93 0885574	7N	3W	29	20	1	\$ 155
135	12	406356	Cass No. 9	Maricopa	11 0623988	7N	3W	29	20	1	\$ 155
136	12	374275	Charles' Dream	Maricopa	06 1491112	7N	3W	20	20	1	\$ 155
137	12	329800	Gypsy Moth 1	Maricopa	94 0218517	7N	3W	21	20	1	\$ 155
138	12	329801	Gypsy Moth 2	Maricopa	94 0218518	7N	3W	21	20	1	\$ 155
139	12	326325	Jake #3	Maricopa	93 0174145	7N	3W	29	20	1	\$ 155
140	12	429695	Jake 1-1	Maricopa	2014-0584266	7N	3W	29	20	1	\$ 155
141	12	429696	Jake 1-2	Maricopa	2014-0584267	7N	3W	29	20	1	\$ 155
142	12	429697	Jake 1-3	Maricopa	2014-0584268	7N	3W	29	20	1	\$ 155
143	12	429698	Jake 1-4	Maricopa	2014-0584269	7N	3W	29	20	1	\$ 155
144	12	429699	Jake 2-1	Maricopa	2014-0584270	7N	3W	29	20	1	\$ 155

2017 AUG 16 PM 12:46
 PHOENIX, ARIZONA
 \$ 155

#	Map	AMC #	Claim Name	County	Cnty Recorder Data Record/Book Page	Township	Range	Section	Total Acres	20 Acre Segments	Maint. Fe
145	12	429700	Jake 2-2	Maricopa	2014-0584271	7N	3W	29	20	1	\$ 15
146	12	429701	Jake 2-3	Maricopa	2014-0584272	7N	3W	29	20	1	\$ 15
147	12	429702	Jake 2-4	Maricopa	2014-0584273	7N	3W	29	20	1	\$ 15
148	12	333426	La Siesta #1	Maricopa	95 0185054	7N	3W	30	20	1	\$ 15
149	12	333427	La Siesta #3	Maricopa	95 0185055	7N	3W	30	20	1	\$ 15
150	12	374274	Lori's Place	Maricopa	06 1491113	7N	3W	20	20	1	\$ 15
151	12	326319	Pat	Maricopa	93 0174152	7N	3W	31	20	1	\$ 15
152	12	326316	Pennyweight #2	Maricopa	93 0174156	7N	3W	29	20	1	\$ 15
153	12	326315	Pennyweight 1-1	Maricopa	2016-0222163	7N	3W	29	20	1	\$ 15
154	12	437453	Pennyweight 1-2	Maricopa	2016-0222164	7N	3W	29	20	1	\$ 15
155	12	326327	Pilgrim #1	Maricopa	93 0174153	7N	3W	31	20	1	\$ 15
156	12	429724	Randy B 1	Maricopa	2014-0584262	7N	3W	30	20	1	\$ 15
157	12	429725	Randy B 2	Maricopa	2014-0584263	7N	3W	30	20	1	\$ 15
158	12	429726	Randy B 3	Maricopa	2014-0584264	7N	3W	30	20	1	\$ 15
159	12	429727	Randy B 4	Maricopa	2014-0584265	7N	3W	30	20	1	\$ 15
160	12	326772	Range Bull # 1	Maricopa	93 0362063	7N	3W	21	20	1	\$ 15
161	12	247112	Sando	Maricopa	85 0559653	7N	3W	28	20	1	\$ 15
162	13	350275	Gold Bug	Maricopa	98 0535738	6N	6W	26	20	1	\$ 15
163	13	350276	Gold Master	Maricopa	98 0535739	6N	6W	26	20	1	\$ 15
164	13	350277	Lobo	Maricopa	98 0535740	6N	6W	26	20	1	\$ 15
165	13	350278	Mine Lab	Maricopa	98 0535741	6N	6W	26	20	1	\$ 15
166	13	331233	Red Basin #1	Maricopa	14 0184527	6N	6W	26	145.45	8	\$ 1,24
167	13	350279	Webster Mine	Maricopa	98 0535742	6N	6W	26	20	1	\$ 15
168	13	350280	Whistler	Maricopa	98 0535743	6N	6W	26	20	1	\$ 15
169	13	350281	Wickenburg	Maricopa	98 0535744	6N	6W	26	20	1	\$ 15
170	14	321061	Lefty #2	Yavapai	2479 560	8N	1E	30	20	1	\$ 15
171	14	314631	RR-Humbug #3	Yavapai	2360 845	8N	1E	29, 30	20	1	\$ 15
172	14	429728	RR-Humbug 1-1	Yavapai	2014-0040505	8N	1E	31	20	1	\$ 15
173	14	429729	RR-Humbug 1-2	Yavapai	2014-0040506	8N	1E	31	20	1	\$ 15
174	14	429730	RR-Humbug 1-3	Yavapai	2014-0040507	8N	1E	31	20	1	\$ 15
175	14	429731	RR-Humbug 1-4	Yavapai	2014-0040508	8N	1E	31	20	1	\$ 15
176	14	429732	RR-Humbug 1-5	Yavapai	2014-0040509	8N	1E	31	20	1	\$ 15
177	14	429733	RR-Humbug 1-6	Yavapai	2014-0040510	8N	1E	31	20	1	\$ 15
178	14	429734	RR-Humbug 2-1	Yavapai	2014-0040511	8N	1E	31	20	1	\$ 15
179	14	429735	RR-Humbug 2-2	Yavapai	2014-0040512	8N	1E	31	20	1	\$ 15
180	15	244561	Gold Dust #2	Yavapai	1781 510	11N	3E	30	6.88	1	\$ 15
181	15	196365	Turkey Buzzard #1	Yavapai	1529 712	11N	3E	30	13.77	1	\$ 15
182	15	258456	Turkey Buzzard #2	Yavapai	1838 872	11N	3E	30	20	1	\$ 15
183	15	258457	Turkey Buzzard #3	Yavapai	1838 874	11N	3E	30	20	1	\$ 15
184	15	258458	Turkey Buzzard #4	Yavapai	1838 876	11N	3E	30	20	1	\$ 15
185	15	258455	Turkey Buzzard Ext.	Yavapai	1838 870	11N	3E	30	10	1	\$ 15
186	16	430534	Lucky Eight	Maricopa	2015-0077601	7N	5W	3	20	1	\$ 15
187	16	430535	Lucky Nine	Maricopa	2015-0077602	7N	5W	3	20	1	\$ 15
188	16	411385	Lucky Seven	Maricopa	2015-0047844	7N	5W	3	20	1	\$ 15
189	17	407030	Carols Corner	Maricopa	11 0623989	7N	3W	18	20	1	\$ 15
190	17	410364	Golden Sands	Maricopa	11 073563	7N	3W	18	20	1	\$ 15
191	17	429716	Ocotillo 1-1	Maricopa	2014-0584274	7N	3W	17, 20	20	1	\$ 15
192	17	429717	Ocotillo 1-2	Maricopa	2014-0584275	7N	3W	17, 20	20	1	\$ 15
193	17	429718	Ocotillo 1-3	Maricopa	2014-0584276	7N	3W	17, 20	20	1	\$ 15
194	17	429719	Ocotillo 1-4	Maricopa	2014-0584277	7N	3W	17, 20	20	1	\$ 15
195	17	429720	Ocotillo 2-1	Maricopa	2014-0584278	7N	3W	17, 18	20	1	\$ 15
196	17	429721	Ocotillo 2-2	Maricopa	2014-0584279	7N	3W	17, 18	20	1	\$ 15
197	17	429722	Ocotillo 2-3	Maricopa	2014-0584280	7N	3W	17, 18	20	1	\$ 15
198	17	429723	Ocotillo 2-4	Maricopa	2014-0584281	7N	3W	17, 18	20	1	\$ 15
199	17	327930	Red Bird # 7	Maricopa	93 0897433	7N	3W	17	20	1	\$ 15
200	17	327931	Red Bird # 8	Maricopa	93 0897432	7N	3W	20	20	1	\$ 15
201	17	328302	Red Bird # 9	Maricopa	93 0897431	7N	3W	17	20	1	\$ 15
202	17	374726	Roslyn's Roost	Maricopa	06 1445012	7N	3W	17	20	1	\$ 15
203	19	326322	Double R	Maricopa	12 0735517	6N	4W	12	80	4	\$ 620
204	19	329020	RR #1	Maricopa	94 0021782	6N	4W	1	20	1	\$ 15
205	19	329021	RR #2	Maricopa	94 0021783	6N	4W	1	20	1	\$ 15
206	19	329022	RR #3	Maricopa	94 0021784	6N	4W	1	20	1	\$ 15
207	19	329023	RR #4	Maricopa	94 0021785	6N	4W	1	20	1	\$ 15
208	19	339964	RR #5	Maricopa	96 0488373	6N	4W	1	20	1	\$ 15
209	19	339965	RR #6	Maricopa	96 0488374	6N	4W	1	20	1	\$ 15
210	19	364688	RR #7	Maricopa	05 0477984	6N	4W	1	20	1	\$ 15
211	19	364689	RR #8	Maricopa	05 0477985	6N	4W	1	20	1	\$ 15
212	19	338207	Seven Grand	Maricopa	98 0139764	7N	4W	25	20	1	\$ 15
213	20	356553	Au Sum 1	Yavapai	2016-0019091	10N	2E	29,32	20	1	\$ 15
214	20	437448	Au Sum 2	Yavapai	2016-0019092	10N	2E	28,33	20	1	\$ 15
215	21	64830	Catclaw	Yavapai	0912 239	9N	4W	6	20	1	\$ 15
216	21	350910	Devils Nest AU 12	Yavapai	3620 62	9N	4W	6	20	1	\$ 15

#	Map	AMC #	Claim Name	County	Cnty Recorder Data Record/Book Page	Township	Range	Section	Total Acres	20 Acre Segments	Maint. Fe
217	21	350907	Devils Nest AU 9	Yavapai	3620 60	9N	4W	6	20	1	\$ 155
218	21	251044	Faith #3	Yavapai	1812 836	9N	5W	13	20	1	\$ 155
219	21	350905	King Duck II	Yavapai	4247 552	10N/9N	4W/4W	31/6	20	1	\$ 155
220	21	429708	Leave No Holes 1	Yavapai	2014-0040513	9N	5W	12	20	1	\$ 155
221	21	429709	Leave No Holes 2	Yavapai	2014-0040514	9N	5W	12	20	1	\$ 155
222	21	429710	Leave No Holes 3	Yavapai	2014-0040515	9N	5W	12	20	1	\$ 155
223	21	429711	Leave No Holes 4	Yavapai	2014-0040516	9N	5W	12	20	1	\$ 155
224	21	429712	Leave No Holes 5	Yavapai	2014-0040517	9N	5W	12	20	1	\$ 155
225	21	429713	Leave No Holes 6	Yavapai	2014-0040518	9N	5W	12	20	1	\$ 155
226	21	429714	Leave No Holes 7	Yavapai	2014-0040519	9N	5W	12	20	1	\$ 155
227	21	429715	Leave No Holes 8	Yavapai	2014-0040520	9N	5W	12	20	1	\$ 155
228	21	350906	Little Terry	Yavapai	4247 551	9N	4W	6	20	1	\$ 155
229	21	251047	Lords Blessing	Yavapai	1803 415	9N	5W	13	20	1	\$ 155
230	21	68531	Thomason	Yavapai	0121 511	9N	4W	7	20	1	\$ 155
231	22	429675	C-6 Placer 1	La Paz	2014-02950	4N	20W	23	20	1	\$ 155
232	22	429676	C-6 Placer 2	La Paz	2014-02951	4N	20W	23	20	1	\$ 155
233	22	429677	C-6 Placer 3	La Paz	2014-02952	4N	20W	23	20	1	\$ 155
234	22	429678	CD7 Placer 1	La Paz	2014-02953	4N	20W	15	20	1	\$ 155
235	22	429679	CD7 Placer 2	La Paz	2014-02954	4N	20W	15	20	1	\$ 155
236	22	429680	CD7 Placer 3	La Paz	2014-02955	4N	20W	15	20	1	\$ 155
237	22	429681	CD7 Placer 4	La Paz	2014-02956	4N	20W	14	20	1	\$ 155
238	22	429682	CD7 Placer 5	La Paz	2014-02957	4N	20W	23	20	1	\$ 155
239	22	429683	CD7 Placer 6	La Paz	2014-02958	4N	20W	23	20	1	\$ 155
240	22	429691	D6 Placer 1	La Paz	2014-02946	4N	20W	26	20	1	\$ 155
241	22	429692	D6 Placer 2	La Paz	2014-02947	4N	20W	26	20	1	\$ 155
242	22	433937	Diablo Placer 1	La Paz	2015-03207	4N	20W	24	20	1	\$ 155
243	22	433938	Diablo Placer 2	La Paz	2015-03208	4N	20W	24	20	1	\$ 155
244	22	433939	Diablo Placer 3	La Paz	2015-03209	4N	20W	23	20	1	\$ 155
245	22	433940	Diablo Placer 4	La Paz	2015-03210	4N	20W	23	20	1	\$ 155
246	22	440315	Diablo Placer 5	La Paz	2016-03907	4N	20W	23	20	1	\$ 155
247	22	440316	Diablo Placer 6	La Paz	2016-03908	4N	20W	23	20	1	\$ 155
248	22	440317	Diablo Placer 7	La Paz	2016-03909	4N	20W	23	20	1	\$ 155
249	22	440318	Diablo Placer 8	La Paz	2016-03910	4N	20W	23	10	1	\$ 155
250	22	435566	Eastside Placer 1	La Paz	2015-04234	4N	20W	23	20	1	\$ 155
251	22	435567	Eastside Placer 2	La Paz	2015-04236	4N	20W	23	20	1	\$ 155
252	22	435568	Eastside Placer 3	La Paz	2015-04235	4N	20W	23	10	1	\$ 155
253	23	326754	Keystone #1	Pinal	1922 836	5S	15E	4	20	1	\$ 155
254	23	326764	Keystone #11	Pinal	1922 856	5S	15E	4	20	1	\$ 155
255	23	326765	Keystone #12	Pinal	1922 858	5S	15E	4	20	1	\$ 155
256	23	326757	Keystone #4	Pinal	1922 842	5S	15E	4	20	1	\$ 155
257	23	326758	Keystone #5	Pinal	1922 844	5S	15E	4	20	1	\$ 155
258	23	326760	Keystone #7	Pinal	1922 848	5S	15E	4	20	1	\$ 155
259	23	326761	Keystone #8	Pinal	1922 850	5S	15E	4	20	1	\$ 155
260	23	326762	Keystone #9	Pinal	1922 852	5S	15E	4	20	1	\$ 155
261	26	429669	Bumble Bee King 1	Yavapai	2014-0040521	9N	2E	5	20	1	\$ 155
262	26	429670	Bumble Bee King 2	Yavapai	2014-0040522	9N	2E	5	20	1	\$ 155
263	26	429671	Bumble Bee King 3	Yavapai	2014-0040523	9N	2E	5	20	1	\$ 155
264	26	429672	Bumble Bee King 4	Yavapai	2014-0040524	9N	2E	5	20	1	\$ 155
265	26	429673	Bumble Bee King 5	Yavapai	2014-0040525	9N	2E	5	20	1	\$ 155
266	26	429674	Bumble Bee King 6	Yavapai	2014-0040526	9N	2E	5	20	1	\$ 155
267	27	314304	Oro De Valenzuela	Yavapai	3436 378	11N	1E	14	20	1	\$ 155
268	28	364340	Mary Francis	Yavapai	3824744 4236 718	13N	1E	29	16	1	\$ 155

5,468.9 279 \$ 43,245
 279 segments x \$155 = \$ 43,245

Bureau of Land Management

PHOENIX, ARIZONA

2017 AUG 16 P 12:46

RECEIVED
 STATE OFFICE

268/158 R... 3940163

Maint. fee

United States Department of the Interior
Bureau of Land Management
 DIV OF LANDS, MINRLS & ENERGY
 ONE N CENTRAL AVE
 PHOENIX, AZ 85004 -4427
 Phone: 602-417-9200

Receipt

No: 3940163

Transaction #: 4049817	
Date of Transaction: 08/16/2017	
CUSTOMER:	
ROADRUNNER PROSPECTORS CLUB INC PO BOX 56804 PHOENIX, AZ 85079-6804 US	

LINE #	QTY	DESCRIPTION	REMARKS	UNIT PRICE	TOTAL
1	1.00	LOCATABLE MINERALS / MINING CLAIMS- NOT NEW-UNADJUD, ONE AUTH NO. ONLY / MINING CLAIM MONEY RECEIVED CASES: AMC374513/\$43245.00	2018 MAINT (268)	- n/a -	43245.00
TOTAL:					\$43,245.00

PAYMENT INFORMATION			
1	AMOUNT:	43245.00	POSTMARKED: N/A
	TYPE:	CHECK	RECEIVED: 08/16/2017
	CHECK NO:	9257	
	NAME:	ROADRUNNER PROSPECTORS CLUB INC PO BOX 56804 PHOENIX AZ 85079-6804 US	

REMARKS

This receipt was generated by the automated BLM Collections and Billing System and is a paper representation of a portion of the official electronic record contained therein.

11413 102389 247112 328593
 4800 126534 251042 328689
 62606 129334 254410 328742
 64830 130488 258455 329013
 68526 142355 291104 329318
 74734 157621 300332 329388
 76950 170911 313473 329800
 82212 174224 314626 331232
 89414 191670 321061 331455
 95198 196365 326311 333426
 96051 235841 326754 338207
 244561 236096 327772 339964
 328302 327930 348628
 350275
 350903

MAINTENANCE FEE PAYMENT

Claimant Name: Roadrunner Prospectors' Club
 Address: PO Box 56804
 City: Phoenix State: AZ Zip: 85079
 Telephone: 602 274-2521
 E-mail address: rrpc-office@roadrunnergold.com
 Signature: _____

Check here if this is a change of address.

BLM
Date
Stamp

2016 AUG 10 P 1:19

PHOENIX, ARIZONA

RECEIVED
BLM AZ STATE OFFICE

356380
356553
358378
358379
362558
364340
364688
364820
365711
366267
368415
371350
371802
374274
374511

LINE NO.	AMC NUMBER	CLAIM/SITE NAME	COUNTY RECORDER DATA (If available)	TWP	RNG	SEC
1						
2						
3						
4						
5		(SEE ATTACHED)				
6						
7						
8						
9						
10						

374726
406356
407030
410363
411385
427324
429664
430534
430611
433937
435083
435561
437448
437934

List additional claims on Form MCF114.

20-ac No. of Claims*: 267 x \$155 = \$41385
 Check No.: 9073 Init. EL
 Receipt No.: 3625476
 For BLM Use Only

Bureau of Land Management
 Arizona State Office
www.blm.gov/az/

* \$155 per lode mining claim, mill site, or tunnel site; and \$155 for each 20 acres or portion thereof for each placer mining claim.

Form: MCF112
 Revised July 2014

ENTERED
 AUG 12 2016
 BY: [Signature]

This form is available from the Arizona Geological Survey and may be reproduced.

RRPC Master Lists List as of August, 2016

\$ 43,090
\$ 155.00

278

Seq. #	AMC #	Claim Name	County	Cnty Recorder Data Record/Book Page	Township	Range	Section	Total Acres	20 Acre Segments	Maint. Fee
1	11413	Wednesday Hope #4	Yavapai	1015 726, 1799 33, 1569 374	9.5N/10N	2E/2E	20/32	20	1	\$ 155
2	48976	Aquarius #1	Yavapai	0801 192 ***	10N	2E	7	20	1	\$ 155
3	48977	Aquarius #3	Yavapai	0801 194 ***	10N	2E	7, 18	20	1	\$ 155
4	62606	Aquarius #2	Yavapai	1001 437	10N	2E	7	20	1	\$ 155
5	64830	Catclaw	Yavapai	0912 239	9N	4W	6	20	1	\$ 155
6	68531	Thomason	Yavapai	0121 511	9N	4W	7	20	1	\$ 155
7	74736	Sharon Lee #3	Yavapai	0912 399	10N	1E	2	20	1	\$ 155
8	76951	Merciful Heavens #2	Yavapai	1329 344	12N/11N	1W/1W	33/4	20	1	\$ 155
9	82213	Bean Bag #1	Yavapai	0965 338, 1252 276	12N	1W	28	20	1	\$ 155
10	89420	Wolf #1	Yavapai	0961 673, 90 203541	11.5N	1E	31	20	1	\$ 155
11	89421	Wolf #2	Yavapai	0961 674, 2207 41	11.5N	1E	31	20	1	\$ 155
12	89422	Wolf #3	Yavapai	0961 675, 2207 41	11.5N	1E	31	20	1	\$ 155
13	89423	Wolf #4	Yavapai	0961 676, 2207 41	11.5N/11N	1E/1E	31/6	20	1	\$ 155
14	95198	Gold Palace I	Yavapai	1256 447	12N	1W	19	20	1	\$ 155
15	95199	Gold Palace II	Yavapai	1256 450	12N	1W	19	20	1	\$ 155
16	95200	Gold Palace III	Yavapai	1256 453	12N	1W	19	20	1	\$ 155
17	95201	Gold Palace IV	Yavapai	1256 456	12N	1W	19	20	1	\$ 155
18	95202	Gold Palace V	Yavapai	1256 459	12N	1W	19	20	1	\$ 155
19	95203	Gold Palace VI	Yavapai	1256 462	12N	1W	19	20	1	\$ 155
20	95204	Gold Palace VII	Yavapai	1256 465	12N	1W	19	20	1	\$ 155
21	95205	Gold Palace VIII	Yavapai	1256 468	12N	1W	30	20	1	\$ 155
22	96051	JDR #1	Yavapai	1267 825	12.5N	2W	21	20	1	\$ 155
23	96052	JDR #2	Yavapai	1267 827	12.5N	2W	21	20	1	\$ 155
24	96053	JDR #3	Yavapai	1267 829	12.5N/13N	2W/2W	21/33	20	1	\$ 155
25	102389	Mandala 2 & 3	Yavapai	1293 289	10N	2E	30	20	1	\$ 155
26	126535	Mandala 7	Yavapai	1371 337	10N	2E	30	20	1	\$ 155
27	126536	Mandala 8	Yavapai	1371 339	10N	2E	30	20	1	\$ 155
28	126537	Mandala 9	Yavapai	1371 341	10N	2E	30	20	1	\$ 155
29	126538	Mandala 10	Yavapai	1371 343	10N	2E	31	20	1	\$ 155
30	129334	Mandala 12	Yavapai	1376 706	10N	2E	30	20	1	\$ 155
31	130489	Protecto 2	Yavapai	1381 826	12N	1W	33	20	1	\$ 155
32	142356	Donkey Mine #4	Yavapai	1422 292	12N	1W	33	20	1	\$ 155
33	157621	Mandala 14	Yavapai	1437 981	10N	2E	30	20	1	\$ 155
34	170911	Wednesday Hope #1	Yavapai	1467 691	10N	2E	31	20	1	\$ 155
35	174224	Big Rock #1	Yavapai	1469 76	12N	1W	10, 11	20	1	\$ 155
36	174225	Big Rock #2	Yavapai	1469 78	12N	1W	10	20	1	\$ 155
37	191670	Roadrunner #1	Yavapai	1514 754	12.5N	1W	25	12.85	1	\$ 155
38	191671	Roadrunner #2	Yavapai	1514 756	12.5N	1W	25	20	1	\$ 155
39	196365	Turkey Buzzard #1	Yavapai	1529 712	11N	3E	30	13.77	1	\$ 155
40	235841	Betty #4	Yavapai	1713 778	12N	1W	14	20	1	\$ 155
41	235842	Betty #5	Yavapai	1713 780	12N	1W	14	20	1	\$ 155
42	236096	Gary's Place #1A	Yavapai	1714 193	12N	1W	14	20	1	\$ 155
43	244561	Gold Dust #2	Yavapai	1781 510	11N	3E	30	6.88	1	\$ 155
44	247112	Sando	Maricopa	85 0559653	7N	3W	28	20	1	\$ 155
45	251044	Faith #3	Yavapai	1812 836	9N	5W	13	20	1	\$ 155
46	251047	Lords Blessing	Yavapai	1803 415	9N	5W	13	20	1	\$ 155
47	254410	Jackass	Yavapai	4069 605	11N	1E	34, 35	19.97	1	\$ 155
48	254411	Jenney	Yavapai	4069 602	11N	1E	34	20	1	\$ 155
49	254412	Hinny	Yavapai	4069 601, 1341 96, 1807 656	11N	1E	34	16.22	1	\$ 155
50	258455	Turkey Buzzard Ext.	Yavapai	1838 870	11N	3E	30	10	1	\$ 155
51	258456	Turkey Buzzard #2	Yavapai	1838 872	11N	3E	30	20	1	\$ 155
52	258457	Turkey Buzzard #3	Yavapai	1838 874	11N	3E	30	20	1	\$ 155
53	258458	Turkey Buzzard #4	Yavapai	1838 876	11N	3E	30	20	1	\$ 155
54	291104	Cas #2	Maricopa	92 0366284, 88 598383	7N	3W	29	20	1	\$ 155
55	300332	Wolf #5	Yavapai	2208 526	11.5N	1E	31	20	1	\$ 155
56	300333	Wolf #6	Yavapai	2208 524	11N	1E	5, 6	20	1	\$ 155
57	313473	Patriot 1	Yavapai	2347 704	11N	1W	4	20	1	\$ 155
58	313474	Patriot 2	Yavapai	2347 706	11N	1W	3, 4	20	1	\$ 155
59	313475	Patriot 3	Yavapai	2347 708	11N	1W	3	20	1	\$ 155
60	313476	Patriot 4	Yavapai	2347 710	11N	1W	3	20	1	\$ 155
61	313477	Patriot 5	Yavapai	2347 712	11N	1W	3	20	1	\$ 155
62	314304	Oro De Valenzuela	Yavapai	3436 378	11N	1E	14	20	1	\$ 155
63	314631	RR-Humbug #3	Yavapai	2360 845	8N	1E	29, 30	20	1	\$ 155
64	321061	Lefty #2	Yavapai	2479 560	8N	1E	30	20	1	\$ 155
65	326312	Carrie 2-1	Maricopa	2016-0222161	7N	3W	31	20	1	\$ 155
66	326313	Carrie #3	Maricopa	93 0174160	7N	3W	30	20	1	\$ 155
67	326314	Carrie #4	Maricopa	93 0174159	7N	3W	30	20	1	\$ 155
68	326315	Pennyweight 1-1	Maricopa	2016-0222163	7N	3W	29	20	1	\$ 155
69	326316	Pennyweight #2	Maricopa	93 0174156	7N	3W	29	20	1	\$ 155
70	326319	Pat	Maricopa	93 0174152	7N	3W	29	20	1	\$ 155

RECEIVED
2016 AUG 10 PM 1:19
COUNTY CLERK'S OFFICE
YAVAPAI COUNTY

RRPC Master Plans List as of August, 2016

\$ 43,090

278 \$ 155.00

Seq. #	AMC #	Claim Name	County	Cnty Recorder Data Record/Book Page	Township	Range	Section	Total Acres	20 Acre Segments	Maint. Fee
71	326322	Double R	Maricopa	12 0735517	6N	4W	12	80	4	\$ 620
72	326325	Jake #3	Maricopa	93 0174145	7N	3W	29	20	1	\$ 155
73	326327	Pilgrim #1	Maricopa	93 0174153	7N	3W	31	20	1	\$ 155
74	326754	Keystone #1	Pinal	1922 836	5S	15E	4	20	1	\$ 155
75	326757	Keystone #4	Pinal	1922 842	5S	15E	4	20	1	\$ 155
76	326758	Keystone #5	Pinal	1922 844	5S	15E	4	20	1	\$ 155
77	326760	Keystone #7	Pinal	1922 848	5S	15E	4	20	1	\$ 155
78	326761	Keystone #8	Pinal	1922 850	5S	15E	4	20	1	\$ 155
79	326762	Keystone #9	Pinal	1922 852	5S	15E	4	20	1	\$ 155
80	326764	Keystone #11	Pinal	1922 856	5S	15E	4	20	1	\$ 155
81	326765	Keystone #12	Pinal	1922 858	5S	15E	4	20	1	\$ 155
82	326772	Range Bull # 1	Maricopa	93 0362063	7N	3W	21	20	1	\$ 155
83	327930	Red Bird # 7	Maricopa	93 0897433	7N	3W	17	20	1	\$ 155
84	327931	Red Bird # 8	Maricopa	93 0897432	7N	3W	20	20	1	\$ 155
85	328302	Red Bird # 9	Maricopa	93 0897431	7N	3W	17	20	1	\$ 155
86	328593	Ceedee #2	Yavapai	2742 961	8N	1W	5	20	1	\$ 155
87	328594	Ceedee #3	Yavapai	2742 963	8N	1W	5	20	1	\$ 155
88	328595	Ceedee #4	Yavapai	2742 965	8N	1W	5	20	1	\$ 155
89	328597	Ceedee #7	Yavapai	2742 969	8N	1W	4	20	1	\$ 155
90	328598	Ceedee #8	Yavapai	2742 971	8N	1W	4	20	1	\$ 155
91	328605	Burro #1	Yavapai	2742 987	12N	1W	33	20	1	\$ 155
92	328606	Burro #2	Yavapai	2742 985	11N	1W	4	20	1	\$ 155
93	328698	Cass No. 4	Maricopa	93 0885578	7N	3W	29	20	1	\$ 155
94	328699	Cass No. 5	Maricopa	93 0885577	7N	3W	29	20	1	\$ 155
95	328700	Cass No. 6	Maricopa	93 0885576	7N	3W	29	20	1	\$ 155
96	328701	Cass No. 7	Maricopa	93 0885575	7N	3W	29	20	1	\$ 155
97	328702	Cass No. 8	Maricopa	93 0885574	7N	3W	29	20	1	\$ 155
98	328703	Ceedee #1	Yavapai	2746 703	8N	1W	5	20	1	\$ 155
99	328704	Ceedee #5	Yavapai	2746 705	8N	1W	5	20	1	\$ 155
100	328705	Genes Dream	Yavapai	2746 707	9.5N	2E	20, 21	20	1	\$ 155
101	328742	Red Bird #11	Yavapai	2754 072	10N	1E	1	40	2	\$ 310
102	329020	RR #1	Maricopa	94 0021782	6N	4W	1	20	1	\$ 155
103	329021	RR #2	Maricopa	94 0021783	6N	4W	1	20	1	\$ 155
104	329022	RR #3	Maricopa	94 0021784	6N	4W	1	20	1	\$ 155
105	329023	RR #4	Maricopa	94 0021785	6N	4W	1	20	1	\$ 155
106	329318	Mercer's Place	Yavapai	2777 216, 3288 700	11N	1W	4	20	1	\$ 155
107	329388	Bad Luck	Yavapai	2780 912	12N	1W	14, 23	20	1	\$ 155
108	329389	No Luck	Yavapai	2780 914	12N	1W	23	20	1	\$ 155
109	329390	Good Luck	Yavapai	2780 916	12N	1W	23, 24	20	1	\$ 155
110	329391	Great Luck	Yavapai	2780 918	12N	1W	24	20	1	\$ 155
111	329392	Clinton	Yavapai	2780 920	12N/12N	1W/2W	30/25	20	1	\$ 155
112	329393	Clyde	Yavapai	2780 922	12N/12N	1W/2W	30/25	20	1	\$ 155
113	329394	Bonny	Yavapai	2780 924	12N	1W	30	20	1	\$ 155
114	329800	Gypsy Moth 1	Maricopa	94 0218517	7N	3W	21	20	1	\$ 155
115	329801	Gypsy Moth 2	Maricopa	94 0218518	7N	3W	21	20	1	\$ 155
116	331233	Red Basin #1	Maricopa	14 0184527	6N	6W	26	145.45	8	\$ 1,240
117	331455	Chris #1	Yavapai	2919 631	12N	2W	36	20.0	1	\$ 155
118	333426	La Siesta #1	Maricopa	95 0185054	7N	3W	30	20	1	\$ 155
119	333427	La Siesta #3	Maricopa	95 0185055	7N	3W	30	20	1	\$ 155
120	338207	Seven Grand	Maricopa	98 0139764	7N	4W	25	20	1	\$ 155
21	339964	RR #5	Maricopa	96 0488373	6N	4W	1	20	1	\$ 155
22	339965	RR #6	Maricopa	96 0488374	6N	4W	1	20	1	\$ 155
23	348628	Vira Anne 1	Yavapai	2015-0008296	12.5N	1W	27	17.3	1	\$ 155
24	350275	Gold Bug	Maricopa	98 0535738	6N	6W	26	20	1	\$ 155
25	350276	Gold Master	Maricopa	98 0535739	6N	6W	26	20	1	\$ 155
26	350277	Lobo	Maricopa	98 0535740	6N	6W	26	20	1	\$ 155
27	350278	Mine Lab	Maricopa	98 0535741	6N	6W	26	20	1	\$ 155
28	350279	Webster Mine	Maricopa	98 0535742	6N	6W	26	20	1	\$ 155
29	350280	Whistler	Maricopa	98 0535743	6N	6W	26	20	1	\$ 155
30	350281	Wickenburg	Maricopa	98 0535744	6N	6W	26	20	1	\$ 155
31	350905	King Duck II	Yavapai	4247 552	10N/9N	4W/4W	31/6	20	1	\$ 155
32	350906	Little Terry	Yavapai	4247 551	9N	4W	6	20	1	\$ 155
33	350907	Devils Nest AU 9	Yavapai	3620 60	9N	4W	6	20	1	\$ 155
34	350910	Devils Nest AU 12	Yavapai	3620 62	9N	4W	6	20	1	\$ 155
35	356382	Ducbill #1	Yavapai	27429 1402 63	12N	1W	17	20	1	\$ 155
36	356383	Ducbill #2	Yavapai	27430 1402 65	12N	1W	17	20	1	\$ 155
37	356553	Au Sum 1	Yavapai	2016-0019091	10N	2E	29,32	20	1	\$ 155
38	358378	Hidden Treasure	Yavapai	3633816 4076 796	12N/12N	1W/2W	30,31/25,80	20	1	\$ 155
39	358379	Aquarius Ext. West #1	Yavapai	3633817 4076 797	10N	2E	18	20	1	\$ 155
40	358380	Aquarius Ext. West #2	Yavapai	3633818 4076 798	10N	2E	18	20	1	\$ 155

RRPC Master Claims List as of August, 2016

278

\$ 43,090

\$ 155.00

Seq. #	AMC #	Claim Name	County	Cnty Recorder Data Record/Book Page	Township	Range	Section	Total Acres	20 Acre Segments	Maint. Fee
141	358381	Aquarius Ext. West #3	Yavapai	3633819 4076 799	10N	2E	18	20	1	\$ 155
142	358382	Aquarius Ext. West #4	Yavapai	3633820 4076 800	10N	2E	18	20	1	\$ 155
143	362558	Holly Marie	Yavapai	3769442 4190 312	9.5N	2E	20, 21	11.45	1	\$ 155
144	364340	Mary Francis	Yavapai	3824744 4236 718	13N	1E	29	16	1	\$ 155
145	364688	RR #7	Maricopa	05 0477984	6N	4W	1	20	1	\$ 155
146	364689	RR #8	Maricopa	05 0477985	6N	4W	1	20	1	\$ 155
147	364821	Ray's Right Place	Yavapai	3837647 4247 553	12N	1W	24	17.0	1	\$ 155
148	365711	Diggens Paradise	Yavapai	3864391 4269 775	12.5N	1W	26	17.1	1	\$ 155
149	366267	Cobi's Gold	Yavapai	4281 505	11.5N	1E	19	20	1	\$ 155
150	366268	Renee's Best Chance	Yavapai	4281 507	13N	3W	32	20	1	\$ 155
151	366269	Rough Road	Yavapai	4281 503	11.5N	1E	30	20	1	\$ 155
152	366270	Stuck Duck	Yavapai	4281 506	13N	3W	32	20	1	\$ 155
153	366271	Tegan's Bank	Yavapai	4281 504	11.5N	1E	30	20	1	\$ 155
154	368415	Jacks Hideaway	Yavapai	4308 863	13N	3W	29	20	1	\$ 155
155	371350	Wilgers Wish	Yavapai	4372 442	13N	3W	32	20	1	\$ 155
156	371802	Happy Times	Yavapai	4390 621	13N	3W	29, 32	20	1	\$ 155
157	371803	Saddle Tramps	Yavapai	4390 622	13N	3W	29	20	1	\$ 155
158	374274	Lori's Place	Maricopa	06 1491113	7N	3W	20	20	1	\$ 155
159	374275	Charles' Dream	Maricopa	06 1491112	7N	3W	20	20	1	\$ 155
160	374511	Carolyn D	Yavapai	4444 69	13N	3W	29	20.0	1	\$ 155
161	374512	Cole Ryan	Yavapai	2014-0056442	12.5N	1W	24	18.5	1	\$ 155
162	374513	Caitlin Lisa	Yavapai	4452 917	12.5, 13N	1W	23,24,35,36	20.0	1	\$ 155
163	374726	Roslyn's Roost	Maricopa	06 1445012	7N	3W	17	20	1	\$ 155
164	406356	Cass No. 9	Maricopa	11 0623988	7N	3W	29	20	1	\$ 155
165	407030	Carols Corner	Maricopa	11 0623989	7N	3W	18	20	1	\$ 155
166	410363	Cass # 10	Maricopa	11 0735632	7N	3W	29	20	1	\$ 155
167	410364	Golden Sands	Maricopa	11 073563	7N	3W	18	20	1	\$ 155
168	411385	Lucky Seven	Maricopa	2015-0047844	7N	5W	3	20	1	\$ 155
169	427326	Rexs' Place	Yavapai	4914 661	11.5N	1E	30	20	1	\$ 155
170	429669	Bumble Bee King 1	Yavapai	2014-0040521	9N	2E	5	20	1	\$ 155
171	429670	Bumble Bee King 2	Yavapai	2014-0040522	9N	2E	5	20	1	\$ 155
172	429671	Bumble Bee King 3	Yavapai	2014-0040523	9N	2E	5	20	1	\$ 155
173	429672	Bumble Bee King 4	Yavapai	2014-0040524	9N	2E	5	20	1	\$ 155
174	429673	Bumble Bee King 5	Yavapai	2014-0040525	9N	2E	5	20	1	\$ 155
175	429674	Bumble Bee King 6	Yavapai	2014-0040526	9N	2E	5	20	1	\$ 155
176	429675	C-6 Placer 1	La Paz	2014-02950	4N	20W	23	20	1	\$ 155
177	429676	C-6 Placer 2	La Paz	2014-02951	4N	20W	23	20	1	\$ 155
178	429677	C-6 Placer 3	La Paz	2014-02952	4N	20W	23	20	1	\$ 155
179	429678	CD7 Placer 1	La Paz	2014-02953	4N	20W	15	20	1	\$ 155
180	429679	CD7 Placer 2	La Paz	2014-02954	4N	20W	15	20	1	\$ 155
181	429680	CD7 Placer 3	La Paz	2014-02955	4N	20W	15	20	1	\$ 155
182	429681	CD7 Placer 4	La Paz	2014-02956	4N	20W	14	20	1	\$ 155
183	429682	CD7 Placer 5	La Paz	2014-02957	4N	20W	23	20	1	\$ 155
184	429683	CD7 Placer 6	La Paz	2014-02958	4N	20W	23	20	1	\$ 155
185	429691	D6 Placer 1	La Paz	2014-02946	4N	20W	26	20	1	\$ 155
186	429692	D6 Placer 2	La Paz	2014-02947	4N	20W	26	20	1	\$ 155
187	429695	Jake 1-1	Maricopa	2014-0584266	7N	3W	29	20	1	\$ 155
188	429696	Jake 1-2	Maricopa	2014-0584267	7N	3W	29	20	1	\$ 155
189	429697	Jake 1-3	Maricopa	2014-0584268	7N	3W	29	20	1	\$ 155
190	429698	Jake 1-4	Maricopa	2014-0584269	7N	3W	29	20	1	\$ 155
191	429699	Jake 2-1	Maricopa	2014-0584270	7N	3W	29	20	1	\$ 155
192	429700	Jake 2-2	Maricopa	2014-0584271	7N	3W	29	20	1	\$ 155
193	429701	Jake 2-3	Maricopa	2014-0584272	7N	3W	29	20	1	\$ 155
194	429702	Jake 2-4	Maricopa	2014-0584273	7N	3W	29	20	1	\$ 155
195	429703	Janet Lynn 2-1	Yavapai	2014-0040485	10N	1E	12	20	1	\$ 155
196	429708	Leave No Holes 1	Yavapai	2014-0040513	9N	5W	12	20	1	\$ 155
197	429709	Leave No Holes 2	Yavapai	2014-0040514	9N	5W	12	20	1	\$ 155
198	429710	Leave No Holes 3	Yavapai	2014-0040515	9N	5W	12	20	1	\$ 155
199	429711	Leave No Holes 4	Yavapai	2014-0040516	9N	5W	12	20	1	\$ 155
200	429712	Leave No Holes 5	Yavapai	2014-0040517	9N	5W	12	20	1	\$ 155
01	429713	Leave No Holes 6	Yavapai	2014-0040518	9N	5W	12	20	1	\$ 155
02	429714	Leave No Holes 7	Yavapai	2014-0040519	9N	5W	12	20	1	\$ 155
03	429715	Leave No Holes 8	Yavapai	2014-0040520	9N	5W	12	20	1	\$ 155
04	429716	Ocotillo 1-1	Maricopa	2014-0584274	7N	3W	17, 20	20	1	\$ 155
05	429717	Ocotillo 1-2	Maricopa	2014-0584275	7N	3W	17, 20	20	1	\$ 155
06	429718	Ocotillo 1-3	Maricopa	2014-0584276	7N	3W	17, 20	20	1	\$ 155
07	429719	Ocotillo 1-4	Maricopa	2014-0584277	7N	3W	17, 20	20	1	\$ 155
08	429720	Ocotillo 2-1	Maricopa	2014-0584278	7N	3W	17, 18	20	1	\$ 155
09	429721	Ocotillo 2-2	Maricopa	2014-0584279	7N	3W	17, 18	20	1	\$ 155
10	429722	Ocotillo 2-3	Maricopa	2014-0584280	7N	3W	17, 18	20	1	\$ 155

RRPC Master Claims List as of August, 2016

\$ 43,090

278 \$ 155.00

Seq. #	AMC #	Claim Name	County	Cnty Recorder Data Record/Book Page	Township	Range	Section	Total Acres	20 Acre Segments	Maint. Fee
211	429723	Ocotillo 2-4	Maricopa	2014-0584281	7N	3W	17, 18	20	1	\$ 155
212	429724	Randy B 1	Maricopa	2014-0584262	7N	3W	30	20	1	\$ 155
213	429725	Randy B 2	Maricopa	2014-0584263	7N	3W	30	20	1	\$ 155
214	429726	Randy B 3	Maricopa	2014-0584264	7N	3W	30	20	1	\$ 155
215	429727	Randy B 4	Maricopa	2014-0584265	7N	3W	30	20	1	\$ 155
216	429728	RR-Humbug 1-1	Yavapai	2014-0040505	8N	1E	31	20	1	\$ 155
217	429729	RR-Humbug 1-2	Yavapai	2014-0040506	8N	1E	31	20	1	\$ 155
218	429730	RR-Humbug 1-3	Yavapai	2014-0040507	8N	1E	31	20	1	\$ 155
219	429731	RR-Humbug 1-4	Yavapai	2014-0040508	8N	1E	31	20	1	\$ 155
220	429732	RR-Humbug 1-5	Yavapai	2014-0040509	8N	1E	31	20	1	\$ 155
221	429733	RR-Humbug 1-6	Yavapai	2014-0040510	8N	1E	31	20	1	\$ 155
222	429734	RR-Humbug 2-1	Yavapai	2014-0040511	8N	1E	31	20	1	\$ 155
223	429735	RR-Humbug 2-2	Yavapai	2014-0040512	8N	1E	31	20	1	\$ 155
224	429736	Sharon Lee 1-1	Yavapai	2014-0040492	11N	1E	35, 36	20	1	\$ 155
225	429737	Sharon Lee 1-2	Yavapai	2014-0040493	11N	1E	35, 36	20	1	\$ 155
226	429738	Sharon Lee 1-3	Yavapai	2014-0040494	11N	1E	35, 36	20	1	\$ 155
227	429739	Sharon Lee 1-4	Yavapai	2014-0040495	11N	1E	35, 36	20	1	\$ 155
228	429740	Sharon Lee 2-1	Yavapai	2014-0040496	11N	1E	35	20	1	\$ 155
229	429741	Sharon Lee 2-2	Yavapai	2014-0040497	11N	1E	35	20	1	\$ 155
230	429742	Sharon Lee 2-3	Yavapai	2014-0040498	11N	1E	35	20	1	\$ 155
231	429743	Sharon Lee 4-1	Yavapai	2014-0040499	10N	1E	1, 2	20	1	\$ 155
232	429744	Sharon Lee 4-2	Yavapai	2014-0040500	10N	1E	1, 2	20	1	\$ 155
233	429745	Sharon Lee 4-3	Yavapai	2014-0040501	10N	1E	1, 2	20	1	\$ 155
234	429746	Sharon Lee 4-4	Yavapai	2014-0040502	10N	1E	1, 2	20	1	\$ 155
235	429747	Sharon Lee 4-5	Yavapai	2014-0040503	10N	1E	1, 2	20	1	\$ 155
236	429748	Sharon Lee 4-6	Yavapai	2014-0040504	10N	1E	1, 2	20	1	\$ 155
237	430534	Lucky Eight	Maricopa	2015-0077601	7N	5W	3	20	1	\$ 155
238	430535	Lucky Nine	Maricopa	2015-0077602	7N	5W	3	20	1	\$ 155
239	430611	Vira Anne 2	Yavapai	2014-0008298	12.5N	1W	27	16.50	1	\$ 155
240	433937	Diablo Placer 1	La Paz	2015-03207	4N	20W	24	20	1	\$ 155
241	433938	Diablo Placer 2	La Paz	2015-03208	4N	20W	24	20	1	\$ 155
242	433939	Diablo Placer 3	La Paz	2015-03209	4N	20W	23	20	1	\$ 155
243	433940	Diablo Placer 4	La Paz	2015-03210	4N	20W	23	20	1	\$ 155
244	435083	Aquarius Extension 1	Yavapai	2015-0052260	10N	2E	18	20	1	\$ 155
245	435084	Aquarius Extension 2	Yavapai	2015-0052261	10N	2E	18	20	1	\$ 155
246	435085	Aquarius Extension 3	Yavapai	2015-0052262	10N	2E	18	20	1	\$ 155
247	435086	Aquarius Extension 4	Yavapai	2015-0052263	10N	2E	18	20	1	\$ 155
248	435087	Janet Lynn 2-2	Yavapai	2015-0052258	10N	1E	12, 13	15	1	\$ 155
249	435088	Janet Lynn 2-3	Yavapai	2015-0052259	10N	1E	12, 13	15	1	\$ 155
250	435561	Bean Bag 2-1	Yavapai	2015-0055543	10N	2E	30	20	1	\$ 155
251	435562	Bean Bag 2-2	Yavapai	2015-0055544	10N	2E	30	20	1	\$ 155
252	435563	Diablo Placer 7	La Paz	2015-04237	4N	20W	23	20	1	\$ 155
253	435564	Diablo Placer 6	La Paz	2015-04238	4N	20W	23	20	1	\$ 155
254	435565	Diablo Placer 5	La Paz	2015-04239	4N	20W	23	20	1	\$ 155
255	435566	Eastside Placer 1	La Paz	2015-04234	4N	20W	23	20	1	\$ 155
256	435567	Eastside Placer 2	La Paz	2015-04236	4N	20W	23	20	1	\$ 155
257	435568	Eastside Placer 3	La Paz	2015-04235	4N	20W	23	10	1	\$ 155
258	435569	Laura Kay 1-1	Yavapai	2015-0055540	10N	1E	12	20	1	\$ 155
259	435570	Laura Kay 1-2	Yavapai	2015-0055541	10N	1E	12	20	1	\$ 155
260	435571	Laura Kay 1-3	Yavapai	2015-0055542	10N	1E	12	20	1	\$ 155
261	437448	Au Sum 2	Yavapai	2016-0019092	10N	2E	28,33	20	1	\$ 155
262	437449	Carrie 1-2	Maricopa	2016-0222160	7N	3W	31	20	1	\$ 155
263	437450	Carrie 2-2	Maricopa	2016-0222162	7N	3W	31	20	1	\$ 155
264	437451	Goodwin 1-1	Yavapai	2016-0019094	12N	1W	28, 33	20	1	\$ 155
265	437452	Goodwin 1-2	Yavapai	2016-0019093	12N	1W	33	20	1	\$ 155
266	437453	Pennyweight 1-2	Maricopa	2016-0222164	7N	3W	29	20	1	\$ 155
267	437934	Carrie 1-1	Maricopa	2016-0242927	7N	3W	31	20	1	\$ 155

5,458.9 278 \$ 43,090

278 segments x \$155 = \$ 43,090

PHOENIX, ARIZONA

2016 AUG 10 P 1:18

RECEIVED
BLM AZ STATE OFFICE

United States Department of the Interior
Bureau of Land Management
 DIV OF LANDS, MINRLS & ENERGY
 ONE N CENTRAL AVE
 PHOENIX, AZ 85004 -4427
 Phone: 602-417-9200

Receipt

No: 3625476

Transaction #: 3729230	
Date of Transaction: 08/10/2016	
CUSTOMER:	
ROADRUNNER PROSPECTORS CLUB INC PO BOX 56804 PHOENIX, AZ 85079-6804 US	

LINE #	QTY	DESCRIPTION	REMARKS	UNIT PRICE	TOTAL
1	1.00	LOCATABLE MINERALS / MINING CLAIMS- NOT NEW-UNADJUD, ONE AUTH NO. ONLY / MINING CLAIM MONEY RECEIVED CASES: AMC11413/\$43090.00	2017 MAINT (267)	- n/a -	43090.00
TOTAL:					\$43,090.00

PAYMENT INFORMATION			
1	AMOUNT:	43090.00	POSTMARKED: N/A
	TYPE:	CHECK	RECEIVED: 08/10/2016
	CHECK NO:	9073	
	NAME:	ROADRUNNER PROSPECTORS CLUB INC PO BOX 56804 PHOENIX AZ 85079-6804 US	

REMARKS

This receipt was generated by the automated BLM Collections and Billing System and is a paper representation of a portion of the official electronic record contained therein.

NOTICE!!

These documents have been scanned!

Do not place un-scanned documents beneath this notice!

Do not remove this notice from this file!

GPO Jacket No. 560-102
Print Order 61540
Rise Business Services, LLC
Job=AZ15 5/6/2019



Box Number= AZ15022



Claim Begin-End: AMC435083-AMC435088

5 Miscellaneous



AZ15022-19

AMC434518-AMC435476

**NO
DOCUMENTS
FOUND**

NO DOCUMENTS FOUND
NO DOCUMENTS FOUND

NOTICE!!

These documents have been scanned!

Do not place un-scanned documents beneath this notice!

Do not remove this notice from this file!

GPO Jacket No. 560-102
Print Order 61540
Rise Business Services, LLC
Job=AZ15 5/6/2019



Box Number= AZ15022



Claim Begin-End: AMC435083-AMC435088

6 Location Notices-Amendments and Supporting Documents



AZ15022-19

AMC434518-AMC435476

MINING CLAIM STATUS REPORT

Data Entered: 11/23/15 PM

MTP Checked By: JMU
GEO Checked By: JMU

LEAD SERIAL NUMBER: AMC 435083 thru AMC 435088

NUMBER OF CLAIMS & TYPE:

- 6 LODE
- PLACER
- ASSOCIATION PLACER
- MILL SITE
- TUNNEL SITE

CHARGES:

Location Fee @ \$37 = \$ 222

Processing Fee @ \$20 = \$ 120

Maintenance Fee @ \$155 = \$ 930

Add'l Maint Fee for Assoc Placer = \$

SUBTOTAL \$

Other Fees \$

Other Fees \$

TOTAL \$ 1,272

TOTAL ACREAGE: 20 Per Claim
(Placer Only)

NUMBER OF LOCATORS: 1

DOCUMENTS RECEIVED VIA: Over-the-Counter Mail TIMELY FILED: Yes No

LEGAL DESCRIPTION: T 10N R 2E SEC 18

T 10N R 1E SEC 12, 13

T _____ R _____ SEC _____

T _____ R _____ SEC _____

T _____ R _____ SEC _____

BLM FOREST SERVICE SUBJ TO PL 359: Yes No
WILDERNESS AREA

SPLIT ESTATE: N/A SX PX OTHER
SRHA Was proper Notice filed if located on SHRA Land? Yes No

RECONVEYED MINERALS ON BLM LAND REQUIRE OPENING ORDER FROM 1944 TO 1993:
Open to Entry On _____ N/A

COMMENTS/STATUS: VOID PARTIALLY VOID PVT MINERALS WITHDRAWN LANDS
OTHER

AMC 435083

Claimant acknowledges that portions of the following claim(s) site(s) may be void or voidable.

Printed Name of Claimant _____ Signature of Claimant _____

*****FINAL ADJUDICATION*****

DATE 3/10/2016 INITIALS PM

When recorded mail to:



Roadrunner Prospectors' Club, Inc.
PO Box 56804
Phoenix, AZ 85079

[] Check here if this is a change of address

Telephone: (602) 274-2521
Email: rrpc-office@roadrunnergold.com

LOCATION NOTICE FOR PLACER MINING CLAIM

[] Amendment BLM Serial # _____

NOTICE IS HEREBY GIVEN that the Aquarius

Extension 1 placer mining claim has been located by

Roadrunner Prospectors' Club, Inc. whose current mailing

address is: PO Box 56804

Phoenix, AZ 85079

RECEIVED BLM AZ STATE OFFICE 2015 NOV 18 P 2:23 PHOENIX, AZ	BLM Date Stamp
--	----------------------

The general course of this claim is north to south and it is situated in Yavapai County, Arizona. This claim is 1320 feet in length and 660 feet in width.

20 Total Claim Acreage. This claim runs from the location monument on which this location notice is posted at the SE corner of the claim approximately 0 feet in a south direction to the south end line and 1320 feet in a north direction to the north end line. This claim is marked by four monuments, one at each corner of the claim.

The location monument on which this notice is posted is situated within Section 18, Township 10 N, Range 2 E, Gila Salt River Base and Meridian, Arizona. This claim encompasses

portions of the following legal subdivision(s) if located by legal subdivision or the following quarter section (s), section (s), Township (s) and Range(s) NW 1/4, section 18, Township 10N, Range 2E, Gila Salt River Base and Meridian, Arizona.

The locality of this claim with reference to some natural object or permanent monument and additional information (if any) concerning its locality are as follows: the NE corner of the claim is 3300 feet west of the NE corner of section 18, township 10N, Range 2E, G+S R B+M. The above information is shown on the attached map.

DATED AND POSTED on the ground this 8th day of September, 2015.

[] LOCATOR (s) AGENT

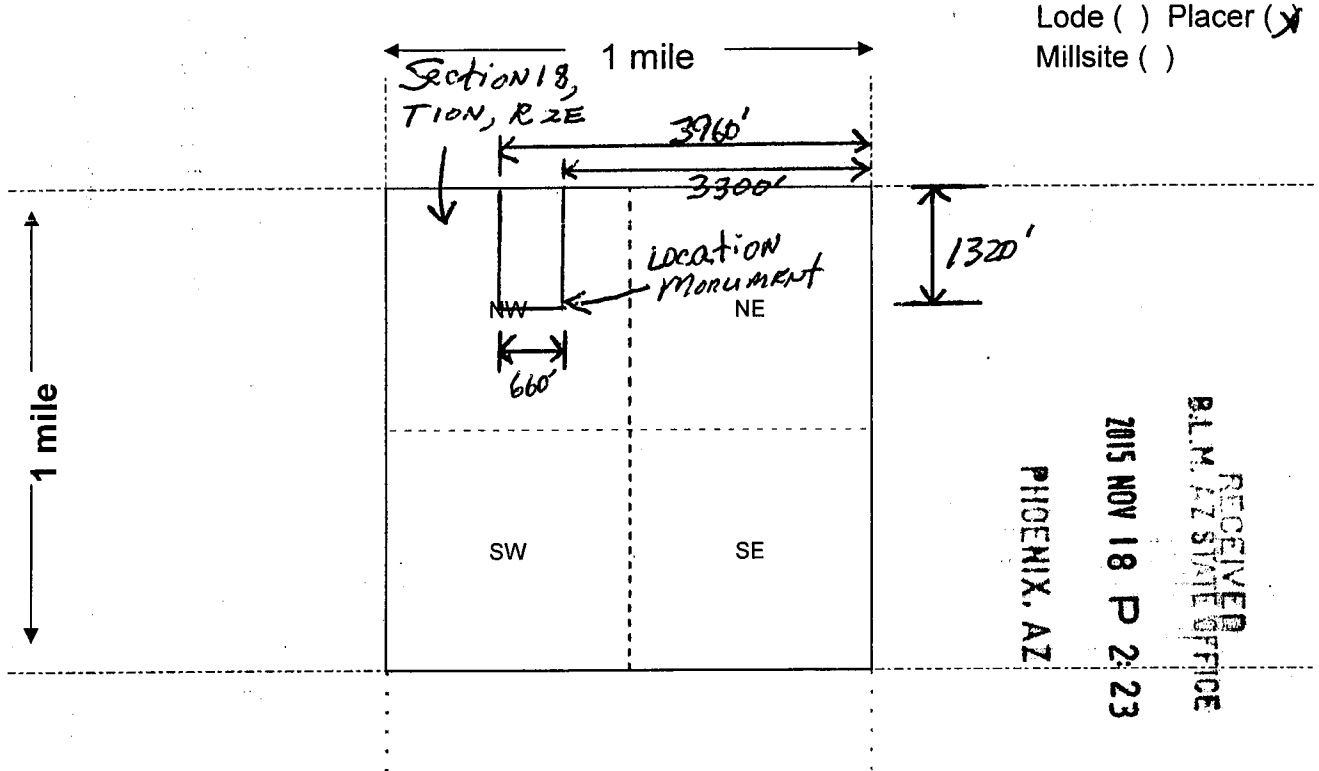
Print Name(s) Robert Hood

Signature(s) [Signature]

Form MCF102
Revised July 2014

AMC 435083

MINING CLAIM MAP



Scale: 1" = 2000 feet



1. The above map depicts the Aquarius Extension 1 mining claim, which is located in Section (s) 18, Township 12 N, Range 2 E, Gila and Salt River Base and Meridian, Pavapai County, Arizona. Total claim acreage is 20 acres
2. The type of corner and location monuments used are as follows: capped PVC pipes over steel posts
3. The bearings and distances in degrees and feet between claim corners and to a public land survey monument are as depicted on the map.
4. If the claim is a placer or millsite claim with exterior limits conforming to legal subdivisions of the public survey, provide a legal description of the claim W 1/2, NE 1/4, NW 1/4, Section 18, T10N, R2E, G+S R B+M

Form MCF100a
Revised July 2014

This form is available from the Arizona Geology Survey and may be reproduced.

AMC435083

When recorded mail to:

Roadrunner Prospectors' Club, Inc.
PO Box 56804
Phoenix, AZ 85079

2015-0052261 NML
10/30/2015 4:41 PM Page: 1 of 2
Leslie M. Hood
OFFICIAL RECORDS OF YAVAPAI COUNTY \$10.00
ROADRUNNER PROSPECTORS CLUB INC



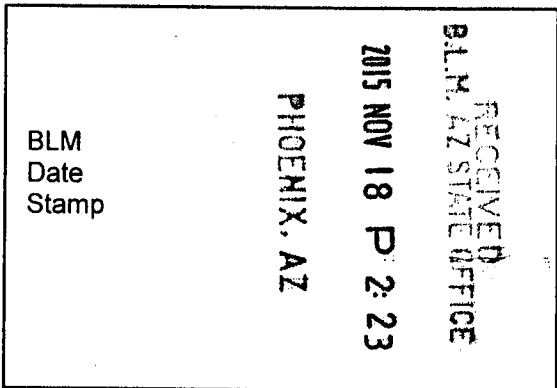
[] Check here if this is a change of address

Telephone: (602) 274-2521
Email: rrpc-office@roadrunnergold.com

LOCATION NOTICE FOR PLACER MINING CLAIM

[] Amendment BLM Serial # _____

NOTICE IS HEREBY GIVEN that the Aquarius
Extension 2 placer mining claim has been located by
Roadrunner Prospectors' Club, Inc. whose current mailing
address is: PO Box 56804
Phoenix, AZ 85079



The general course of this claim is north to south and it is situated in Yavapai
County, Arizona. This claim is 1320 feet in length and 660 feet in width.
20 Total Claim Acreage. This claim runs from the location monument on which this location notice is
posted at the SW corner of the claim approximately 0 feet in a south direction to the
south end line and 1320 feet in a north direction to the north end line. This claim is
marked by four monuments, one at each corner of the claim.

The location monument on which this notice is posted is situated within Section 18, Township
10 N, Range 2 E, Gila Salt River Base and Meridian, Arizona. This claim encompasses
portions of the following legal subdivision(s) if located by legal subdivision or the following quarter section (s),
section (s), Township (s) and Range(s) NW 1/4, section 18, township 10N,
range 2E, Gila Salt River Base and Meridian, Arizona.

The locality of this claim with reference to some natural object or permanent monument and additional information
(if any) concerning its locality are as follows: the NE corner of the claim is 2040
feet west of the NE corner of section 18, township 10N,
range 2E, G+SRB+M The above information is shown on the attached map.

DATED AND POSTED on the ground this 8th day of September, 2015.

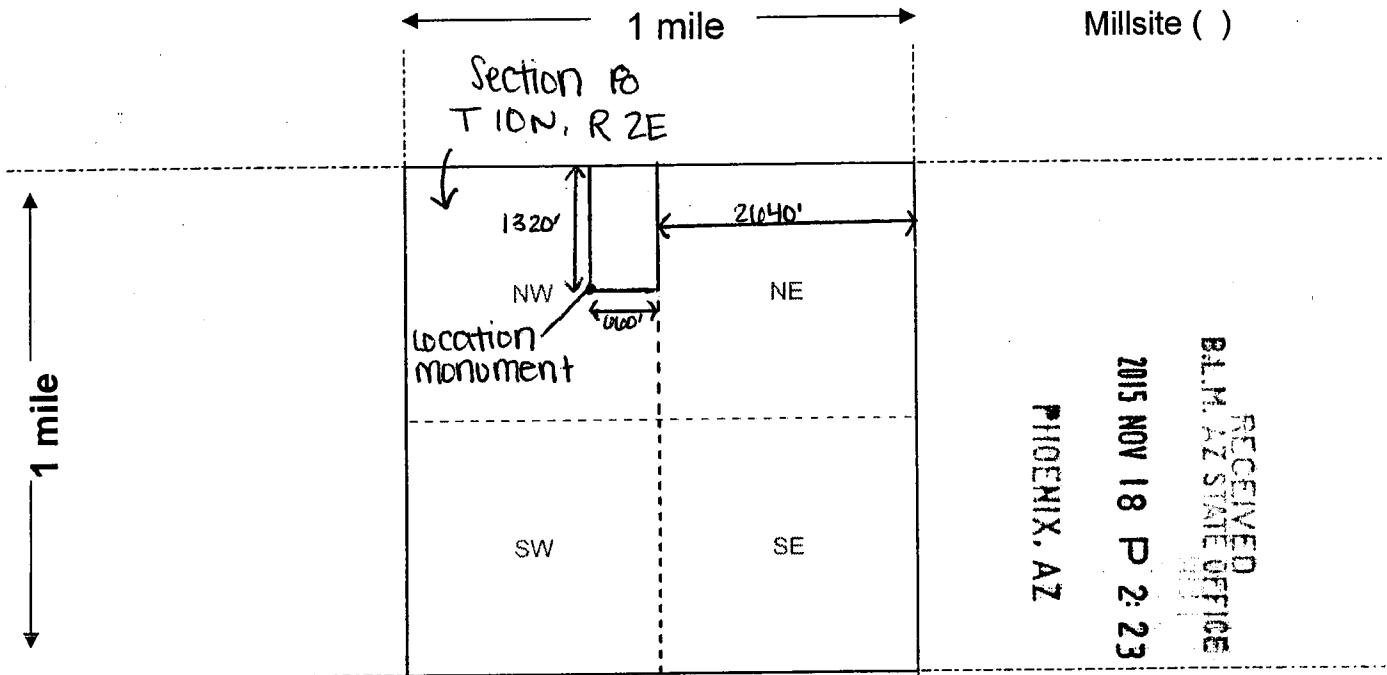
[] LOCATOR (s) [X] AGENT

Print Name(s) Robert Hood
Signature(s) [Signature]

AMC 435084

MINING CLAIM MAP

Lode () Placer (X)
Millsite ()



Scale: 1" = 2000 feet



AMC 435084

- The above map depicts the Aquarius Extension 2 mining claim, which is located in Section (s) 18, Township 10 N, Range R E, Gila and Salt River Base and Meridian, Yavapai County, Arizona. Total claim acreage is 20 acres
- The type of corner and location monuments used are as follows: capped PVC pipes over steel posts
- The bearings and distances in degrees and feet between claim corners and to a public land survey monument are as depicted on the map.
- If the claim is a placer or millsite claim with exterior limits conforming to legal subdivisions of the public survey, provide a legal description of the claim E 1/2, NE 1/4, NW 1/4, Section 18, T10N, R2E, G+S R B+M

Form MCF100a
Revised July 2014

When recorded mail to:

Roadrunner Prospectors' Club, Inc.
PO Box 56804
Phoenix, AZ 85079



[] Check here if this is a change of address

Telephone: (602) 274-2521
Email: rrpc-office@roadrunnergold.com

LOCATION NOTICE FOR PLACER MINING CLAIM

[] Amendment BLM Serial # _____

NOTICE IS HEREBY GIVEN that the Aquarius
Extension 3 placer mining claim has been located by
Roadrunner Prospectors' Club, Inc. whose current mailing
address is: PO Box 56804
Phoenix, AZ 85079

RECEIVED
BLM AZ STATE OFFICE
2015 NOV 18 P 2:23
PHOENIX, AZ
BLM
Date
Stamp

The general course of this claim is north to south and it is situated in Yavapai
County, Arizona. This claim is 1320 feet in length and 660 feet in width.

20 Total Claim Acreage. This claim runs from the location monument on which this location notice is
posted at the NE corner of the claim approximately 0 feet in a north direction to the

north end line and 1320 feet in a south direction to the south end line. This claim is
marked by four monuments, one at each corner of the claim.

The location monument on which this notice is posted is situated within Section 10, Township
10 N, Range 2 E, Gila Salt River Base and Meridian, Arizona. This claim encompasses
portions of the following legal subdivision(s) if located by legal subdivision or the following quarter section (s),
section (s), Township (s) and Range(s) NW 1/4, section 10, township 10N,
Range 2E, Gila Salt River Base and Meridian, Arizona.

The locality of this claim with reference to some natural object or permanent monument and additional information
(if any) concerning its locality are as follows: the NE corner of the claim is 3300
feet west and 1320 feet south of the NE corner of
Section 10, T 10N, R 2E, G+SRB+M The above information is shown on the attached map.

DATED AND POSTED on the ground this 8th day of September, 2015.

[] LOCATOR (s) [X] AGENT

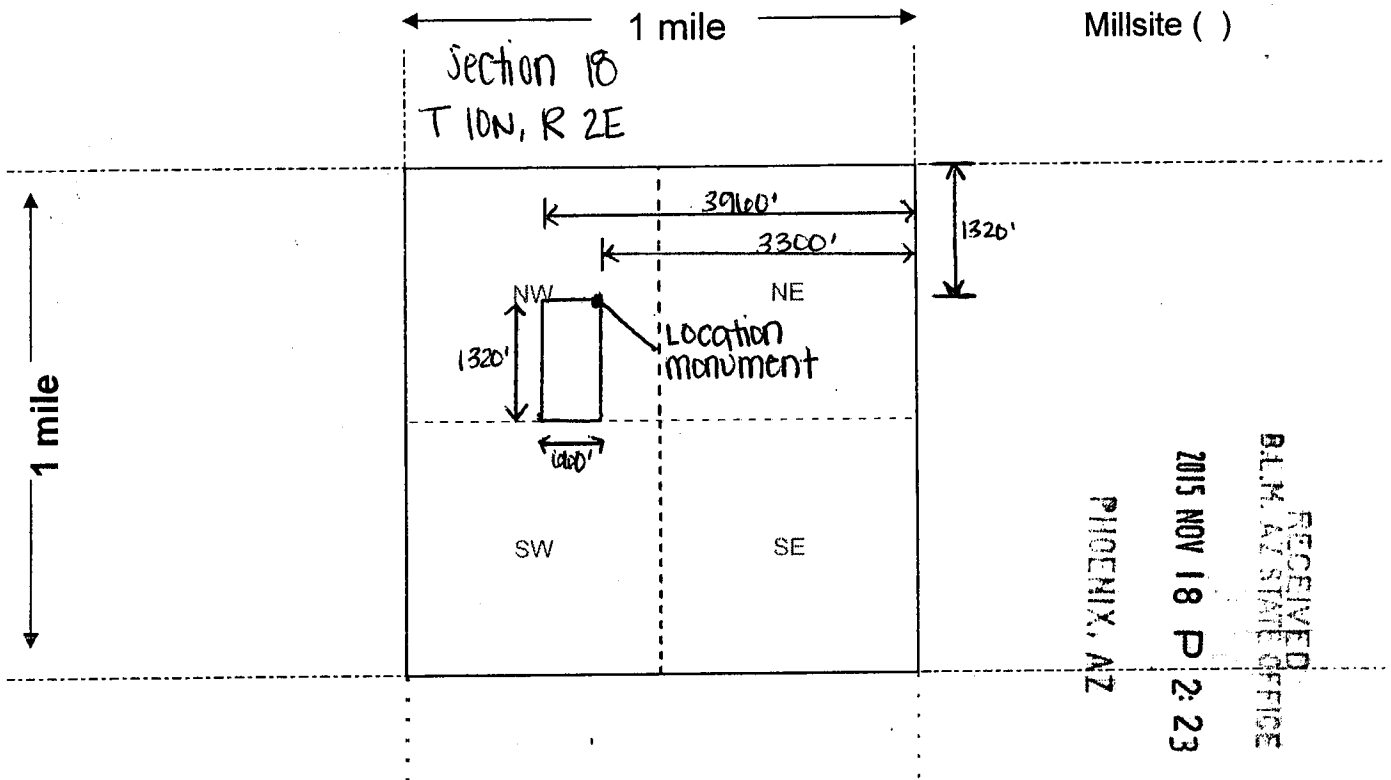
Print Name(s) Robert Hood

Signature(s) Robert Hood

AMC435085

MINING CLAIM MAP

Lode () Placer ()
Millsite ()



RECEIVED
 BLM, AZ STATE OFFICE
 2015 NOV 18 P 2:23
 PHOENIX, AZ

Scale: 1" = 2000 feet



- The above map depicts the Aquarius Extension 3 mining claim, which is located in Section (s) 18, Township 10 N, Range 2 E, Gila and Salt River Base and Meridian, Kavapai County, Arizona. Total claim acreage is 20
- The type of corner and location monuments used are as follows: capped pvc pipes over steel posts
- The bearings and distances in degrees and feet between claim corners and to a public land survey monument are as depicted on the map.
- If the claim is a placer or millsite claim with exterior limits conforming to legal subdivisions of the public survey, provide a legal description of the claim W 1/2, SE 1/4, NW 1/4, Section 18, T 10N, R 2E, G+S R B+M

AMC 435085

Form MCF100a
Revised July 2014

When recorded mail to:

Roadrunner Prospectors' Club, Inc.
PO Box 56804
Phoenix, AZ 85079



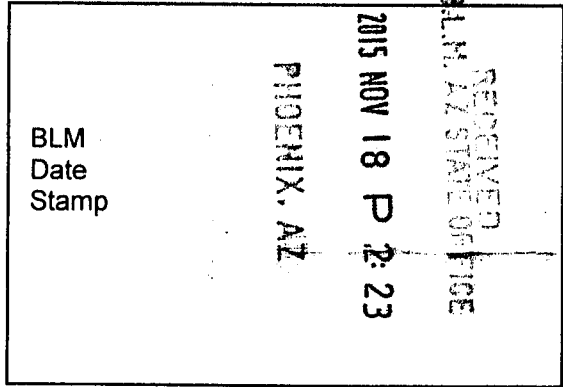
[] Check here if this is a change of address

Telephone: (602) 274-2521
Email: rrpc-office@roadrunnergold.com

LOCATION NOTICE FOR PLACER MINING CLAIM

[] Amendment BLM Serial # _____

NOTICE IS HEREBY GIVEN that the Aquarius
Extension 4 placer mining claim has been located by
Roadrunner Prospectors' Club, Inc. whose current mailing
address is: PO Box 56804
Phoenix, AZ 85079



The general course of this claim is north to south and it is situated in Yavapai
County, Arizona. This claim is 1320 feet in length and 660 feet in width.

20 Total Claim Acreage. This claim runs from the location monument on which this location notice is
posted at the NW corner of the claim approximately 0 feet in a north direction to the
north end line and 1320 feet in a south direction to the south end line. This claim is
marked by four monuments, one at each corner of the claim.

The location monument on which this notice is posted is situated within Section 18, Township
10 N, Range 2 E, Gila Salt River Base and Meridian, Arizona. This claim encompasses
portions of the following legal subdivision(s) if located by legal subdivision or the following quarter section (s),
section (s), Township (s) and Range(s) NW 1/4, section 18, township 10 N,
range 2E, Gila Salt River Base and Meridian, Arizona.

The locality of this claim with reference to some natural object or permanent monument and additional information
(if any) concerning its locality are as follows: the NE corner of the claim is 2640 feet
west and 1320 feet south of the NE corner of section 18,
T 10N, R 2E, G+SR B+M The above information is shown on the attached map.

DATED AND POSTED on the ground this 8th day of September, 2015.

[] LOCATOR (s) [X] AGENT

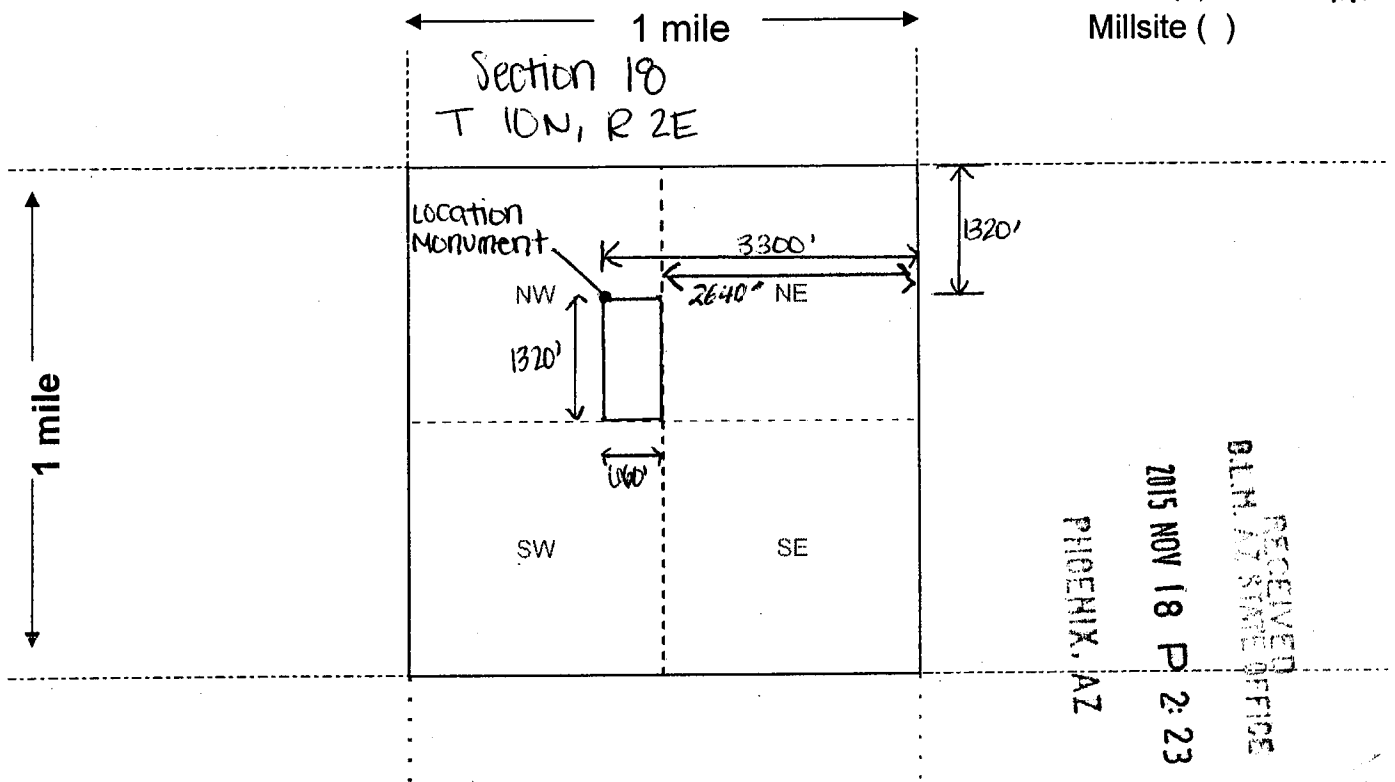
Print Name(s) ROBERT HOOD

Signature(s) [Signature]

AMC435086

MINING CLAIM MAP

Lode () Placer (X)
 Millsite ()



RECEIVED
 G.L.H. STATE OFFICE
 2015 NOV 18 P 2:23
 PHOENIX, AZ

AMC 435086

Scale: 1" = 2000 feet

1. The above map depicts the Aquarius Extension 4 mining claim, which is located in Section (s) 19, Township 10 N, Range 2 E, Gila and Salt River Base and Meridian, Yavapai County, Arizona. Total claim acreage is 20
2. The type of corner and location monuments used are as follows: capped pvc pipes over steel posts
3. The bearings and distances in degrees and feet between claim corners and to a public land survey monument are as depicted on the map.
4. If the claim is a placer or millsite claim with exterior limits conforming to legal subdivisions of the public survey, provide a legal description of the claim E 1/2, SE 1/4, NW 1/4, Section 19, T 10N, R 2E, G+S R B+M

Form MCF100a
 Revised July 2014

When recorded mail to:

Roadrunner Prospectors' Club, Inc.
PO Box 56804
Phoenix, AZ 85079



Check here if this is a change of address

Telephone: (602) 274-2521
Email: rrpc-office@roadrunnergold.com

LOCATION NOTICE FOR PLACER MINING CLAIM

Amendment BLM Serial # _____

NOTICE IS HEREBY GIVEN that the _____

Janet Lynn 2-2 placer mining claim has been located by

Roadrunner Prospectors' Club, Inc. whose current mailing

address is: PO Box 56804

Phoenix, AZ 85079

RECEIVED BLM AZ STATE OFFICE	2015 NOV 18 P 2:23	PHOENIX, AZ	BLM Date Stamp
---------------------------------	--------------------	-------------	----------------------

The general course of this claim is north to south and it is situated in Yavapai County, Arizona. This claim is 990 feet in length and 660 feet in width.

15 Total Claim Acreage. This claim runs from the location monument on which this location notice is posted at the NW corner of the claim approximately 990 feet in a SOUTH direction to the

South end line and 0 feet in a north direction to the north end line. This claim is marked by four monuments, one at each corner of the claim.

The location monument on which this notice is posted is situated within Section 12 ^{unsurveyed}, Township 10 N, Range 1 E, Gila Salt River Base and Meridian, Arizona. This claim encompasses

portions of the following legal subdivision(s) if located by legal subdivision or the following quarter section (s), section (s), Township (s) and Range(s) SE 1/4, section 12, T10N, R1E, unsurveyed and NE 1/4, section 13, T10N, R1E, unsurveyed, Gila Salt River Base and Meridian, Arizona.

The locality of this claim with reference to some natural object or permanent monument and additional information (if any) concerning its locality are as follows: the NE corner of the claim is 330 north of the SE corner of the unsurveyed section 12, T10N, R1E, G+SRB+M. The above information is shown on the attached map.

DATED AND POSTED on the ground this 8th day of September, 2015.

LOCATOR (s) AGENT

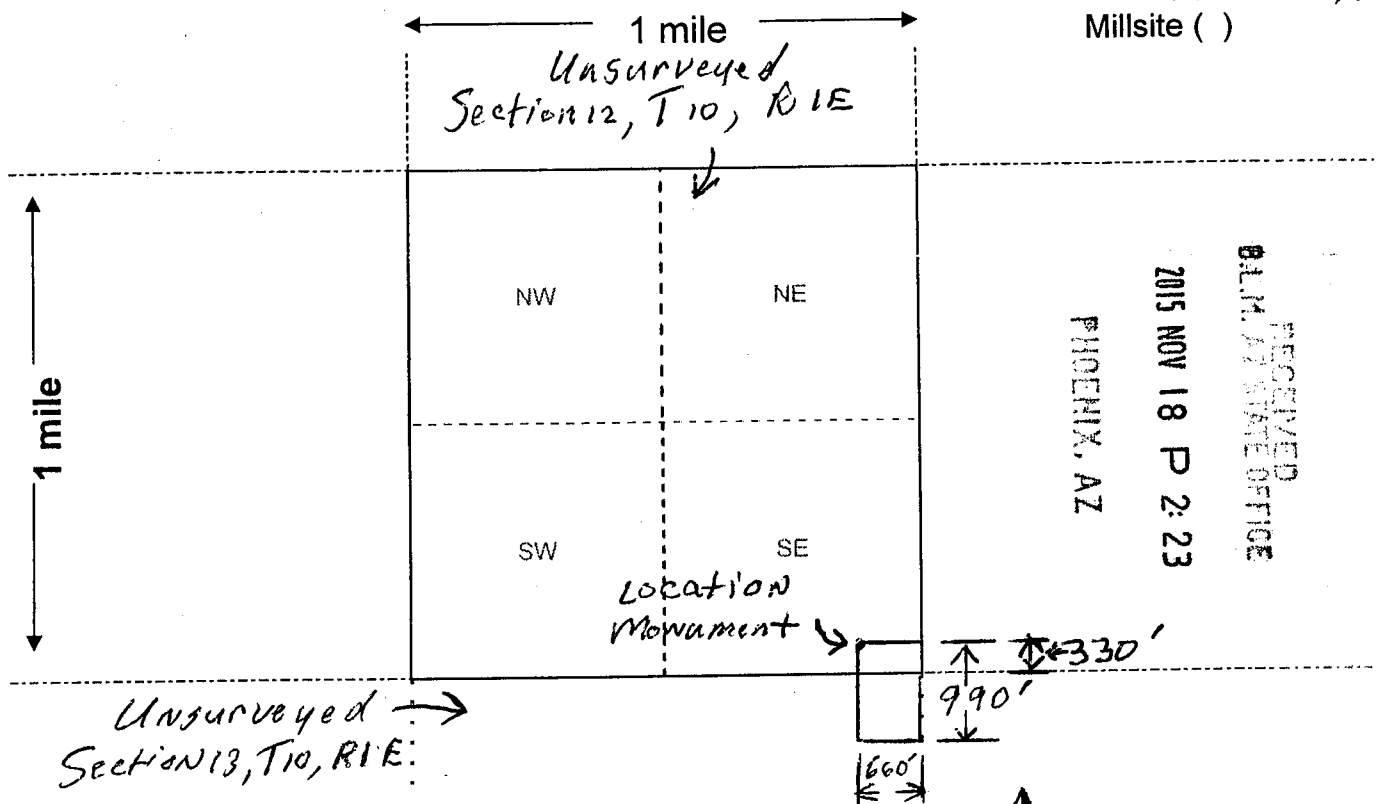
Print Name(s) ROBERT HOOD

Signature(s) Robert Hood

AMC435081

MINING CLAIM MAP

Lode () Placer (X)
Millsite ()



Scale: 1" = 2000 feet

- The above map depicts the Janet Lynn 2-2 mining claim, which is located in Section (s) 12+13, Township 10 N, Range 1 E, Gila and Salt River Base and Meridian, Yavapai County, Arizona. Total claim acreage is 15 acres.
- The type of corner and location monuments used are as follows: capped PVC pipe over steel posts
- The bearings and distances in degrees and feet between claim corners and to a public land survey monument are as depicted on the map.
- If the claim is a placer or millsite claim with exterior limits conforming to legal subdivisions of the public survey, provide a legal description of the claim S 1/2, SE 1/4, SE 1/4, SE 1/4 of unsurveyed Section 12, and NE 1/4, NE 1/4, NE 1/4 of unsurveyed Section 13; of T10N, R1E, G+SR B+M

Form MCF100a
Revised July 2014

When recorded mail to:

Roadrunner Prospectors' Club, Inc.
PO Box 56804
Phoenix, AZ 85079



Check here if this is a change of address

Telephone: (602) 274-2521
Email: rrpc-office@roadrunnergold.com

LOCATION NOTICE FOR PLACER MINING CLAIM

Amendment BLM Serial # _____

NOTICE IS HEREBY GIVEN that the Janet Lynn 2-3
_____ placer mining claim has been located by
Roadrunner Prospectors' Club, Inc. whose current mailing
address is: PO Box 56804
Phoenix, AZ 85079

RECEIVED BLM AZ STATE OFFICE 2015 NOV 18 P 2:23 PHOENIX, AZ	BLM Date Stamp
--	----------------------

The general course of this claim is north to south and it is situated in Yavapai
County, Arizona. This claim is 290 feet in length and 660 feet in width.

15 Total Claim Acreage. This claim runs from the location monument on which this location notice is
posted at the NE corner of the claim approximately 990 feet in a south direction to the
_____ south end line and 0 feet in a north direction to the north end line. This claim is
marked by four monuments, one at each corner of the claim.

The location monument on which this notice is posted is situated within Section 12, Township
10 N, Range 1 E, Gila Salt River Base and Meridian, Arizona. This claim encompasses
portions of the following legal subdivision(s) if located by legal subdivision or the following quarter section (s),
section (s), Township (s) and Range(s) SE 1/4, section 12, T10N, R1E, unsurveyed and
NE 1/4, section 13, T10N, R1E, unsurveyed, Gila Salt River Base and Meridian, Arizona.

The locality of this claim with reference to some natural object or permanent monument and additional information
(if any) concerning its locality are as follows: The NE corner of the claim is 330' north and 660'
west of the SE corner of unsurveyed section 12, T10N, R1E,
G+SR B+M. The above information is shown on the attached map.

DATED AND POSTED on the ground this 8th day of September, 2015.

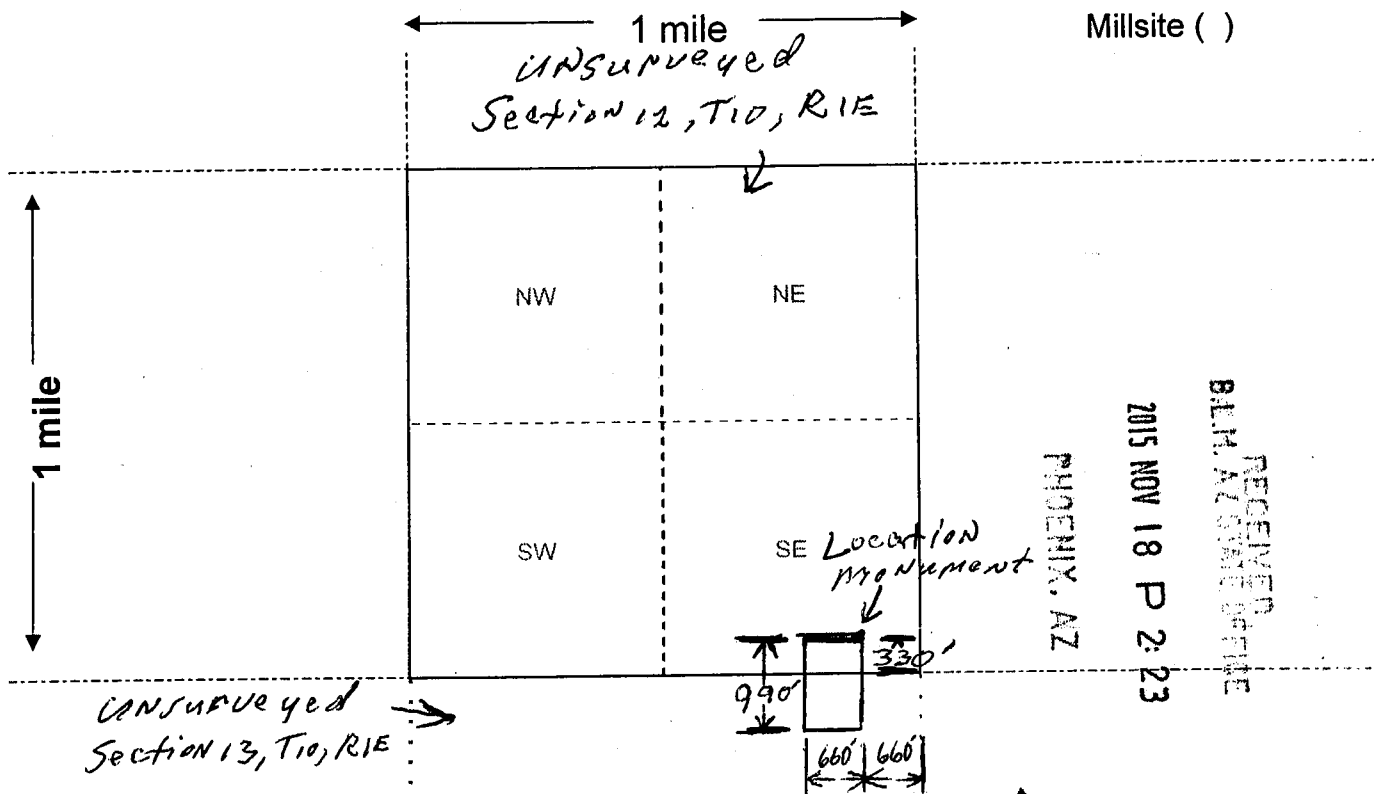
LOCATOR (s) AGENT

Print Name(s) _____
Signature(s) Robert Hood
Robert Hood

AMC 435088

MINING CLAIM MAP

Lode () Placer (X)
Millsite ()



Scale: 1" = 2000 feet

- The above map depicts the Janet Lyon 2-3 mining claim, which is located in Section (s) 12 + 13, Township 10 N, Range 1 E, Gila and Salt River Base and Meridian, YAVAPAI County, Arizona. Total claim acreage is 15 acres.
- The type of corner and location monuments used are as follows: capped PVC pipe
and steel posts
- The bearings and distances in degrees and feet between claim corners and to a public land survey monument are as depicted on the map.
- If the claim is a placer or millsite claim with exterior limits conforming to legal subdivisions of the public survey, provide a legal description of the claim 5 1/2, SW 1/4, SE 1/4, SE 1/4 of UNSURVEYED SECTION 12, AND NW 1/4, NE 1/4, NE 1/4 of UNSURVEYED SECTION 13; of T10N, R1E, G+SR B+M

Form MCF100a
Revised July 2014

Input Parameters for Geographic Report with Land

System Id = CR

Admin State = AZ

Geo State =

Casetype Begins With

Case Disp Txt = AUTHORIZED, CANCELLED, CLOSED, EXPIRED, PENDING, REJECTED, RELINQUISHED, VOID, WITHDRAWN

Mer Twp Rng =

Section =

Mtrs = 14 0100N 0010E 012, 14 0100N 0010E 013, 14 0100N 0010E 999, 14 0100N 0020E 018, 14 0100N 0020E 999

Commodity =

Commodity Txt =

Pending Org =

Pend Org Decode =

Total Rows Returned: 22

UNITED STATES DEPARTMENT OF INTERIOR
 BUREAU OF LAND MANAGEMENT
 GEOGRAPHIC REPORT WITH LAND
 Sorted by Serial Number

Adm State: AZ

Serial Number: AZA 002936
 Total Case Acres: 65,501.000

<u>Casetype</u>	<u>Case Disp</u>	14	0100N	0020E	<u>Sect</u>	<u>Sur Typ</u>	<u>Sur Num</u>	<u>Suff</u>	<u>Subdivision</u>	<u>Act Pend</u>
246100	AUTHORIZED				018	ALIQ			E2;	

Serial Number: AZA 022689
 Total Case Acres: 2,161.980

<u>Casetype</u>	<u>Case Disp</u>	14	0100N	0020E	<u>Sect</u>	<u>Sur Typ</u>	<u>Sur Num</u>	<u>Suff</u>	<u>Subdivision</u>	<u>Act Pend</u>
206400	AUTHORIZED				018	ALIQ			NESWNE, SESWSWNE, W2SESWNE;	
						ALIQ	1		W2NWSENE, SENWSENE;	
						ALIQ	2		NESWSENE, W2SESENE;	
						ALIQ	3		SESESENE, S2NESENESEW;	
						ALIQ	4		SENWSENESEW, E2SWSENESEW;	
						ALIQ	5		SESENESEW, E2W2SESW, E2SESW;	
						ALIQ	6		NENENESE, E2NWNWSE;	
						ALIQ	7		NESWNWSE, S2NWSWNWSE;	
						ALIQ	8		N2S2SWNWSE;	

Serial Number: AZA 022699PT
 Total Case Acres: 12,382.940

<u>Casetype</u>	<u>Case Disp</u>	14	0100N	0020E	<u>Sect</u>	<u>Sur Typ</u>	<u>Sur Num</u>	<u>Suff</u>	<u>Subdivision</u>	<u>Act Pend</u>
221006	AUTHORIZED				018	ALIQ			E2W2;	
						LOTS			1-8;	

Serial Number: AZA 026087
 Total Case Acres: 1.000

<u>Casetype</u>	<u>Case Disp</u>	14	0100N	0020E	<u>Sect</u>	<u>Sur Typ</u>	<u>Sur Num</u>	<u>Suff</u>	<u>Subdivision</u>	<u>Act Pend</u>
380913	CLOSED				018	ALIQ			W2;	

RUN TIME: 01:49 PM

UNITED STATES DEPARTMENT OF INTERIOR
BUREAU OF LAND MANAGEMENT
GEOGRAPHIC REPORT WITH LAND
Sorted by Serial Number

RUN DATE: 03/10/2016
Page 2 of 3

Adm State: AZ

Serial Number: AZA 028025
Total Case Acres: 1.000

<u>Casetype</u>	<u>Case Disp</u>	14	0100N	0020E	<u>Sect</u>	<u>Sur Typ</u>	<u>Sur Num</u>	<u>Suff</u>	<u>Subdivision</u>	<u>Act Pend</u>
380913	CLOSED				018	FF		1	PART OF;	

Serial Number: AZA 028587
Total Case Acres: 0.500

<u>Casetype</u>	<u>Case Disp</u>	14	0100N	0020E	<u>Sect</u>	<u>Sur Typ</u>	<u>Sur Num</u>	<u>Suff</u>	<u>Subdivision</u>	<u>Act Pend</u>
380913	CLOSED				018	ALIQ			E2;	

Serial Number: AZA 029771
Total Case Acres: 2.000

<u>Casetype</u>	<u>Case Disp</u>	14	0100N	0020E	<u>Sect</u>	<u>Sur Typ</u>	<u>Sur Num</u>	<u>Suff</u>	<u>Subdivision</u>	<u>Act Pend</u>
380913	CLOSED				018	ALIQ			NW;	

Serial Number: AZA 03102401
Total Case Acres: 112,637.000

<u>Casetype</u>	<u>Case Disp</u>	14	0100N	0020E	<u>Sect</u>	<u>Sur Typ</u>	<u>Sur Num</u>	<u>Suff</u>	<u>Subdivision</u>	<u>Act Pend</u>
231113	CLOSED				018	ALIQ LOTS			E2,E2W2; 1-8;	

Serial Number: AZA 033821
Total Case Acres: 1.000

<u>Casetype</u>	<u>Case Disp</u>	14	0100N	0020E	<u>Sect</u>	<u>Sur Typ</u>	<u>Sur Num</u>	<u>Suff</u>	<u>Subdivision</u>	<u>Act Pend</u>
293200	EXPIRED				018	FF			PORTION OF;	

RUN TIME: 01:49 PM

UNITED STATES DEPARTMENT OF INTERIOR
BUREAU OF LAND MANAGEMENT
GEOGRAPHIC REPORT WITH LAND
Sorted by Serial Number

RUN DATE: 03/10/2016
Page 3 of 3

Adm State: AZ

Serial Number: AZA 036649
Total Case Acres: 4.000

<u>Casetype</u>	<u>Case Disp</u>				<u>Sect</u>	<u>Sur Typ</u>	<u>Sur Num</u>	<u>Suff</u>	<u>Subdivision</u>	<u>Act Pend</u>
380913	CLOSED	14	0100N	0020E	018	ALIQ			NE;	

Serial Number: AZA 036655
Total Case Acres: 1.000

<u>Casetype</u>	<u>Case Disp</u>				<u>Sect</u>	<u>Sur Typ</u>	<u>Sur Num</u>	<u>Suff</u>	<u>Subdivision</u>	<u>Act Pend</u>
371511	CLOSED	14	0100N	0020E	018	ALIQ			NE;	

Serial Number: AZA 036786
Total Case Acres: 1.000

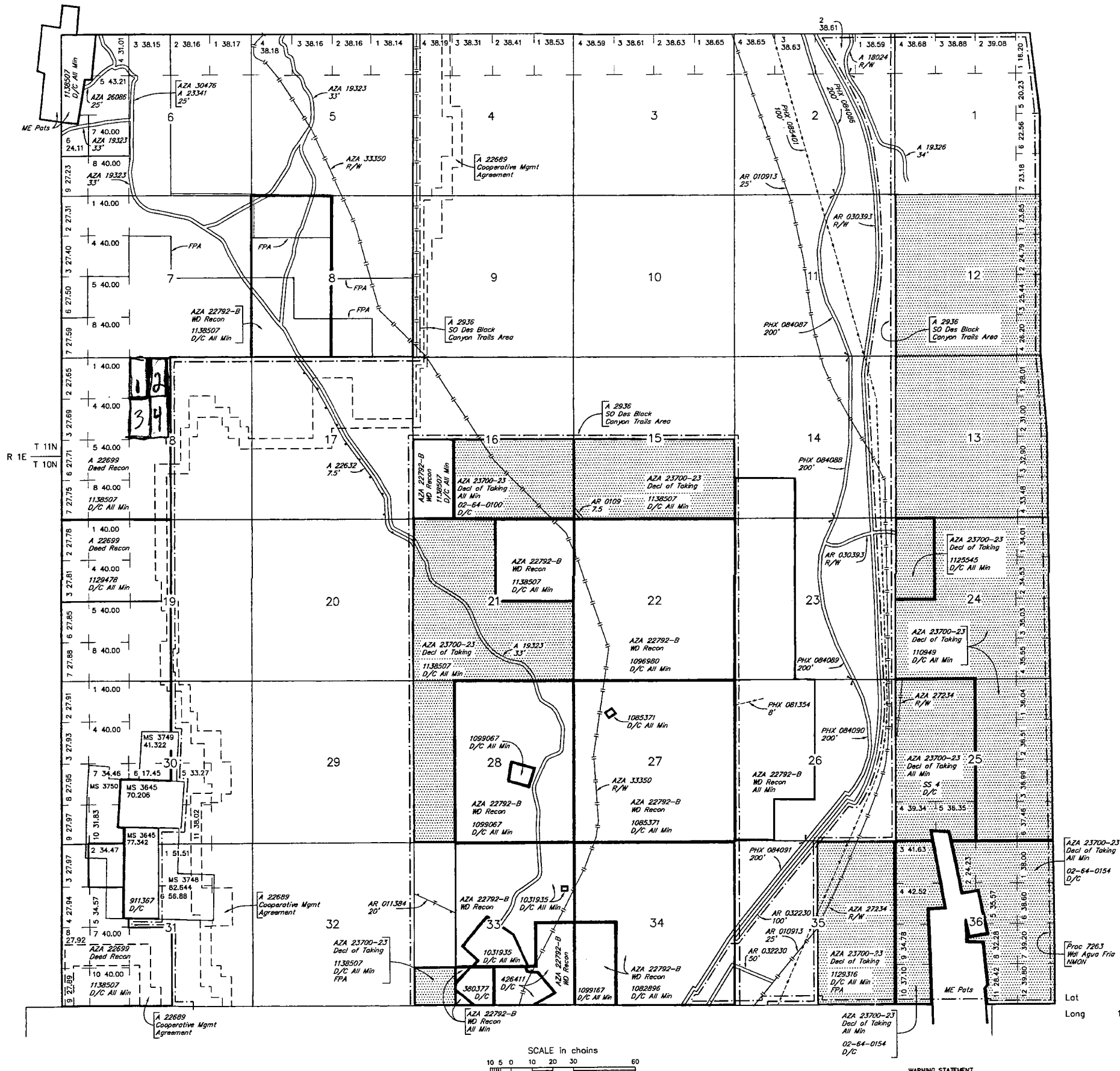
<u>Casetype</u>	<u>Case Disp</u>				<u>Sect</u>	<u>Sur Typ</u>	<u>Sur Num</u>	<u>Suff</u>	<u>Subdivision</u>	<u>Act Pend</u>
371511	PENDING	14	0100N	0020E	018	FF			NESW(PART);	

TOWNSHIP 10 NORTH RANGE 2 EAST OF THE GILA AND SALT RIVER MERIDIAN, ARIZONA

YAVAPAI COUNTY
HASSAYAMPA FIELD OFFICE

STATUS OF PUBLIC DOMAIN
LAND AND MINERAL TITLES
AND ACQUIRED LANDS

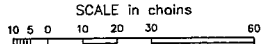
INDEX TO SEGREGATED TRACTS				
RESURVEY TRACT NO	ORIGINAL SURVEY			
	T	R	SEC	SUBDIVISION



FOR ORDERS AFFECTING DISPOSAL OR USE OF UNIDENTIFIED LANDS WITHDRAWN FOR CLASSIFICATION, MINERALS, WATER AND/OR OTHER PUBLIC PURPOSES, REFER TO INDEX OF MISCELLANEOUS DOCUMENTS.

- MDS 40 NW
 - 41 NW
 - 43 SE
 - 42 SW
-
- A 9270 PL 359 Secs 6 & 7
-
- A 22632 R/W 7.5'
Sec 5 : Lots 3, 4, SE1/4NW1/4, E1/2SW1/4 M&B
-
- AMC 314184, 314185 & 314187 PL 359 Sec 6
-
- AMC 314637 – AMC 314640 PL 359 Secs 7, 18
-
- AZA 27235 R/W
Sec 24 : W1/2W1/2NW1/4NW1/4
-
- AZA 27224 R/W
Sec 33 : SW1/4SW1/4
-
- AZA 27241 R/W
Sec 16 : SE1/4
-
- AZA 27212 R/W
Sec 35 : NW1/4NE1/4
-
- AZA 27211 R/W
Sec 35 : NW1/4NE1/4
-
- AZA 23641 R/W
Sec 5 : W1/2
Sec 17 : SW1/4NE1/4, E1/2NW1/4, SE1/4
Sec 20 : NE1/4NE1/4

Lot 3411'50"N
Long 112'05'20"W



CURRENT TO	GS	T	10 N
12-12-2008	PV	R	2 E

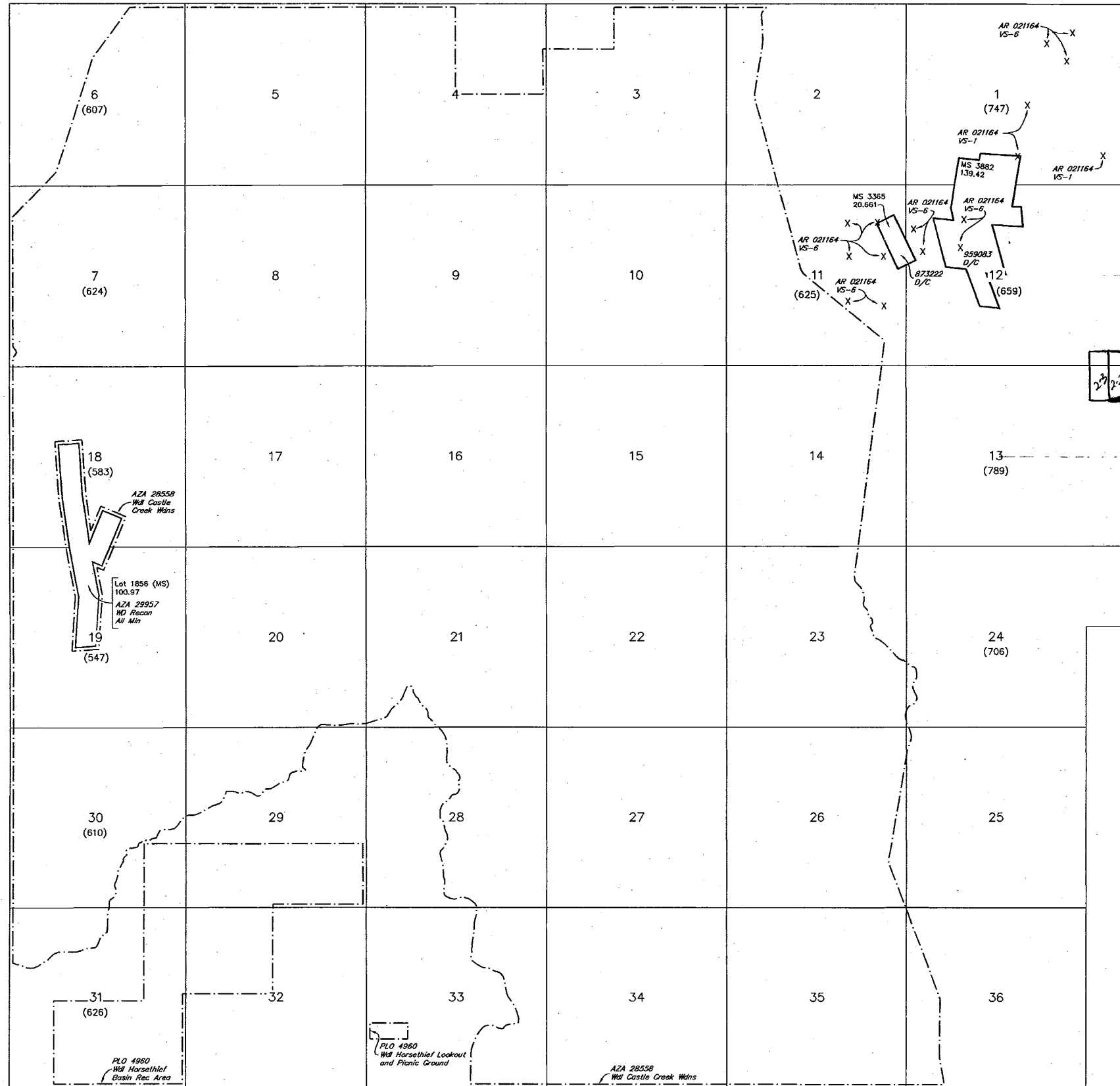
WARNING STATEMENT
This plot is the Bureau's Record of Title, and should be used only as a graphic display of the township survey data. Records hereon do not reflect title changes which may have been effected by lateral movements of rivers or other bodies of water. Refer to the cadastral surveys for official survey information.

UNSURVEYED TOWNSHIP 10 NORTH RANGE 1 EAST OF THE GILA AND SALT RIVER MERIDIAN, ARIZONA

PROTRACTION DIAGRAM NO 16 OFFICIALLY FILED 12/7/1959

YAVAPAI COUNTY
HASSAYAMPA FIELD OFFICE

STATUS OF PUBLIC DOMAIN
LAND AND MINERAL TITLES



INDEX TO SEGREGATED TRACTS				
RESURVEY	ORIGINAL SURVEY			
TRACT NO	T	R	SEC	SUBDIVISION

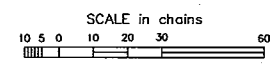
FOR ORDERS AFFECTING DISPOSAL OR USE OF UNIDENTIFIED LANDS WITHDRAWN FOR CLASSIFICATION, MINERALS, WATER AND/OR OTHER PUBLIC PURPOSES, REFER TO INDEX OF MISCELLANEOUS DOCUMENTS.

MDS 6 NE
7 NW
8 SW

All Tp included in Will Prescott NF Proc 6 12/21/1899

All Tp included in Determination Area PL 167 AR 021164 7/9/1959

T 10N
T 9 1/2N R 2E



WARNING STATEMENT
 This plot is the Bureau's Record of Title, and should be used only as a graphic display of the township survey data. Records hereon do not reflect title changes which may have been effected by lateral movements of rivers or other bodies of water. Refer to the cadastral surveys for official survey information.

CURRENT TO	DSB	GSR Mer
8-5-2010	ACAD	T 10 N
		R 1 E